



the wily network
Rely on the strength of your pack

2022 ANNUAL REPORT

WHAT WILY MEANS TO ME

COMMUNITY VOICES

Inside

Dear Wily Pack	1	Growing our Program	14
Why Wily	3	Partner Voices	17
The Journey Continues	5	Scholar Voices	18
Alum Voices	7	Fund-A-Scholar	20
New Beginnings	8	The Wily Footprint	21
Our Sponsors	9	At a Glance	22
Ilene Beal Speaker Series	11	Appreciating Generosity	25
Community Voices	13	Join our Pack	32

Our Mission

Wily Scholars bring unique experiences, challenges, strengths and goals to the college journey. Some have experienced homelessness or foster care, some have been denied family support due to their sexual orientation or gender identity, some have lost their parents, and some have family members dealing with addiction, mental illness or incarceration. All are talented and motivated—and all are braving college on their own.

The Wily Network provides a critical safety net for Scholars as they navigate college independently. The Wily program offers weekly clinical coaching, financial assistance, community-building support, and networking opportunities to help them move from surviving to thriving.

Wily works to ensure Scholars have the tools and networks necessary to thrive in four-year residential colleges and transition successfully into post-college life.

Our Core Values



Wily Scholars are the heart of our mission

We shape every decision we make around how best to partner with Scholars during their college journeys. Scholars' voices are a critical component of our decision-making process. We reflect on how each of our individual perspectives and identities influences our work with Scholars.



We believe in the power of deep, trusting relationships

Wily is a reliable presence in Scholars' lives. We join Scholars in building reciprocal and transformational relationships. We are intentional about creating a space where all members of the Wily community can share their authentic selves and feel a true sense of belonging.



We believe in the strength of our pack

Together, Wily Scholars form a pack that supports and celebrates one another. We work collaboratively with colleges, local nonprofits, and a dedicated base of volunteers to build a community of support for Scholars.



We are committed to the long term

As an organization and in our individual relationships with Scholars, we only make commitments we can keep. We are there for Scholars through college and beyond. Wily alums remain an integral part of our pack.



We are a listening/learning organization committed to diversity, equity, inclusion and belonging

We make decisions with intention. We continually evaluate our program and are adaptable to meet our staff and Scholar needs. The Wily Pack is made up of unique identities, backgrounds and perspectives, and we strive to honor each individual's lived experiences.

2022 Staff

- Laura Broffman *(she/her)*
Operations Manager
- Kat Castañeda, LICSW *(she/her)*
Director of Clinical Coaching
- Korie Clegg, MSW *(she/her)*
Clinical Scholar Coach
- Sophie Cohen *(she/her)*
Marketing & Communications Coordinator
- Krisbelle Cosme *(she/her)*
Administrative Coordinator
- Beth Franklin *(she/her)*
Program Assistant
- Susan Goldscheid, MAT *(she/her)*
Clinical Scholar Coach
- Alex Hendricks *(she/her)*
Program and Volunteer Coordinator
- Michael Holliday, MEd *(he/him)*
Major Gifts Manager
- Judi Alperin King, PhD *(she/her)*
Founder and Executive Director
- Ashley Linell *(she/her)*
Director of Development & Communications
- Madjeen Lorthe, MEd *(she/her)*
Clinical Scholar Coach
- Jai Madden, MSW *(he/him)*
Clinical Scholar Coach
- Nathalia Mahabir, LCSW *(she/they)*
Clinical Scholar Coach
- Zubin Mistri, MDiv *(he/him)*
Clinical Scholar Coach
- Emma Chavenson Munsch *(she/her)*
Financial Aid Coach
- Ine Ogagan, MS, LCSW *(she/her)*
Director of Clinical Coaching
- Bonnie Yezukevich, LICSW *(she/her)*
Director of Programming

Dear Wily Pack,

By the time they meet us, Wily Scholars have already blazed the trail to college and are forging their path to graduation.

I think of our role as the “assist.” Our support is important—sometimes critical—in helping Scholars manage obstacles that they have no control over. At the same time, we don’t speak for them or tell them what they need. We **follow their leads**. We **speak alongside them** when their voices aren’t being heard, and we **stand behind them** when they want to take the mic.

I am so thankful for this community, which is essential to our ability to partner with Wily Scholars throughout their journeys. Because of your support, our coaches are there for Scholars every day to problem solve around challenges and celebrate successes.

I hope you will connect with the voices in this report, and use your own voice to serve as an ambassador for Wily.

With gratitude,

Judi



Wily's staff gathers at Fall Community Day. Not pictured: Laura Broffman, Kat Castañeda, Korie Clegg, Beth Franklin, Ine Ogagan.

2022 Staff Changes

In 2022, we said goodbye to Wily's founding Director of Clinical Coaching, **Kat**, and our Program Assistant, **Beth**, and welcomed three new members to our pack: **Ine**, **Jai** and **Krisbelle**.

Acknowledgements

Design: Amy Collier
Proofreaders: Kathy Alperin and Katherine DePasquale



Leadership

2023 Board of Directors

- Don Bramley (he/him)

Katie Bramley (she/her)

Chair
- Nevin Chitkara (he/him)

Mark DiVincenzo (he/him)

Tara Hendricks (she/her)

Allison Hirsch (she/her)

Treasurer
- Michael Julian (he/him)

Clerk
- Ryan Kim (he/him)

Judi Alperin King (she/her)

Cindy Lawry (she/her)

Zach Martin (he/him)

Alain Mathieu (he/him)

Sara Miller Blanc (she/her)

Michele Norman (she/her)

Osamagbe Osagie (she/her)

Sharisse Cail Perry (she/her)

Andrew Rudzinski (he/him)

- Scott Steele (he/him)

Shalona Williams (she/her)

Scholar Representative
- Ajani Wilson (he/him)

Scholar Representative
- Heidi Ziobro (she/her)

Babson Board Fellow



From left: Bilal, Victor, Shalona and Ed

Advisory Council

- Bryan Allard (he/him)

Donna Bonaparte (she/her)

Kelly Glew (she/her)

Jeff Kline (he/him)

Margaret Lewis (she/her)

Meredith Mendelson (she/her)

Annie Montesano (she/her)

Sheila Murphy (she/her)
- Steve Pemberton (he/him)

Kathryn Sargent (she/her)

Kristina Gulick Schaefer (she/her)

Jennifer Schoen (she/her)

Carolyn Shaughnessy (she/her)

Edward Walker (he/him)

Leann Walsh (she/her)

Honorary Board

- Ed Hajim (he/him)

Kim Pappas (she/her)

Judi Rosensweig (she/her)

David Spina (he/him)

Stevie Spina (she/her)

Robin Wolpow (she/her)

2022 Young Professionals Association

- Julien Barthelemy (he/him)

Membership Committee

Co-chair
- Laura Broffman (she/her)

Staff Representative
- James Carroll (he/him)

Co-chair
- Austin Crouse (he/him)

Membership Committee

Co-chair
- Carly Euler (she/her)

Co-chair
- Natalie Krause (she/her)

Advancement Committee

Chair
- Sara Miller Blanc (she/her)

Board Representative
- Leo Young (he/him)

Career Connections

Committee Chair



Wily's 2022 board. Not pictured: Allison Hirsch, Zach Martin, Kim Pappas, Jennifer Schoen, Heidi Ziobro.

Thank you to 2022 retiring board members **Kim Pappas** and **Jennifer Schoen**

Kim



Jennifer



Why Wily

Why Wily? That's the question Board Chair **Katie Bramley** asked at the 7th Annual Meeting of the Board on April 25th. At the meeting, moderated by Advisory Council member **Ed Walker**, Scholar panelists **Bilal**, **Shalona** and **Victor** offered a variety of powerful answers to that question.

Why Wily? The Scholars.

"The greatest resource in Wily is the Scholars themselves. We utilize that. Knowing that you're not alone is a very powerful thing in life."

Victor (he/him)
Boston University '22

Why Wily? The Coaches.

"[My coach] being there for me has made it possible for me to cross this bridge and to think about my future."

Bilal (he/him)
Boston College '22

Why Wily? The Pack.

"I do really well in environments where a group or community can inspire you and help you recognize your potential. Once you find that, nothing else can tear you down."

Shalona (she/her)
Northeastern University '22

Daniel E. Offutt III ENDOWMENT FUND

We had the opportunity to hear from **Dick Orenstein**, the trustee of **the Daniel E. Offutt III Charitable Trust**. The trust has established an endowment fund for Wily with a generous gift of \$750,000. As the fund grows, so will the sustainability of our organization—and the stability we can offer Scholars.

Wily Champion Award

The Wily Champion Award was presented to **Taylor Capuano** and **Mike Virginio**, founders of Wily's Young Professionals Association (YPA). They had a vision for a group of driven young professionals who would work to amplify Wily's message, and in a short amount of time they transformed that vision into a reality.



YPA members attend the Annual Meeting in support of Taylor and Mike, who spoke virtually.

The Journey Continues

In 2022, we celebrated the graduations of **15 Wily Scholars**! We also reunited with Wily alums from the classes of 2021 and 2020 who came back to their alma maters for in-person ceremonies. We are always thrilled to cheer Scholars on as they walk across that stage.

And **the journey doesn't end there**. Wily continues to work with Scholar alums for **three months** after they graduate. During that time, coaches partner with alums on setting up their apartments, adapting to their new work environments and embracing their new communities. Coaches also work with recent grads to find new resources and supports to lean on in this next phase of life.

We love staying in touch with Wily alums! Our growing alumni network is more than **50** strong.

The Wily class of 2022 graduated from:

- Boston College
- Boston University
- Harvard University
- Massachusetts Institute of Technology
- Middlebury College
- Northeastern University



Boston College graduates celebrate together.



A 2020 graduate and his coach reunite for his make-up ceremony.



A graduate hugs her coach.

Along with attending graduation ceremonies, we celebrated Wily's graduating seniors at our annual grad dinner. We welcomed back our alum speaker, **Taylor** (she/her), who shared the lessons she learned throughout college about asking for and receiving help. We also heard from **Nicole Stewart** (she/her), executive director of Boston CASA, about her own story and her journey through college and beyond.



Saying Goodbye

In November of 2016, **Kat Castañeda** took a chance on an early-stage startup and joined Wily as our first Director of Clinical Coaching. From day one, Kat led the charge to plan the program, welcome the first Wily Scholars, and adapt the Fostering Success Coaching Model to our community-based organization. After almost six years, Kat has now moved on to a career in consultation and coach training. Her lasting impact on Wily continues to be felt.



December 2022 graduates pose with their coaches at their graduation dinner.



Kat celebrates with one of Wily's first graduates in 2019.



The class of 2022 celebrates with their coaches at Wily's spring graduation ceremony.

Alum Voices

Eric James

When Wily met Eric James (he/him), he hadn't yet enrolled at UMass Dartmouth, and we were yet to partner with our first college student. Now, seven years and more than 100 Scholars later, we sat down with Eric to talk about his new role as Mattapan's Neighborhood Liaison to City Hall.



Eric poses with coaches Ana (left) and Judi (right) at Wily's 2019 Community Day.

How are you liking the new position?

It's a lot to take in, but I'm enjoying it! This job brings me into contact with so many different people from all different walks of life. I definitely like being out in the community and working with people in a way that actually helps them.

Do you feel like Wily helped you along the way to finding this role?

You know, when I first met Wily, I was 19 and homeless. I knew that I wanted to become an attorney, and I knew that I liked to advocate for the people around me. But I had no tangible way to get there.

The mindset I was in at that time was all survival-based. It was all just, I need to make money. I need to make enough money to get somewhere to live. But Wily gave me the security to know that I could do something more besides trying to figure out how to survive every day.



Advisory Council member Sheila Murphy poses for a photo with Eric after he is introduced to the community by Boston Mayor Michelle Wu.



Eric speaks with a current Wily Scholar about career options at Wily's 2022 Career Fair.

Did your experience with Wily influence the way you approach this position?

Definitely, just in the sense of being able to lead with confidence.

As Mattapan Liaison, I go between two entities: people who want something—like more speed bumps, or funding for a block party—and the city officials that have the means to access it.

But they have to split resources between the rest of the city. So a big part of the job is having the confidence to go into a situation and say, "Listen, I understand that there's only so much you can do. But here's how this will benefit the community."

Especially because I'm very new at the job, to have the confidence to go in like that? I love the fact that I got to witness that firsthand through so many people at the Wily Network who taught me how to advocate with confidence.

New Beginnings

Prior to moving into our first office in **Rockland Trust Bank** in 2018, a team of five worked out of Judi's living room. Needless to say, Rockland Trust's donation of office space was a game-changer for Wily. Over the last five years, the bank provided us with consistent space for meetings, storage and collaboration: a stable foundation for our program to expand. **We are so thankful** for Rockland Trust's generous investment in our growth.

The fact that we have now outgrown Rockland Trust's office marks a bittersweet accomplishment. Though we were sad to leave our space in West Roxbury at the end of 2022, we are excited to announce that we have moved to a new office large enough to accommodate our growing staff of **16**.



Thank you to **Robin** and **Marc Wolpow** for funding the buildout of our new office in Newton. They provided a beautiful, spacious environment for our growing staff.



Wily's 2018 team holds their first meeting in the Rockland Trust office space.



Exactly five years and one day from our move in, volunteers from Audax Group help us pack up in preparation for our move out.



For the first time, we are able to host events in our own space! Volunteers from the National Charity League wrap holiday gifts for Scholars in our new office.

Sept. 2018

Sept. 2022

Dec. 2022

Sept. 2019

Oct. 2022



Our growing staff thrives at Rockland Trust.



Staff starts unpacking boxes in our new office space in Newton.

Our Sponsors

Sponsorships and grants from corporations and foundations are critical in helping Wily fulfill our mission. We are so grateful to the sponsors who supported Wily in 2022.

Graduate Sponsors (\$100,000+)

Ilene Beal Charitable Foundation
Daniel E. Offutt III Charitable Trust

Senior Sponsors (\$50,000+)

Lloyd G. Balfour Foundation
J.E. & Z.B. Butler Foundation
The Charles Hayden Foundation
Carole Remick Charitable Foundation

Thompson Family Foundation
Wellington Management Foundation

Junior Sponsors (\$25,000+)

Cummings Foundation
DCU For Kids
Further Forward Foundation
Income Research + Management

Liberty Mutual
Life Science Cares
Moderna Charitable Foundation
The 'Quin House



Supporter Heidi Heinlein and Board Chair Katie Bramley celebrate receiving some extra funding from our sponsor, Cummings Foundation.

Sophomore Sponsors (\$10,000+)

John W. Alden Trust
Audax Charitable Foundation
Bain Capital Children's Charity
Cabot Family Charitable Trust

Pegasystems Inc.
Anna B. Stearns Charitable Foundation
Westfield Capital Management

Freshman Sponsors (\$5,000+)

Paul and Edith Babson Foundation
Brookline Bank
Jason Hayes Foundation

Philanthropy Massachusetts
St. Andrew's Episcopal Church
Sunovion Pharmaceuticals, Inc.



To learn more about our corporate sponsorship opportunities, please reach out to Major Gifts Manager **Michael Holliday** at mike@thewilynnetwork.org or (617) 869-8340.

THE WILY NETWORK PRESENTS

The Ilene Beal Speaker Series

The Journey Starts Here:
Using college experience to build career success

At the Ilene Beal Speaker Series, we gained insight into how college students can prepare for their careers from three panelists representing a wide range of perspectives and professional experiences.

Panelists

Paul Alexander (he/him)
Chief Marketing and Communications
Officer for the Questrom School of Business
at Boston University

Joe Du Pont (he/him)
Associate Vice President of Career Services
at Boston College

Vaneshia Reed (she/her)
Strategy Consultant and Chef



From left: panelists Joe Du Pont, Vaneshia Reed and Paul Alexander, and moderator Treasure

“ Wily has created an intimate community armed with material resources that ensure we not only beat the odds, but create new ones that challenge the rest of society to be even greater.

Treasure (she/they), Harvard University '22

THE ILENE BEAL CHARITABLE FOUNDATION

While we were never fortunate enough to meet Ilene Beal, we are inspired by the deep impact she made as a mentor to young women starting out their professional lives. Thank you to The Ilene Beal Charitable Foundation for sponsoring the **Ilene Beal Speaker Series**.



An incredible team of volunteer networkers shared their experience and advice as young professionals with guests. They even made some connections for the college students in attendance!

Thank you!

Thank you to **Julie Beckham** for providing public speaking coaching for Wily Scholar Award winners!

Thank you so much to event co-chairs **Annie Montesano** and **Hilary Steinert** for all their hard work! From selecting topics, to researching and securing speakers, to developing content for the program, Annie and Hilary's leadership has been instrumental in the success of the Speaker Series every year.

Thank you to **Kabrina Chang** for connecting us with our host, Boston University.

“ The Wily Network has helped me become the young woman I am today. Being a part of this organization has allowed me to focus on personal growth and build a future for myself that, freshman year, I couldn't imagine living.

Marissa (she/her), Boston College '22



Marissa was presented with the 2022 Wily Scholar Award, given annually to a student who has made a significant impact on our program.

Community Voices



A Scholar hugs her coach, Bonnie, at Fall Community Day.

Coaching

“ It’s a good feeling to know there’s someone who really cares and is there to support you, even if they just got to know you.

Ashia (she/they) | Middlebury College ‘27

Community Day

“ One of my biggest struggles last semester was finding ‘my place’ at college. Wily for me was my place. It’s a place where I feel embraced, accepted, cared for, important, seen and appreciated.

Nicole (she/her) | Northeastern ‘25



Scholars spend some time together at Spring Community Day.



Two Scholars enjoy Wily’s “Packsgiving” meal the week before Thanksgiving.

Packsgiving

“ When I think ‘Wily,’ I think of a warm Thanksgiving dinner.

Taylor (she/her) | Wily Alum



A Wily alum (right), who attended the 2021 Career Fair as a student, returns in 2022 as a recruiter and chats with current Wily Scholars.

Career Fair

“ In terms of Wily supporting my career, it’s been one of the most useful things I’ve gotten from the program.

David (he/they) | MIT ‘23

Gift Giving

“ When I joined Wily, someone told me to send my wishlist for birthday gifts. And I was like, what kind of scam is this? But I made a list of things I wanted. And then I got them. And it was really surreal. I felt cared for...I felt like someone was looking out for me.

Mathieu (he/him) | Wily Alum



A Scholar enjoys a drum set from her gift giver.



A Scholar opens a care package.

Care Packages

“ When I got care packages, it would make me tear up a little bit. They helped get me through school.

Jordan (he/him) | Wily Alum

Growing our Program

2021-2022 Initiatives

In 2021, the Wily Network adopted three initiatives to continue to build on our foundation, expand our network, and improve our programming. Now, we're looking back on what we accomplished to date as part of each ongoing initiative: **Expansion**, **Mental Well-Being**, and **Career Preparation**.

Where We Started



Expansion

When campuses started closing in March of 2020, we started receiving more referrals than ever before. We realized that we didn't just want to grow: we **needed to grow**, in order to keep up with the demand from students in the greater Boston area.

So, we set a goal: to expand by 15 Scholars a year, until we reach 210 Scholars in 2029.



Two new Scholars meet an alum from their school at Fall Community Day.



Mental Well-Being

Many young adults deal with significant mental health challenges during college. As a result, colleges offer the option of taking a **medical leave of absence** to pursue treatment for a semester. But without a stable home to return to, or the ability to pay for expenses, going on medical leave is rarely a realistic option for Scholars.

We set two goals to support Wily Scholars' mental well-being: to create a fund to pay for therapy, and to step up our support for students who are taking a medical leave.



A Scholar works on a collaborative Wily art project at Fall Community Day.



Career Preparation

When the pandemic hit, we knew college seniors would be graduating into a tough job market. On top of that, Wily Scholars deal with another obstacle: the "network gap," or the advantage some individuals have in their careers simply because of who they know.

We decided to launch a **career fair** to help Wily Scholars make professional connections, build confidence, and practice their interviewing skills.



A Scholar speaks with representatives from EF Education First at the Career Fair.



A Scholar chats with representatives from First Republic Bank at the Career Fair.



If there's something that you think might fall through the cracks, Wily will help you catch it.

Mathieu (he/him), Wily Alum



Thank you to Wily's 2022 Career Fair attendees

Companies

Asymchem Group
Audax Group
CarGurus
City of Boston Office of
Neighborhood Services
CMBG3 Law
EF Education First
First Republic Bank
Hencove
InsideTracker
Leadership Brainery, Inc.
MA Commission on
LGBTQ+ Youth
Museum of Science
National Amusements
Neighborhood House
Charter School
Pegasystems Inc.
Reliable Respiratory
Safety Partners, Inc.
Trivium Interactive
We Got Us: A Community
Empowerment Project
Wellington Management

Career Guides

Jean Dolin (he/they)
Rainbow Tales
Jessie Laurore (she/her)
Neighborhood Birth Center
Jessica McNeill,
Harvard Business School
Brianna Miers (she/her)
KIND Marketing &
Communications

We'd like to say a special "thank you" to the following:

Simmons University
for hosting us

Volunteer Mary
Beth Lisman
for working with all the
companies

Volunteers Francey
Fenton, Becky King and
Beth Franklin
for serving as hosts
and connectors

Below: The Wily Pack gathers at Fall Community Day.

Growing our Program

Where We Are



Expansion

We started the year with **65** Scholars. Over the course of 2022, we worked with a total of **91**. We welcomed **30** new Scholars and celebrated **18** graduations, bringing our community of alums to **51**.

We had been looking for the right person to lead our team through this period of growth as Director of Clinical Coaching, and **Ine Ogagan, MS, LCSW** was the perfect fit. We welcomed Ine in December 2022.



Ine (center) joins some Scholars for lunch.



Mental Well-Being

We partnered with board member **Cindy Lawry** and students at Boston University's School of Public Health Practicum Program to research the landscape of college mental health medical leaves nationwide. By the end of 2021, we had developed a "first of its kind" medical leave support program for Wily Scholars.

Wily's medical leave program keeps students connected with coaching and Wily community events, while helping fund their therapy, housing and food.



A Scholar sports a hoodie with our motto: rely on the strength of your pack.

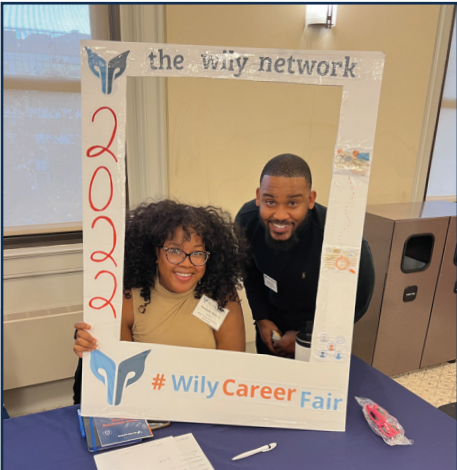


Career Preparation

We held Wily's first Career Fair in October 2021 with 18 companies.

In 2022, we honed the **Career Fair** program based on student feedback. We brought in recruiters from a wider variety of fields, and who better reflected the diversity of the greater Boston area.

Scholars networked with representatives from **24 companies**—including two Wily alums, who returned to speak with Scholars about their careers!



A Wily Young Professionals Association member (left) and our Manager of Major Gifts (right) work with Scholars on their resumes at the Career Fair.

Partner Voices

When **Jeff Taylor** heard Wily's story, he was inspired to share it with others. He brought our message to his coworkers at **Pegasystems Inc.** and from there, an incredible partnership began to grow.

Time and time again, the folks at Pega stepped up to offer their support in creative and impactful ways. When they heard we were looking to move, **Dan Ryan** and **Stephen Ferrick** helped us secure a new office space, consulted on the design and arranged for Pega to furnish it. When our Executive Director had questions about human resources or helping new hires relocate, Jeff Taylor and **Dianne Couto Foutz** volunteered their time and expertise. When we were working on growing our career preparation programming, **Jason Wilhelm** brainstormed with us and hosted a Pega University workshop for Wily Scholars.

We are so grateful to the entire team at Pega for their commitment to Wily.



Pega representatives chat with a student about career opportunities at Wily's 2022 Career Fair.

“ I help where I can because I believe in Wily's story and see their positive impact. I knew others would too; I knew they were passionate and generous people, for whom a story like Wily's would resonate.

Jeff Taylor (he/him)
SVP, Chief Strategy and Growth Officer

“ When Jeff introduced us to Wily, we wanted to help. And we brought others along to support this wonderful organization. Partnerships like these happen because of people who hear Wily's story and share it with anyone who will listen.

Dan Ryan (he/him)
Vice President of Real Estate and Facilities

“ We are proud that our team members have been able to support and engage with the Wily Network in so many meaningful ways. We were thrilled to contribute to Wily's move with a donation of furniture!

Stephen Ferrick (he/him)
Facilities Manager

Scholar Voices

Our blog highlights the voices of Wily Scholars and alums. Scan the QR codes to read Scholars' reflections on home and family history, the books that have changed the way they think, their study abroad experiences, and more!



What Wily Means to Me

"It is extremely important to understand the perspective of a Wily Scholar. We are individuals who have had to focus on fighting for housing, family or finances, while others got to focus on being a kid. We are individuals who all have the goal to make a better life for ourselves, but do not have the means to do it on our own."

By J'Saun (he/him) | Wily Alum



Study Abroad in Accra, Ghana

"Though I'm a first-generation Nigerian, this was my first time on the continent and my first time being outside of the United States for a substantial amount of time....I hadn't ever been in an environment where the general majority of the population was Black....It was a precious feeling of belonging that I wish every Black person could experience."

By Moonlight (they/them) | Harvard University '22



Home

"The main reason why she hasn't visited is bus tickets are \$60 one way, but she also hasn't visited because I haven't invited her.... I spent my whole life escaping her only to find that I miss her."

By Regina (she/her) | Middlebury College '22



Gift Guilt

"I actively try to avoid gifts, they often carry with them a lingering feeling of guilt....Each year my grandma says almost the same line, 'I wish we could've done more.' I used to agree with that."

By Gar (he/him) | Middlebury College '22



Two new Scholars meet a Wily alum for a picnic



Art by Alexis

At Wily, we rely on the strength of our pack. Wily Scholar Alexis created some beautiful artwork for us depicting what that might look like with different types of packs!



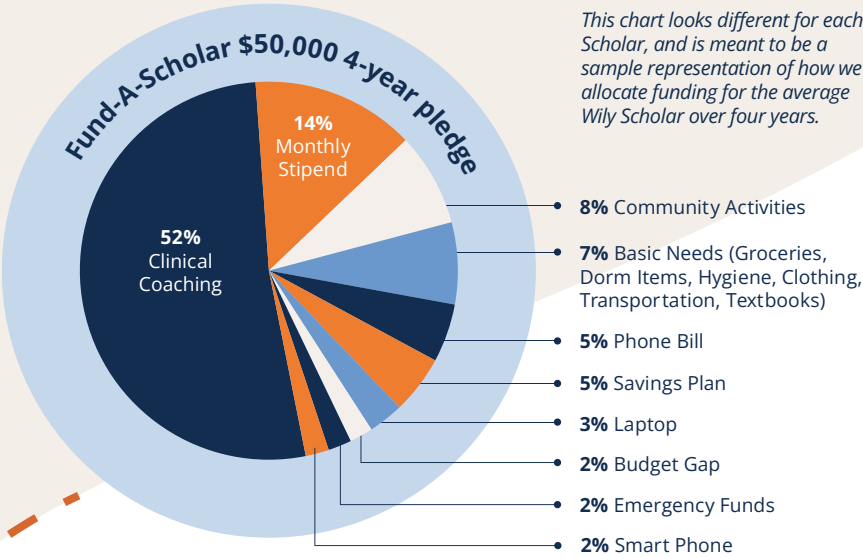
“Wily's icon is a wolf, and it really does feel like a wolf pack. You feel looked after, like you're a part of a community where you're going to be taken care of. You're going to be supported. No one is left behind.

Davae (she/her), Wily Alum

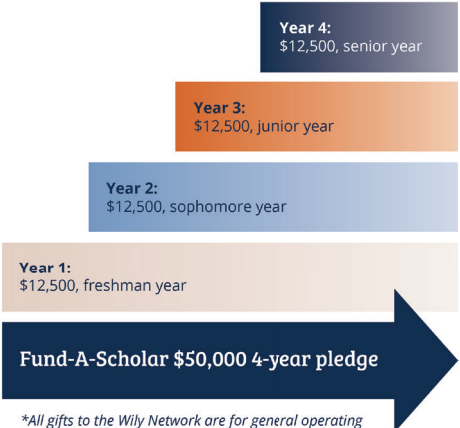
Fund-A-Scholar

Fund-A-Scholar Program donors make **a long-term** commitment to the Wily Network to ensure we can work with Scholars throughout their college journey. These **high-impact** gifts can be made in a single contribution or with a multi-year pledge.

If you have supported the Fund-A-Scholar program in previous years, **thank you!** **Because of you**, we are able to meet the needs of Scholars today—and prepare to welcome new Scholars in the years ahead. You inspire other individuals, families, businesses and grant-makers to join you in building a vibrant Wily community. Most importantly, you let Wily Scholars know that you have their back.



This chart looks different for each Scholar, and is meant to be a sample representation of how we allocate funding for the average Wily Scholar over four years.



“Wily is an awesome program that before you find it, you cannot imagine that it exists. This is a program that has changed my life.

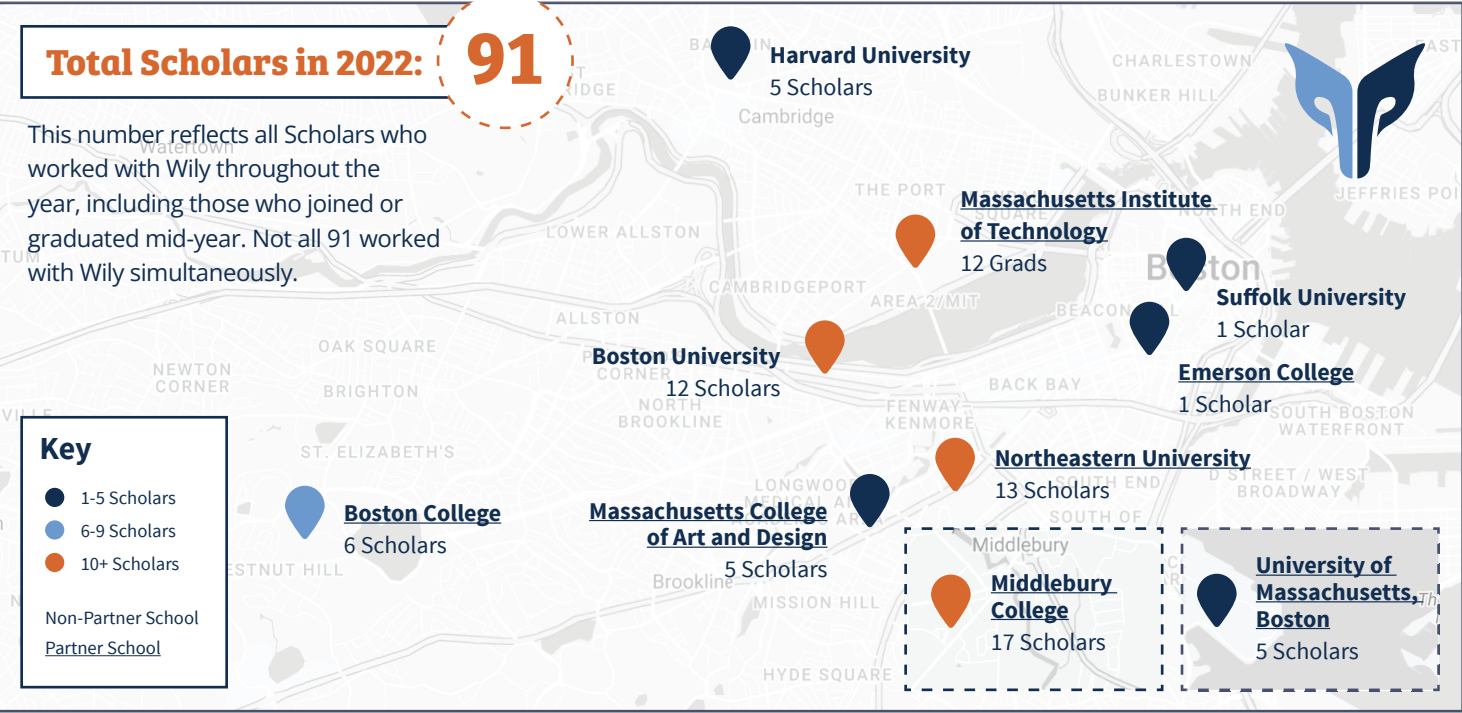
Sonam (he/him),
Wily Alum

Thank you to Wily’s Fund-A-Scholar donors!

Collectively, in 2022, you funded the cost of our program for 65 Scholars. We hope you are proud of all that you have made possible!

- Patty and Mel Alperin*
- Katie and Don Bramley*
- Adrienne and Michael Canning
- Carole Remick Charitable Foundation
- Nevin and Kristine Chitkara*
- Jen and Mark Cordes
- Helena D’Angelo*
- Lynne and Joe Delaney
- Katherine DePasquale and Rodolfo Chaparro
- Cindy and Jim Duffy
- Further Forward Foundation*
- Liz and Art Greenwood
- Linda and Mark Griffin
- Ed and Barbara Hajim
- Anne and Mark Kelley*
- Cynthia and Seth Lawry
- Renee Levin and Larry Jacobson*
- Zach and Laurel Martin*
- Kristin and Stephen Mugford
- Brooke and Will Muggia
- Michele Norman and Steve Loose*
- Daniel E. Offutt III Charitable Trust
- Kim and Greg Pappas*
- Susan and Chris Pappas
- Kathy and Bill Parent*
- Susan Patkin
- Dianne Pink and J. Roy Pottle
- Susan and Stu Porter
- Gail and Jim Radley*
- Judi and Bill Rosensweig*
- Barbara and Arthur Simons*
- Michael Simons*
- Stevie and David Spina*
- St. Jean Family
- Scott and Ursula Steele
- Hilary and Langley Steinert*
- Westfield Capital Management
- Robin and Marc Wolpow*
- Debbi and Michael Young*

*Five years of consecutive giving



At a Glance

Fiscal Year 2022 Financials

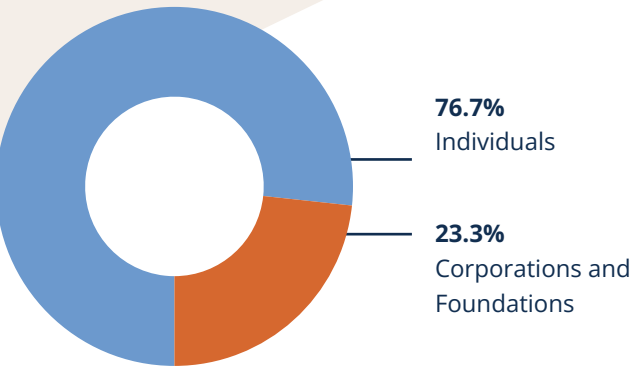
At Wily, we're almost always in a time of transition. As we help new alums move into their next phase post-graduation, we're also already beginning the process of onboarding a flow of new Scholars that will continue to grow throughout the school year.

This year, we had our biggest turnover year ever. We celebrated **18 graduations** and welcomed a record-breaking **30 new Scholars**, meaning one third of the 2022 student cohort was new to Wily. That growth was a huge undertaking, and we couldn't have done it without you. **Your generous support** funded our program and grew the Wily Pack. Thank you!

All financial statistics for 2022 are unaudited. If you would like to request a copy of the full, audited financial statements in May of 2023, please email Ashley Linell at ashley@thewilynetwork.org.

2022 Revenue

Individuals	\$1,623,032
Corporations and Foundations	\$492,996
Total	\$2,116,028

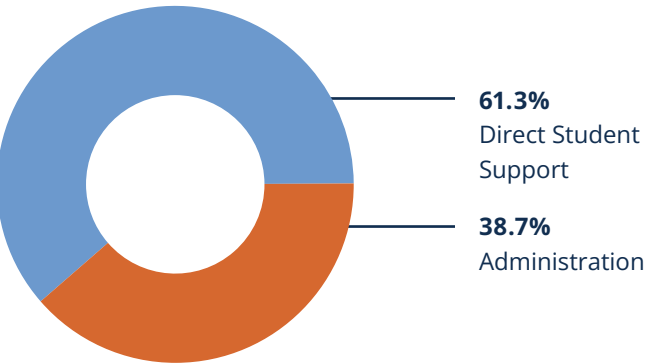


“ As a former Wily Scholar, I now sit in front of you as a first generation college graduate on his way to stability. I maintain a full-time steady job, a roof over my head, and a clear mind to focus on what is next. Dreams are tangible goals, and I am on my way to reaching my dreams because of the support donors have put into the Wily Network.

J'Saun (he/him), Wily Alum

2022 Expenses

Direct Student Support	\$1,194,112
Administration	\$755,229
Total	\$1,949,341





Appreciating Generosity

Wily Partners

We are honored to recognize our Wily Partners: those who contribute \$1,000 or more to the Wily Network during the fiscal year. We are truly grateful for the tremendous contribution that Wily Partners make to our program. Your generosity keeps our program running so we can be there for Scholars from freshman year through graduation.

\$100,000+

Katie and Don Bramley*
Daniel E. Offutt III Charitable Trust
Ilene Beal Charitable Foundation
Stevie and David Spina*

\$99,999-\$50,000

Carole Remick Charitable Foundation
Charles Hayden Foundation
Diane Coulopoulos
Katherine DePasquale and Rodolfo Chaparro
J.E. & Z.B. Butler Foundation*
Life Science Cares
Lloyd G. Balfour Foundation
Kim and Greg Pappas*
Judi and Bill Rosensweig*
Thompson Family Foundation
Wellington Management Foundation
Robin and Marc Wolpov*
Debbi and Michael Young*

\$49,999-\$25,000

Nevin and Kristine Chitkara*
Cummings Foundation
DCU For Kids
Further Forward Foundation*
Income Research + Management
Liberty Mutual
Moderna Charitable Foundation
Kristin and Stephen Mugford
Hilary and Langley Steinert*
The 'Quin House

\$24,999-\$10,000

Anonymous
Patty and Mel Alperin*
Anna B. Stearns Charitable Foundation
Audax Charitable Foundation
Bain Capital Children's Charity
Cabot Family Charitable Trust
Adrienne and Michael Canning
Jen and Mark Cordes
Helena D'Angelo*
Lynne and Joe Delaney
Cindy and Jim Duffy
Liz and Art Greenwood
Ed and Barbara Hajim
Lisa Howe and Stephen Kaufer
John W. Alden Trust
Anne and Mark Kelley*
Cynthia and Seth Lawry
Renee Levin and Larry Jacobson*
Zach and Laurel Martin*
Brooke and Will Muggia
Michele Norman and Steve Loose*
Susan and Chris Pappas
Kathy and Bill Parent*
Susan Patkin
Dianne Pink and J. Roy Pottle
Susan and Stu Porter
Gail and Jim Radley*
Barbara and Arthur Simons*
Michael Simons*
Scott and Ursula Steele
Westfield Capital Management
Natalie and Rod Wright*

\$9,999-\$5,000

Kathy and Mark Alperin*
Mimi and Barry Alperin*
Sheila and Marc Boyle
Brookline Bank
Jennifer and Bob Ewing
Linda and Mark Griffin
Allison and Andrew Hirsch
Jason Hayes Foundation*
Paul and Edith Babson Foundation
Philanthropy Massachusetts
Kris Schaefer and Lisa Chapnick*
St. Andrew's Episcopal Church
St. Jean Family
Chris Sullivan
Sunovion Pharmaceuticals, Inc.
TJX Foundation

\$4,999-\$2,500

Anonymous
Ann and Arthur Barrett
Dedham Savings Bank
Joy and Mark Denomme*
Mark DiVincenzo and Terry McGowan*
Hope and David Hirsch
Kathleen and Rob Ix
Lizanne and John Kenney
Ryan and Jaime Kim
Judi and Tim King*
Kelley Laurel and Dan Brownell
Kate Mead
Metro Credit Union
Morrison and Foerster Foundation
Sheila Murphy and Jim Martin
Nicole and Jamie Rhind*
Jen Stein and Michael Simons*
Hillary and Carlo von Schroeter
Suzanne and David Wakefield
Tricia and Tom Wynn
Debra and Christopher Wysopal

\$2,499-\$1,000

Anonymous (2)
Alexandra Shaw Ablon
Mickey Alperin
Ruth and Jeff Barker*
Corinne Basler
Elissa Birke and Shawn Fitzgibbon*
Donna Bonaparte
Denise and David Breazzano

Brianna Lynn Kirby Memorial Fund
The Butler Family
Linda Cabot and Ed Anderson*
Aimee Cardwell
Commonwealth Cares
Trinita Conway
Janet and Steve Correia*
Hanley Cox
Dedham Women's Exchange
Deloitte
Daniel Doran
Katherine and Robert Eyre
Nancy and Arthur Feibus*
Christine and Mitchell Finer
Katie Firth
David Franklin
Beth Kressley Goldstein and Dennis Goldstein
Liz Hayden
Emily Helm
Tara Hendricks
Iliana Joaquin and Pamela Parker
Cheryle and Jim Joyce
Mike and Parrisa Julian*
Jeff Keselman
Jeff Kline*
Hannah Lawry
Margaret Lewis and Dan Glotzbach
Manulife
Pam and Andy Martin
Meredith Mendelson
Lisa Miller*
Maggie Moore and Michael Fleisher
Aletta and Chris Mutz
Natixis Investment Managers
Tara and Jarrod Patten
Patton Family
J. Brian Potts
Lisa and Benjamin Procter
Pat Profeta and Rob Aranow
Raytheon Technologies
Amy Rothstein
Nancy Rowe
Andy and Stephanie Rudzinski*
Caroline and David Ryan
Town Fair Tire
United Health Group
Ellen and Bob Volpe
John and Kristine Wahr
Leann and Brian Walsh*
Byron and Anita Wien
Jane Yusen

The Wily Network Student Assistance Fund at Middlebury College

Katie and Don Bramley*
Natalie and Rod Wright*

*Five years of consecutive giving

Appreciating Generosity

Friends of Wily

Gifts of every amount make a difference for Wily Scholars and our growing community, the Wily Pack. We are proud to recognize all Friends of Wily for their partnership and generosity.

- Anonymous (8)

AAFCPAs

Jackie Abraham

Serra and Adam Abramson

Jan Acquaviva

Kate and Ajay Agarwal

Carly Alperin

Amazon Smile*

Meg Anderson

Jeremiah Anthony

Christina Arakelian

Erica Aryah

Kate Badertscher

Lisa Baer and Stephen Kutenplon

Michel Bamani

Bank of America

Jennifer Barlage

Joey Barr

Amy and Alan Barry

Julien Barthelemy

Gene Barton

Karen Bates

Auli and Ken Batts

Jared Baumann

Elizabeth Bennett

Holly Bernene

Nikki and Ken Bettenhauser

Alex Bien

Aaron Birnbaum

Daniel and Shimrit Black

Zoe Bleicher

Victoria and Wayne Bloom

Kristine and Craig Bloomer*

Laura Bloomer*

Marcella and Pieter Boelhouwer
- Cheryl and Jim Boland

Beth and Mark Bono

Jeremy Boraks

Linda and Mark Borden

Ilana Bornstein

Rachel Bossuk

Boston Realty Advisors

Ben Bramley

Jackson Bramley

June and Michael Bramley*

Michael Bramley*

Nikki Bramley

Will Bramley

Kathy Brennan and Gerald Cianciolo

Steve Brennan

Janelle Bridson

Tanya and Guy Broadbent

Laura Broffman and Guillermo Narváez Paliza

Brookline Booksmith

Sarah and Bob Bua

Helen Buck*

Pam Buckley

Adam Burke

Sharon Burke

Sam Burton

Anne Cadigan and Mike Gaziano

Jackie Callori

Howard Cannon

Joanne and Mike Cantara

Taylor Capuano and Craig Dwyer

James Carroll

Patrick Carroll

Sarah Carroll

“When it feels like it’s just you versus all these mountains of things you have to do, it can be a little scary. But when you have someone who’s taken an active interest in you, it makes you feel a little bit more solid. Like, I have other people putting their weight behind me.

Jordan (he/him), Wily Alum

- Daria Cenedella

Kate Chang

Sharon Chapman

Hailey Cherepon

Chevron

Amanda Chiang

Chicago Trading Company

Mary and George Chin*

Elizabeth and Stephen Clarke

Jean Clayette

Robin Clebnik

Julie and Ivan Clements

Ellen Pinkos Cobb*

Harry Cohen

Kathy and Scott Cohen

Sophie Cohen

Jeri and Michael Cooper

Jodi and Daniel Cooper*

Krisbelle Graciella Cosme

Jennifer Couture and Stephen Rodenhiser

Austin and Caroline Crouse

Toni Cuevas

Claire Culliton

Kathleen and Tim Culver

Kathy and Bob Cunha*

Mary Cunningham

Nancy and Mike Curry

Heidi and Barry Daitch

Stacey and Pat Daley

Mary and Peter Darveau

Christina and Robb Deignan

Maxell DeLuca

Joseph Desimone
- Mary Jane and Jim Devins*

Joseph DiFilippo

Daniel Doherty

Diane Donley

Amy and Billy Drucker

Gabe and Joe Dunn

Sam Dunn

Joe Du Pont

Michelle Liberman Eisenberg and Adam Eisenberg

Lily Eligator

Emmanuel College

Ross Engelman

Sharon and Rob Erman

Carly Euler

Kristen Farnham

Beth and Kevin Farrell

Francey Fenton

Ruth Ferguson

Windsor Ferrara

Natalie Figueroa

Avery Finkel

Marlana Fireman

Sheila and Bob Flory

Doreen and Brian Fogarty

Foley Hoag Foundation

Leigh Forbed

Jennifer and Anthony Fortunato

Christopher Fossella

Fred Foulkes

Lauren Fragoza

Robert Frazier

Bret Furio

Marc Furman

- Kathi-Ann and Ted Gage

Robyn and Dale Garth*

Mary George

Karen and Jim Gerard

Paige Gilbert

Ann Gillespie and Bob Nuzzo

Anna Gjestebj Abell

Kelly and Michael Glew

Sonya Glickman

Josh Goldenberg

Kelsey Goossens

Olivia Grady

Chrissy and Mike Gray

Rene Greene

Cleo Greenwood

Emmett Greenwood

Patricia and Paul Griffin

Arlene Grosberg

Rachel Gubbay

Becky and John Haase

Susan Hall

Terrie and David Hallal

Leslie and Dan Hamilton

Becky Hamlin

Sarah Hansen

Jessica and Brian Harrington

Allie Harris

Linda Healy

Patricia Heavey

Bridget and Michael Henry

Jenna Hill

Caroline and Ken Himmelman*

- Debbie and Tom Hoffman

Megan and Chris Holding

Tammy Horung

Leslie Householder

Beth and John Howard*

Brenda and Jim Hsu*

Carol Hudson

Humana

Lydia and Dave Icke

Sarah and Josh Jackson

Alison Poorvu Jaffe and Daniel Jaffe

Adam Janes

Ashley Janes

Ingrid and Dale Janes

Sarah Janes

Brent and Jane Johnstone

Barbara and Scott Jones

Robin and Tripp Jones

Jones Lang Lasalle

Shaina Kaplan

Vicky and Tom Keiser

Mary Margaret Kenney

Mary and Jeff Keough*

Julie King and Greg Rossino

Evan King

Ellen King*

Vicki and Norty Knox

Laura Korkeakivi

Natalie Krause and Alex Mukherjee

Eleanor Krause

Cece and Fred Krokenburger

Patricia and George Kung

- Emily and Brett L’Esperance

Stephen Lambert

Mari Lanthrop

Kim and Steve Lanzoni

Amy Lauer and Mike Kelly

Lauren and Sean Lele

Alex Lemmer

Madeline and Mark Lewis*

Claudia and Ray Liberatore

Ashley and John Linell*

Josie Linell

Wil Linell

Amy Lipton and Joe Desantis

Susie and Tony Lisa

Mary Beth and Eric Lisman

Jared Littlejohn

Rose and Bill Lovejoy

Patrick Lovelace

Stacy Mach

Jane and Mike MacKeen

Lauren MacMillan

Ruby Macsai-Goren

Shelby Magid

Nick and Suzy Malone

Kristin Maloney

Robin and Mike Malouf

Peter Maris

Sharon Martens

Linda and Jim Martindale

Martin Jr.

Karen Massey

Alain Mathieu

- Cara and Arthur Maxwell

James Mayer

Coleen and Scott McAdam

Jeff McCormick

Jack McDaniel

Anne McGrath

Anthony McLeod

Michelle Meal

Vicki Meany

Dr. Julie Medley

Sara Miller Blanc and Jonathan Blanc*

Matt Mills

Lauren Mistretta

Meredith Monaghan

Annie Montesano and Dan Scheibe

Denise Mooney

Bobby and Jeff Morgenstern

Kate Morreale

Dan Mutty

Anne Nadeau

Lisa Namerow and Fred Tilden

Michele Nathan

Maria Nava

Amy Newell

Shaun Ngo

Peter Niles

George Noyes

David O’Connor

Greta O’Marah

Monica O’Neil

Laura and Matt Olton

Sue Orenstein and Jay Leib



Our Feature in The New Yorker

We were honored to be the subject of a letter published in *The New Yorker* this past spring! The short piece was written by Wily Advisory Council member **Annie Montesano**.

Annie’s letter referenced an article about University of Pennsylvania graduate **Mackenzie Fierceton**, a Rhodes Scholar recipient and foster care alum who was accused by her school of lying about her upbringing.



Read Annie’s letter in *The New Yorker*



Read our blog post about Mackenzie’s story

*Five years of consecutive giving

Appreciating Generosity

Jennifer and Chris Pachus
Mariela Paez and Miguel Vega
Lisa and Ned Parsons
Sanjay Pathak
Gretchen Pathak
Heidi and Lewis Pearlson
Emily and Mike Pelton
Janine and Bob Penfield*
Courtney and Bruce Platzman
Nina Policano
Arinn Polinsky
Catherine and Lenny Polivy
Maya Poorvu
Helen and Joel Portugal
Aminah Praileau
Allison Provost
Rob Q.
Cristiana Quinn
Carol Reich
Renee and Matt Reimer
Marcia Reinstein
Sammi Reinstein
Sydney Resendez
Meg Reynolds and Skip McKee
Joyce Ripianzi
Jill Rizzotti
Jonathan Robie
Nia Robinson
Rachel Rock and Josh Levy
Sue and Steve Rodman
Mel Rogow
Michael Rosenblatt
Jessica Rosenbloom
Helen Rosenfeld and
Asheesh Advani
Carol Rosensweig and
Charlene Grant
Lisa and Dave Rubenstein
Penny Saftler
Heidi and Jason Saghir
Julie and Robert Salomon
Cris Santo and Joe Panepinto
Karla Santos
Sue and Ted Saraceno
Kathryn Sargent and Chris Wilson
Clare Saunders

Meg Sayre
Matthew Scarafoni
Tricia and Chris Schade
Louise Schwartz
Pamela Schwartz
Judi Seldin
Sephora
Risa Shames and Neil Silverston
Virginia Shannon
Andrea and Michael Shaw
Jacqueline Shoback
Sonia and Jason Silverman*
Linda and Richard Silverman*
Mason Smith and Gordon Green
Janine Smith
Maryann Smith
Susan and Kevin Smith
Tanya and Jim Snyder
Rachel Solomons
Eva Spitzen
Caitlin Stadtler
Emma Steele
Elizabeth Stein
Donna Stoddard
Melissa Stoller and Nick Wittemen
Temple Beth-El
Nisha Thakrar and Prem Das
Patricia Thalheimer
The Sudbury Foundation
Lisa Thompson
Tinder
Sarah Tittle and Ken Backhus
Amy and Dave Tormey
Brooke Torres
Maria Trachy
Sarah Tuomey
Karen and Linus Vachon
Jamie and James Vandervelden
Claire Van Flandern
Liz Van Flandern
Peggy and Don Van Slochem
Kerry and Greg Veitch
Vertex Pharmaceuticals
Lise Vestergaard
Hennah Vohra
Sophia Wadsworth

Rachelle Walker
Marcia Walsh
Asa Waterworth
Josh Waxman
David Webster
Wellington Management Company
Sarah Wharton
Gregory Whitehead
Michele and Bryan Whyte
Julie Williams

Pam Willsey
Willsey Connections
Erika Winn
Ellie and Mark Winthrop
Faith Witte
Natalie and Jonny Yaollen
Kelsey Young
Leo Young
Janice Zajchowski
Mandy Zobel

Wily is lucky to benefit from the insight of two Scholar Representatives on our Board of Directors. Scholar Board Rep **Marissa** graduated this past May, and though we've missed her at board meetings, we are so excited for her to embark on her next chapter!

We were thrilled to welcome **Ajani** as Wily's newest Scholar Board Representative. He joined our senior Scholar Board Rep, **Shalona**.



Scholar Board Representatives Shalona (left) and Ajani (right) attend the first board meeting of 2023.

*Five years of consecutive giving

Honor and Memory Gifts

Donor	In Honor of
Anonymous	Madison Snyder
Anonymous	Rachelle Walker
Anonymous	Wendy White
Anonymous	Bonnie Yezukevich
AAFCPAs	Joyce Ripianzi
Daniel and Shimrit Black	Judi Alperin King
June and Michael Bramley	Don Bramley
June and Michael Bramley	Katie Bramley
Helen Buck	Amy Buck Tormey
Kathy and Scott Cohen	Sophie Cohen
Amy and Billy Drucker	Joy Denomme
Emmanuel College	Marissa Spletter and Julie Beckham
Patricia Heavey	Ellen H. Volpe
Leslie Householder	Hanley Cox
Meredith Mendelson	Judi Alperin King
Bobby and Jeff Morgenstern	Katie Bramley
Sheila Murphy and Jim Martin	Judi Alperin King
J. Brian Potts	Madison Knapp
Sonia and Jason Silverman	The King Family
Sonia and Jason Silverman	Mr. & Mrs. Melvin G. Alperin
The Sudbury Foundation	Victor Figueroa
Hillary and Carlo von Schroeter	Katie Bramley
Gregory Whitehead	Editas Quality Team

Donor	In Memory of
Brianna Lynn Kirby Memorial Fund	Brianna Lynn Kirby
Jean Clayette	Cornelia Wadsworth Robart
Katie Firth	Chennelle Jackson
Beth and John Howard	Barbara McManus
Iliana Joaquin and Pamela Parker	Nick Perry
Patricia and George Kung	Emily KaiLam Kung
Lisa Namerow and Fred Tilden	Martha Namerow
Lise Vestergaard	Cornelia Wadsworth Robart
Sophia Wadsworth	Cornelia Wadsworth Robart

“As I met more board members, I fostered a sense of empowerment within myself that I looked to translate to the community...I am excited to continue these relationships and maintain involvement.

Marissa (she/her), Boston College '22

“The Wily pack is a group of individuals who support you and your goals, and are there for you no matter what.

Taylor (she/her), Wily Alum

Corporations and Foundations

AAFCPAs	Income Research + Management
Amazon Smile*	J.E. & Z.B. Butler Foundation*
Anna B. Stearns Charitable Foundation	Jason Hayes Foundation*
Audax Charitable Foundation	John W. Alden Trust
Bain Capital Children's Charity	Liberty Mutual
Boston Realty Advisors	Life Science Cares
Brianna Lynn Kirby Memorial Fund	Lloyd G. Balfour Foundation
Brookline Bank	Metro Credit Union
Brookline Booksmith	Moderna Charitable Foundation
Carole Remick Charitable Foundation	Morrison and Foerster Foundation
Charles Hayden Foundation	Paul and Edith Babson Foundation
Commonwealth Cares	Philanthropy Massachusetts
Cummings Foundation	St. Andrew's Episcopal Church
DCU For Kids*	Sunovion Pharmaceuticals, Inc.
Dedham Savings Bank	Temple Beth-El
Dedham Women's Exchange	The 'Quin House
Deloitte	The Sudbury Foundation
Emmanuel College	TJX Foundation
Foley Hoag Foundation	Town Fair Tire
Further Forward Foundation*	Wellington Management Foundation
Ilene Beal Charitable Foundation	Westfield Capital Management
	Willsey Connections

Matching Gifts

AAFCPAs	Natixis Investment Managers
Bank of America	Raytheon Technologies
Chevron	Sephora
Chicago Trading Company	Tinder
Humana	United Health Group
Jones Lang Lasalle	Vertex Pharmaceuticals
Manulife	Wellington Management Company

Appreciating Generosity

In Kind Donors

From birthday gifts to free medical services, our in-kind donors made sure that Scholars had access to everything they needed to thrive in school. Thank you to our community partners, volunteers and *pro bono* providers for being there for Wily Scholars in 2022.



Volunteers from MFS Investment Management wrap holiday gifts picked out for each Wily Scholar by their Gift Givers.

Care Packages

Welcome Back Care Packages

Janelle Bridson
Laura Broffman and
Guillermo Narváez Paliza
Anne Cadigan and Mike
Gaziano, *Chair*
James Carroll, *Chair*
Kate Cole, *Chair*
Commonwealth Cares
Austin and Caroline Crouse
Carly Euler
Natalie Figueroa
Sarah Janes
Natalie Krause and Alex Mukherjee
Josie Linell
Matthew McLaughlin, *Chair*
Ruby Macsai-Goren
MIT Sloan School of Management
Sammi Reinstein
Shea & Company
Sunovion Pharmaceuticals, Inc.
Patsy Thompson, *Chair*
Kyla Truman and Phillip Graham
Kelsey Young
Leo Young
Joan Youngwirth, *Chair*

Winter Exams Care Packages

Allison Abrams, *Chair*
Katie Binda
Adrienne Canning

Lisa Capone
Kristine Chitkara
Kit Cunningham, *Chair*
Charlie Denomme, *Chair*
Joy Denomme, *Chair*
Erin Epker, *Chair*
Carolyn Glass
Hilary Glynn
Kristina Hatem
Gina and Dave Heaney, *Chairs*
Ann Hunnewell
Becky King
Ashley Linell
Lisa Lynch
Elaine Mann
Betsy Martel, *Chair*
National Charity League
Elizabeth Ohashi
Sharisse Cail Perry, *Chair*
St. Andrew's Episcopal Church
The Rivers School Class of 2023
Ellen Volpe, *Chair*
Cate, Eli and Luke Waldeck, *Chairs*
Amy Warner

Valentine's Day Care Packages

Kate and Mike Ascione, *Chairs*
Form Labs
Betsy Martel, *Chair*
National Charity League
Andrea Patton, *Chair*
Marcia Walsh, *Chair*

Spring Exams Care Packages

Joy Denomme, *Chair*
Kristan Gately, *Chair*
Melanie Jones, *Chair*
National Charity League
Andrea Patton, *Chair*
Synlogic, Inc.
Thayer Academy

Graduation Care Packages

Christina Arakelian
Audax Group
Karen Bates
Sheila Boyle
Katie and Don Bramley
Antonella and Alex Casale
Kate Cole
Bob Connors
Elizabeth Conte
Erik Dubovik
Jason Ellis
Anne Elton
Aly Gearty
Pamela Gildehaus
Lizanne and John Kenney, *Chairs*
Christina Larkin
Jay Mitchell
Annie Montesano, *Chair*
Sheila Murphy and Jim
Martin, *Chairs*
Anna O'Reily
Atra Oshana
Kathy and Bill Parent, *Chairs*
Jay Petricone
Lindsay Rice

Tricia and Chris Schade, *Chairs*
Virginia Shannon
Katerina Sheerin
Lisa and Garz Soule
Hilary Steinert, *Chair*
David Sullivan
Tuck Welch, *Chair*
Bobby Williams
Susie Winstanley
Li Zhang

Goods

Corporations and Foundations

Abuzz
Boston University's Questrom
School of Business
Foundation Medicine
Hope & Comfort
Marsh McLennan Agency
MFS Investment Management
National Charity League
Real World Playbook
Rockland Trust
The Winsor School

Individuals

Anonymous
Allison Abrams
Elizabeth and Stephen Clarke
Maureen and Joe Cofelice
The Conroy Family
Katie Curley
Janet Debavoise
Joy Denomme

Francey Fenton
Debbie Forte
Lee and Peter Frechette
Heather Keare
Brianne Miers
Janet Neissa
Donna Norwood
Denise O'Reilly
Susan Porter
Betsy and Mark Reale
Amy and Dave Robbins
Julia Rogers
Judi and Bill Rosensweig
Janet and Randy Seidl
Carol Wasik

Gift Giving

Allison Abrams
Kathy and Mark Alperin
Cheryl and Jim Boland
Stacy and Woody Bradford
Tanya and Guy Broadbent
Maureen Bryan
Trisha Bunce
Jen and Rich Carter
Kerry Carter
Sarah Coffey
Sheri Cohen
Alida Coo-Kendall
Jennifer Couture and
Stephen Rodenhiser
Laurie Crist
CC Donelan
Nancy and Bill Doyle
Amy and Billy Drucker
Cindy and Jim Duffy
Erin and Mark Epker
Frenkel-Popell Family
Diane Genereux
Christopher Gerndt
Linda and Mark Griffin
Terrie and David Hallal
Geoff Harlan
Cheryl and Steve Haynes
Gina and Dave Heaney
May and John Herr
Anne and Mark Kelley
Lizanne and John Kenney
Becky King
Judi and Tim King
Liza and John Knapp
Emily and Brett L'Esperance

Cindy and Bob Laughrea
Kelley Laurel and Dan Brownell
Renee Levin and Larry Jacobson
Mary Beth and Eric Lisman
Lisa Lynch and Michael Crafts
Lisa Maclean
Michelle and Neil MacLellan
Amy Martin
Cara and Arthur Maxwell
Anne McGrath
Michelle Meal
Monique Narrow Medici
Meredith Monaghan
Michele Nathan
Michele Norman and Steve Loose
Katie Oakes and Vahid Ownjazayeri
Kathy and Bill Parent
Laura Parker
Patton Family
Betsy and Mark Reale
Judith and Jack Remondi
Rachel Rock and Josh Levy
Judi and Bill Rosensweig
Nancy Rowe
Caroline and David Ryan
Cris Santo and Joe Panepinto
Aimee and Scott Sawyer
Kate and Andrew Scammon
Tricia and Chris Schade
Meg Secatore
Bonnie Sherman
Melissa and Allen Smith
St. Jean Family
Hilary and Langley Steinert
Donna and Scott Swanson
Meredith Talbot and David Litvak
Calista Thompson
Shanna Trufan
Cate, Eli and Luke Waldeck
Kim West
Robin and Marc Wolpov
Natalie and Rod Wright

Professional Services

Jay Bacrania
Signet Education, LLC
Julie Beckham
Derren Brown
CFA Society of Boston
Aram Elovic
Elovic Dental
Brenna Forristall

Hencove Marketing
Lisa Howe
K & L Gates
Kevin Kozikowski
Jeffrey Kublin
ProOptical
Michael Macrides
Hercules Press
Dan Mutty
Atlum Marketing
Becky Pechenik Elovic
Elovic Dental
Kris Schaefer
Amy Tormey
Charleston Consulting Group
Judy Zimmerman

Ambassadors

Kathy Alperin
Melanie Bunden
Aiyana Currie
Joy Denomme
Katherine DePasquale
Francisca Fenton
Stephen Ferrick
Becky King
Craig Leen
Mary Beth Lisman
Dan Ryan
Danielle Shea
Hilary Steinert
Jeff Taylor

Turning the Tables Hosts

Joy Denomme
Susan Geraghty
Terrie and David Hallal
Cara and Arthur Maxwell
Lynda Voghel
Judy Zimmerman

Young Professionals Association

Nana Boakye-Mensah
Nicole Bramley
Janelle Bridson
Laura Broffman
Taylor Capuano

James Carroll
Patrick Carroll
Hailey Cherepon
Austin Crouse
Farrell Eldrian Wu
Carly Euler
Natalie Figueroa
Morgen Gallagher
Sarah Janes
Samantha King
Natalie Krause
Ila Kumar
Josie Linell
Ruby Macsai-Goren
Sara Miller Blanc
Guillermo Narváez Paliza
Sammi Reinstein
Kevin Richardson
Karine Sevan
Alina Tang
Kyla Truman
Joseph Urena
Rachelle Walker
Kelsey Young
Leo Young

Speaker Series Networkers

Shea Brown
Gayl Crump-Swaby
Kelley Ferreira
Kamia Grey-Anderson
Dorian Holliday
Katherine Kolodziejczyk
Ila Kumar
Monique Marshall-Veale
Meghan McNeil
Samantha Pare
Nandini Sunil
Marcus Vilmé

“Connecting with
Scholars from
my campus has made me
feel more connected to
my school.”

Anonymous, Wily Scholar

Join our Pack

Thank you to our volunteers!

We're always reminding Wily Scholars to **rely on the strength of their pack**. Volunteers are a critical part of that pack, from providing Scholars with thoughtful gifts and helping them make professional connections, to amplifying Wily's mission. **We are so grateful** for all of the incredible work they do.

We are so grateful to the volunteers who graciously hosted events for Wily this year! Thank you to **Joy Denomme, Susan Geraghty, Terrie Hallal, Cara Maxwell, Lynda Voghel, and Judy Zimmerman**.



Event hosts Susan Geraghty and Lynda Voghel host a beautiful rooftop event for Wily.



Volunteers from Audax Group build care packages on-site at Boston College.

How you can support Wily Scholars



Host a Wily Introduction Event

Bring a Wily staff member to your home or office to speak to your family, friends and colleagues about our mission. Virtual events are a great option.



Host a Fundraiser

From setting up a Facebook fundraiser to organizing a gift card drive at your work or school, we are so grateful when our community members host fundraisers! We are always happy to help you brainstorm or plan.



Support Scholars with a Gift Card

When you give a gift card to a Scholar, you give them more than the dollar amount on the card. You provide them with the ability to join their peers in going shopping or getting a cup of coffee without stress.

If you are interested in learning more about our volunteer opportunities, please reach out to Program and Volunteer Coordinator Alex Hendricks (she/her) at alex@thewilynetwork.org.



Create Care Packages for Scholars

Receiving a care package filled with tasty snacks, gift cards, encouraging notes, and other goodies gives Scholars a boost while they focus on their schoolwork.



Become a Gift Giver for Scholars

Receiving gifts for birthdays, holidays and graduation lets Scholars know that people are thinking of them. Help a student celebrate the milestones along their way through college.



Support Wily Career Networking

Scholars want to connect with professionals from a wide range of backgrounds, interests and ambitions. Share your knowledge and experience, and help them build a network for future success.



Join the Young Professionals Association

Join a driven group of young professionals in raising awareness of Wily's mission. Grow your network while helping us grow ours.



Interns at Shea and Company join a care package building event for Wily Scholars.



From left: Mary Beth Lisman, Becky King and Francey Fenton help make Wily's second annual Career Fair a success.



Young Professionals Association members gather for a happy hour and fundraiser for Wily.

Wily by the numbers throughout 2022

One of the most meaningful ways you can make a difference for Wily is through financial support. Contributions of every amount help!

Scan our QR code or visit thewilynnetwork.org/donate to make a gift today. For information about gifts of stock or other securities, or to create a planned gift, please call 781-355-6527.



Make a tax-deductible donation

Please note: Every effort has been made to ensure that these lists of donors are accurate and complete. If your name has been inadvertently omitted or is listed incorrectly, please accept our apologies and notify **Sophie Cohen**, Marketing & Communications Coordinator at sophie@thewilynnetwork.org.