

PUTTING THE PIECES TOGETHER



Inside

Dear Wily Pack	1	An Evening with Emi Nietfeld	16
Strategic Plan	3	The Pieces of Wily's Scholar Services	18
Building the Puzzle After College	4	Clinical Coaching	20
The Pieces Come Together	6	Wily Scholars and Career Opportunities	22
The Ilene Beal Scholar Speaker Series	8	Appreciating Generosity	25
Fund-A-Scholar	10	Care Package Program	38
Partner Spotlight	12	Contribute your Piece to the Puzzle	40
Wily in the World	14	Young Professionals Association	41

Our Mission

Wily Scholars bring unique experiences, challenges, strengths, and goals to their college journeys. Some have experienced homelessness or foster care, some have been denied family support due to their sexual orientation or gender identity, and some have family members dealing with addiction, major mental illness, or incarceration. All are navigating life independently.

Wily Scholars arrive on campus already possessing the talent, motivation and self-reliance for college success. But once in school, they are tasked with navigating overwhelming systemic obstacles. The Wily Network works to ensure Scholars have the tools and networks necessary to thrive in four-year residential colleges and transition successfully into post-college life.

Our Diversity, Equity, Inclusion, and Belonging Commitment

At the Wily Network, our core values mobilize us to achieve our mission. We are a listening and learning organization, which is one of the reasons we consistently strive to deepen our understanding of how systemic bias and disparities impact the BIPOC community and other underrepresented groups.

We address inequities by staying aware of how they manifest in and impact our organization and our community, and by taking action through advocacy, allyship, and anti-racism practices to ensure we're acting in partnership with underrepresented communities.

2024 Staff

- Natalie Allen, MHC *(she/her)*
Clinical Scholar Coach
- Laura Broffman *(she/her)*
Operations Manager
- Rocío Carrión, MEd *(ella/she)*
Clinical Scholar Coach
- Korie Clegg, MSW *(she/her)*
Senior Clinical Scholar Coach
- Sophie Cohen *(she/her)*
Communications & Grants Manager
- Krisbelle Cosme *(she/her)*
Career & Financial Aid Coach
- Gabrielle Emerson *(she/her)*
Scholar Engagement Coordinator
- Susan Goldscheid, MAT *(she/her)*
Senior Clinical Scholar Coach
- Tobias Hartranft *(he/him)*
Operations Coordinator
- Judi Alperin King, PhD *(she/her)*
Founder & Executive Director
- Ashley Linell *(she/her)*
Director of Development & Communications
- Madjeen Lorthe, MEd *(she/her)*
Senior Clinical Scholar Coach
- Kayla McArdle, MSW, LCSW *(she/her)*
Clinical Scholar Coach
- Zubin Mistri, MDiv *(he/him)*
Senior Clinical Scholar Coach
- Ine Ogagan, MS, LCSW *(she/her)*
Director of Clinical Coaching
- Harshini Senthil *(she/her)*
Development Coordinator
- Bonnie Yezukevich, LICSW *(she/her)*
Director of Scholar Engagement

Dear Wily Pack,

In 2015, we started the Wily Network with just one piece of the puzzle: awareness. We knew there was a group of students on every college campus who were invisible in plain sight.

Over the last eight years, this community has worked tirelessly to put the rest of the puzzle together. Together we built a program that provides students with individually-tailored support in every area of life: health, finances, education, community, and more.

The result is that by the end of 2023, we were standing by **76 Wily Scholars'** sides as they worked towards their goal of graduating college. Our community of alums is now **68 strong**.

As we move into 2024, Wily must double down on our ability to be present for Scholars. College campuses have become increasingly complicated places to navigate, but sometimes, it just takes finding one key piece for the next part of the puzzle to snap into place.

Thank you for being a critical piece of the puzzle.

Judi



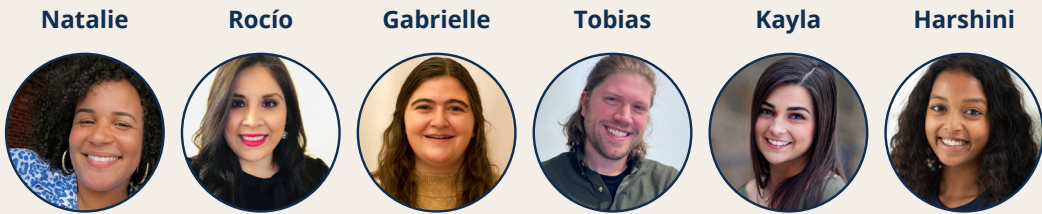
Judi (left) plays musical chairs with Wily Scholars at Spring Community Day

2023 Staff Changes

In 2023, we said goodbye to several members of our staff as they transitioned to new roles, and we welcomed six new staff members to our growing Pack! We're excited to have Natalie, Rocío, Gabrielle, Tobias, Kayla and Harshini on the team.

Acknowledgements

- Design: Amy Collier
- Proofreaders: Kathy Alperin and Katherine DePasquale
- Photographers: Kristie Dean, Bentonio Soja and others



2024 Leadership

Board of Directors

Stephen Barber <i>(he/him)</i>	Melanie Guzman <i>(she/they)</i> <i>Scholar Representative</i>	Alain Mathieu <i>(he/him)</i>	Sharisse Cail Perry <i>(she/her)</i>
Don Bramley <i>(he/him)</i>	Allison Hirsch <i>(she/her)</i>	Sara Miller Blanc <i>(she/her)</i>	Adriana Cordero Raines <i>(she/her)</i>
Katie Bramley <i>(she/her)</i> <i>Chair</i>	Treasurer	Michele Norman <i>(she/her)</i>	Scott Steele <i>(he/him)</i>
Nevin Chitkara <i>(he/him)</i>	Judi Alperin King <i>(she/her)</i>	Osamagbe Osagie <i>(she/her)</i>	Hilary Steinert <i>(she/her)</i>
Mark DiVincenzo <i>(he/him)</i>	Cindy Lawry	Nicole Pantiledes <i>(she/her)</i> <i>Scholar Representative</i>	
	Zach Martin <i>(he/him)</i>	Edward (Ned) Parsons <i>(he/him)</i>	

Advisory Council

Bryan Allard <i>(he/him)</i>	Margaret Lewis <i>(she/her)</i>	Steven Pemberton <i>(he/him)</i>	Carolyn Shaughnessy <i>(she/her)</i>
Donna Bonaparte <i>(she/her)</i>	Meredith Mendelson <i>(she/her)</i>	Kathryn Sargent <i>(she/her)</i>	Leann Walsh <i>(she/her)</i>
Francisca Fenton <i>(she/her)</i>	Annie Montesano <i>(she/her)</i>	Kristina Gulick	
Kelly Glew <i>(she/her)</i>	Sheila Murphy <i>(she/her)</i>	Schaefer <i>(she/her)</i>	
Michael Julian <i>(he/him)</i>	Andrea Patton <i>(she/her)</i>	Jennifer Schoen <i>(she/her)</i>	

Honorary Board

Ed Hajim <i>(he/him)</i>	David Spina <i>(he/him)</i>
Kim Pappas <i>(she/her)</i>	Stevie Spina <i>(she/her)</i>
Judi Rosensweig <i>(she/her)</i>	Robin Wolpow <i>(she/her)</i>

Spotlight: Advisory Council breakfast

Advisory Council member **Sheila Murphy** organized a breakfast for council members. They gathered to discuss the future of the council and new, creative ideas for supporting Wily.



Wily's Advisory Council gathers at the 2023 Ilene Beal Scholar Speaker Series

Strategic Plan

Throughout 2023, the Wily Network leadership team developed a multi-year strategic plan that aligns with our mission and core values.

This process included convening the board and staff leadership to reflect on Wily's accomplishments, strengths, challenges, and key considerations for the future.



Our Core Values

 **Wily Scholars are the heart of our mission**

We shape every decision we make around how best to partner with Scholars during their college journeys. Scholars' voices are a critical component of our decision-making process. We reflect on how each of our individual perspectives and identities influences our work with Scholars.

 **We believe in the strength of our pack**


Together, Wily Scholars form a pack that supports and celebrates one another. We work collaboratively with colleges, local nonprofits, and a dedicated base of volunteers to build a broad community of support for Scholars.

 **We believe in the power of deep, trusting relationships**

Wily is a reliable presence in Scholars' lives. We join Scholars in building reciprocal and transformational relationships. We are intentional about creating a space where all members of the Wily community can share their authentic selves and feel a true sense of belonging.

 **We are committed to the long term**

As an organization and in our individual relationships with Scholars, we only make commitments we can keep. We are there for Scholars through college and beyond. Wily alums remain an integral part of our pack.

 **We are a listening/learning organization committed to diversity, equity, inclusion and belonging**

We make decisions with intention. We continually evaluate our program and are adaptable to meet our staff and Scholar needs. The Wily Pack is made up of unique identities, backgrounds and perspectives, and we strive to honor each individual's lived experiences.

Building the Puzzle After College



Victor and Anya pose with their coach Susan at Wily's 2021 Fall Community Day



Rachel (left) spends time with fellow Wily Scholars at Wily's 2019 Spring Community Day



Victor (he/him)
Boston University '22

Data Scientist at a healthcare software company

What is a memory that encapsulates Wily for you?

"The annual Wily Career Fair truly embodies Wily's mission. The Wily Career Fair provides a unique experience for Wily

Scholars. In contrast to larger college-wide career fairs, which can be intimidating and feel like thousands of students are competing against one another, Wily offers a welcoming space, fostering a supportive community that helps level the playing field for Scholars coming from non-traditional backgrounds."

How do you feel Wily's presence in your life after graduation?

"Wily played a vital role in preparing me for life after college, primarily by providing a space for open communication of my thoughts and feelings. I grew up very

independent and self-reliant from a non-traditional home life. Consequently, forming close relationships with peers and adults was challenging. My Wily coach became one of the few people in my life I felt comfortable celebrating my successes and seeking support during tough times. The simple act of vocalizing my thoughts is a practice I still find crucial for deeper reflection and clearer decision-making today."



Rachel (she/her)
Middlebury College '20

Investor Engagement Associate at a climate and sustainability nonprofit

What is a memory that encapsulates Wily for you?

"Parents' Weekend at School was often a difficult weekend

to be on campus for those of us in Wily. It felt like there were few places to go that hadn't been transformed into spaces meant for students and their parents. To make it easier, Wily took us off campus so we could do something fun with other Scholars and have a positive memory instead. I think that really encapsulates how Wily cares about not just the academic or professional well-being of students, but also the emotional well-being of students."

How do you feel Wily's presence in your life after graduation?

"Even now, my bed still has the blankets that Wily gave me, my desk has the office supplies, the kitchen has the cooking equipment, etc. It's been years since I graduated and I still really appreciate how I can look around my apartment and see pieces of Wily in almost every room. I realized after I graduated how much they'd done throughout college to prepare me for success in life after college."



Anya (she/her)
Boston University '22

Patient Coordinator at a dental office, applying to master's program in Educational Leadership and Policy

What is a memory that encapsulates Wily for you?

"Meeting people from different colleges and different backgrounds that had the

same struggles as me during college was very empowering, and honestly made me feel much less alone in my struggles of supporting myself. I always think back to the activities, like Community Days and group dinners, where I'd get to know everyone and see the happiness and smiles on everyone's faces."

How do you feel Wily's presence in your life after graduation?

"I still feel Wily's presence in many ways, even down to the doctors I see (shout out to my coach!). She helped me figure so much out logistically at a time where life felt like a mess, and I feel like she helped me jumpstart my life as an adult taking control of my own physical and mental health. I was able to get mental health support because of Wily and my coach, and that has helped me look after all other aspects of my health."

The Pieces Come Together

In 2023, we celebrated the graduations of 17 Wily Scholars!

The Wily Class of 2023 included majors in Aerospace Engineering, Sculpture, and Communications. On campus they directed musical groups, learned German, sang opera, and lent their talents to groups for women engineers and undergraduate men of color. Today they are pursuing law school, apprenticing with artists, and designing tech for airplanes (and piloting those planes during flight tests, too!).



A Boston College graduate hugs Wily's Director of Clinical Coaching, **Ine**



Wily's Major Gifts Manager, **Mike**, shares a graduation care package made by volunteers

Along with attending graduation ceremonies, we celebrated Wily's graduating seniors at our annual grad dinner. We welcomed back our alum speaker, **Hantoa**, who shared advice for graduates as they embark on their next chapter. We also heard from **Asjah Monroe**, Executive Director of Small House, Inc., about her own journey through college.

Read Asjah's graduation speech



Massachusetts Institute of Technology graduates pose for a photo together



Northeastern University graduates celebrate with their coach, **Nathalia** (center)

Life has a way of being hard in ways that you couldn't have anticipated. Keep going. Because it also surprises you with beauty that you couldn't have anticipated.



Asjah Monroe (she/her)
Executive Director of Small House, Inc.

You'll find the resources you need to thrive to your fullest potential. Make a name for yourself and show the world what you can do.



Hantoa (he/him)
Massachusetts Institute of Technology '21

The Ilene Beal Scholar Speaker Series

We kicked off 2023 with the **Ilene Beal Scholar Scholar Speaker Series** on January 9th. The event, Wily's fifth annual Scholar Panel, gave guests a glimpse into the impact of our program. Guests heard from a panel of four current Wily Scholars and one alum, moderated by Wily Advisory Council member Ed Walker.

Ilene Beal's example was the guiding force behind the event. We honored the remembrance of her birthday and highlighted her legacy.



ILENE BEAL
CHARITABLE FOUNDATION

Panelists

Anonymous Wily Scholar

Crystal (she/her), Wily Scholar, Northeastern University '23

David (he/they), Wily Scholar, MIT '23

Eric (he/him), Wily alum, UMass Dartmouth '19

Tiana (she/her), Wily Scholar, Northeastern University '23

Moderated by Edward Walker (he/him), Founder and President of Independent Consultants of Education



Right from the jump, Wily felt too good to be true. I get all emotional when I think about it. They really care about your well-being—not just so that you can have your basic needs met, but so that you can really thrive and you can have the capacity to pursue the things that you want from life.

Crystal (she/her), Northeastern University '23



A Wily alum (left), speaks with the guests at her table



The panelists and Wily alums pose for a photo



Wily's support is built on both the coach/Scholar relationship and the "strength of the pack." They respect the talent and capacity of Scholars, and build on it by meeting them where they are to help them get where they want to go—with integrity and authenticity.

Annie Montesano (she/her), Advisory Council member



Annie (left) and Hilary (right)

Thank you!

January marked the fifth year that **Annie Montesano** and **Hilary Steinert** have co-chaired our Speaker Series.

They have worked tirelessly over the last five years to engage the community in conversations around the college experience, and their dedication and vision have evolved the Speaker Series into the program it is today.

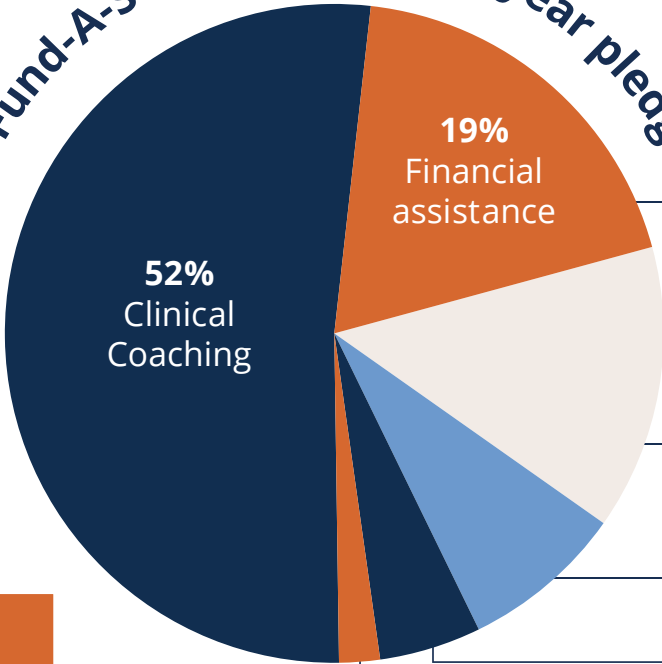
Thank you, Annie and Hilary, for your leadership and commitment.

The central piece of the puzzle: Wily's Fund-A-Scholar Program

Fund-A-Scholar donors are true partners to the Wily Network. Their support touches every aspect of our program, helping us ensure Scholars have access to all the pieces they need as they navigate college.

By contributing the average cost of our program for a Wily Scholar, Fund-A-Scholar donors make a transformative impact. Whether they fund a Scholar for one year or through a student's entire college experience, these generous donors give Wily the resources to provide highly personalized and flexible services to each Scholar.

Fund-A-Scholar \$60,000 4-year pledge



- e.g., groceries, laptop, textbooks, dorm items, school break housing, medical expenses
- 14% Monthly stipend
- 8% Community activities
- 5% Savings plan
- 2% Emergency funds

\$1,250
Per month

\$15,000
Per year

Though we spend an average of \$15,000 per student each year, we support each Scholar flexibly based on their individual needs. In any given year, we may spend \$25,000 supporting one Scholar, and \$11,500 on another.

Thank you to Wily's Fund-A-Scholar donors!

For a complete list of Fund-A-Scholar donors, please see page 26.

“ Thank you for believing that what I’m doing in college is worth it—and that it’s worth investing in.

Kahmile (he/him)
Massachusetts Institute of Technology '25

Wily's Growth 2016-2023

Key ● Wily Scholars ● New Graduates ● Alums

The term “Wily Scholars” encompasses all Scholars who worked with Wily in a calendar year, including those who joined our program or graduated mid-year.

8 Wily Scholars
2016

18 Wily Scholars
2017

37 Wily Scholars
3 new graduates
2018

49 Wily Scholars
5 new graduates
8 total alums
2019

66 Wily Scholars
13 new graduates
21 total alums
2020

73 Wily Scholars
12 new graduates
33 total alums
2021

78 Wily Scholars
18 new graduates
51 total alums
2022

86 Wily Scholars
17 new graduates
68 total alums
2023


Wily Scholars attend...

- Boston College
- Boston University
- Brandeis University
- Emerson College
- Harvard University
- Massachusetts College of Art and Design
- Massachusetts Institute of Technology
- Middlebury College
- Northeastern University
- Simmons University
- Suffolk University
- University of Massachusetts, Boston

Partner Spotlight LIFE SCIENCE CARES

Every Wily supporter contributes a piece to the puzzle, but few have contributed as many pieces as Life Science Cares. A collective effort supported by more than 100 Boston-area life science companies, Life Science Cares has donated to Wily since 2019—and they don't stop there.

Since 2019, Life Science Cares has...



Connected us with companies who have collectively made more than 130 care packages for Wily Scholars



Donated more than \$100,000 to the Wily Network over the last four years



Invited us to their annual Mini Golf for Good Tournament, where we were able to build relationships with local biotech companies



Trained our staff in storytelling, and provided space for us to workshop our stories with other peer nonprofits



Helped us build relationships with local nonprofits



Donated computers, furniture and more for the Wily office



Helped us respond to emergency needs during COVID



Connected nine Wily Scholars with summer internships at biotech companies through their program Project Onramp



*Judi catches up with **Life Science Cares** team members **Kelly Brawn** (right) and **Sarah MacDonald** (left) at a mixer where we had the opportunity to share our program with prospective corporate partners*



Representatives from **Safety Partners**, a **Life Science Cares** affiliate, attend Wily's Career Fair for the third year in a row



As a proud partner with the Wily Network, Life Science Cares Boston has seen the way their team empathetically and holistically supports students as they traverse the ups and downs of their college career.

Not only does Wily provide coaching and career support, but a unique opportunity for Scholars to forge a community that lasts a lifetime. We are grateful to everyone at the Wily Network for investing their time and hearts in supporting these future leaders!

Kelly M. Brawn, Ph.D. (she/her)
Head of Programs & Community Engagement



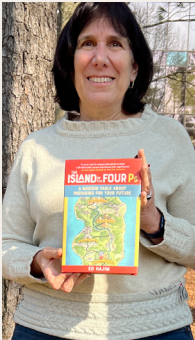
Wily team members **Harshini** and **Judi** reconnect with the team from nonprofit **Young Man with a Plan** at the 2023 **Mini Golf for Good** Tournament

Wily in the World

Wily has made great strides in getting our mission out to the world. In 2023, Wily was featured in numerous publications, community events and more! Take a look at the different ways Wily has gained exposure:



Judi is selected as one of 43 members to join **YW Boston's 2023 LeadBoston** cohort. The year-long inclusive leadership class looked at the systems in Boston with a focus on history, inequity and models for change. Wily Board Member **Adriana Cordero Raines** (left) is a LeadBoston class of 2022 alum.



Wily Honorary Board member **Ed Hajim's** new book, ***The Island of the Four Ps***, is released. We were honored to have Wily represented in a review on the book's back cover.

Pink Chair Storytellers features the Wily Network in their magazine, sharing our mission and work with readers across the South Shore.



Wellesley Weston Magazine publishes an article on Wily titled *Supporting Students Navigating College Without the Support of Family*.

Judi and Ine join a group of nonprofit leaders at the **Youth Aging Out of Foster Care Discussion** at City Hall, to convey to **Mayor Michelle Wu** the urgent needs of young adults who are navigating life on their own.

The Ilene Beal Charitable Foundation, a longtime supporter of our program, selects the Wily Network as a beneficiary of their **Non-Profit Benefit Concert and Showcase with Peter Mayer**.



The Wily Network is invited to participate in a roundtable discussion at **Camp Harbor View** with nonprofits, financial aid officers and scholarship grantors on financial aid for young people who rely on scholarships to fund their college journey.



Hamilton College's Alumni Magazine features the Wily Network in an article titled *Because Hamiltonians Increase Access: Judi Alperin King '83*.



Judi speaks at the **MorphMom** conference in Boston, sharing her career journey with women who are in the process of discovering their own next steps.



Wily is invited to speak at **MorphMom** again—this time at their conference in Rye, NY—sharing Wily's mission with a new audience.



Target Circle's Community Giving Program selects the Wily Network as a featured nonprofit, enabling Target customers to vote for Wily to receive donations. Target customers cast 110,217 votes for Wily!



Judi is interviewed on the podcast **The Story Behind her Success**, hosted by 2015 Massachusetts Broadcaster of the Year **Candy O'Terry** (left). **The Massachusetts Association of Student Financial Aid Administrators** picks the Wily Network as their featured nonprofit for the year and invites Wily to their annual luncheon.



Author **Emi** (left), reflected on her story with moderator, artist and producer **Treasure** (right)

You get to Harvard, you've accomplished this feat. And yet you're still having to deal with the residual pain of all that lay behind you. You have to reconcile these emotional wounds, even though you're no longer in the material circumstances that caused them.

Treasure (she/they), Harvard University '22

An Evening with Emi Nietfeld



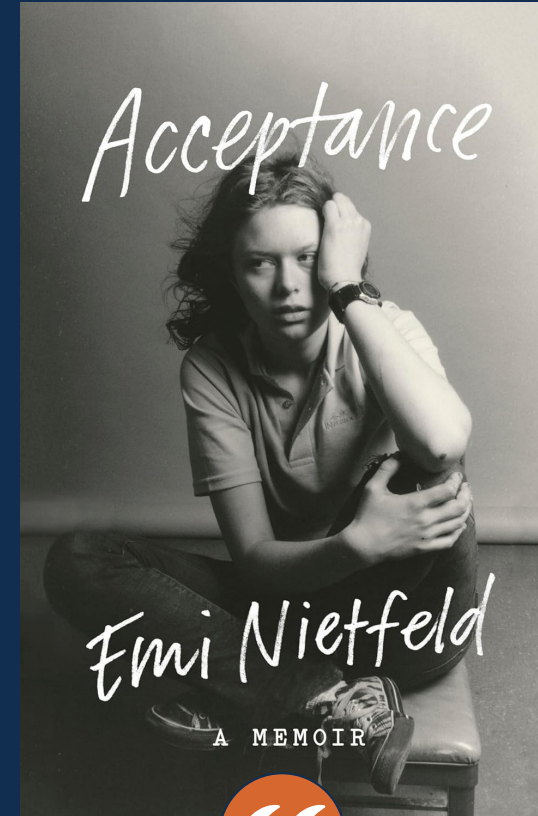
I spend every day trying to help people understand what it means to have a complicated, absent, or inconsistent family, and how that can derail your college journey. Then came the book *Acceptance* by Emi Nietfeld.

Judi Alperin King, PhD (she/her)
Founder & Executive Director

Emi's memoir illustrates the unique—and often overwhelming—pressures faced by college students navigating life on their own.

For Emi, those pressures came from family members, whose outreach to her was often draining and painful. Those pressures came from institutions, which wanted to hear about her tenacity and triumphs, and not about the ways in which she still needed help. Those pressures came from trying to live with trauma that her peers and professors couldn't see, and that she herself didn't fully understand: trauma that she sometimes had to use as a bargaining chip to access needed resources.

On November 29th, Wily Network supporters gathered to gain insight into Emi's road to and through college, which resonates with many Wily Scholars' journeys. Treasure, a Wily alum, engaged Emi in a thoughtful dialogue. A skilled moderator, Treasure drew on her own experience to frame questions and reflect on Emi's insights, deepening guests' understanding of Emi's story.



I started writing *Acceptance* when I was 17, right after I had submitted my college applications. I felt like I'd had to prove myself to be this exceptional "overcomer" who was a perfect survivor. Who had not only made it through all these bad circumstances with A's and a great SAT score, but also had been made stronger by everything that I had faced.

But that burden of trying to be so perfect, it really wore down on me. And so for me, it was really important to have this promise to myself that one day, I was going to tell the full story of what happened and to be honest in a way that I couldn't be back then.

Emi Nietfeld (she/her), Harvard University '15



New board member **Stephen Barber** (left), who wrapped up the event with remarks reflecting on his own college experience, with **Emi**, **Treasure** and **Judi**



Thank you to the event planning committee! From left: **Hilary Steinert**, **Annie Montesano**, **Joy Denomme**, **Mary Beth Lisman**, **Donna Bovi**, **Terrie Hallal**, **Cara Maxwell**

Watch Emi and Treasure's conversation, and learn more about the event and the book



The Pieces of Wily's Scholar Services

At Wily, three pieces come together to make up our program: clinical coaching, supplemental financial assistance, and community building & networking.



One-on-one clinical coaching:

Coaches build individualized, long-term relationships with each Scholar. Through consistent, individualized and holistic services, Scholars build the knowledge and skills to manage challenges and reach their goals.



Supplemental financial assistance:

Along with support in making a budget and completing their financial aid forms, Wily Scholars receive a monthly stipend and extra help with their expenses as needed.



Community building & networking:

Wily's events help Scholars develop peer relationships and find a community where they feel accepted, as well as to build social capital and prepare for their future careers.



Coaching taught me that no matter how old I am, I always should be looking to learn. The **community** piece taught me I'm not by myself. I can sit back and have fun and not feel judged for who I am. And I can do all that—learn and connect with people—because of the **financial** help, because I'm not worried about the finances that I've worried about my whole life.

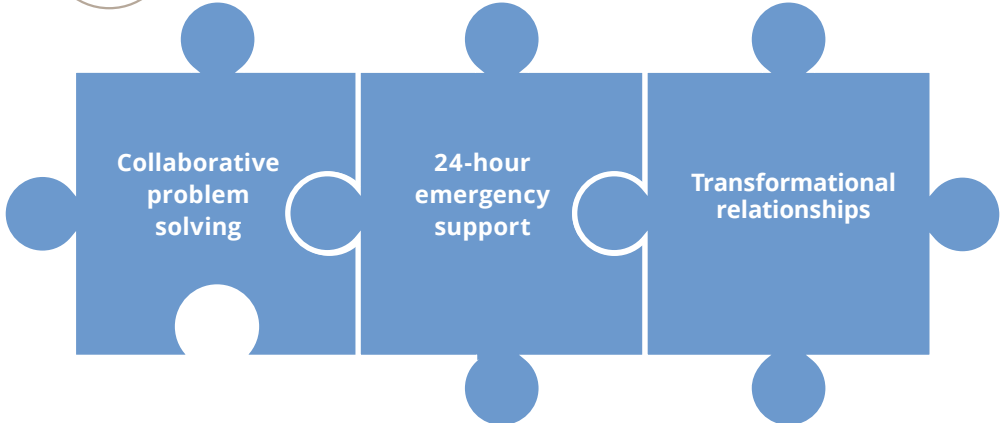
J'Saun (he/him), Wily Alum '21



A Scholar shares her resume with the team from **Boston Children's Hospital** at the Wily Career Fair



One-On-One Clinical Coaching



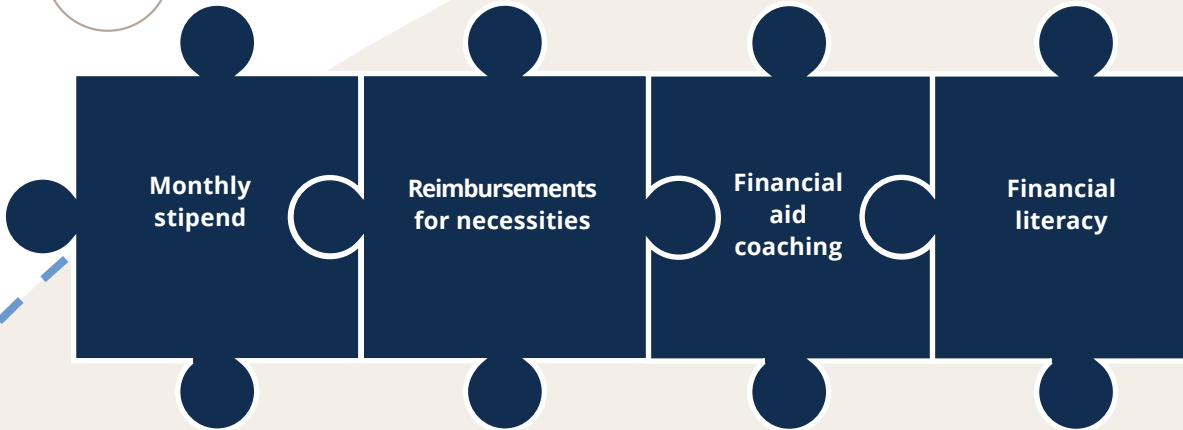
A Scholar chats with her coach, **Korie**, during Fall Community Day



Supplemental Financial Assistance



Krisbelle (center), Wily's Career and Financial Aid Coach, gets to know some Wily Scholars



Community Building & Networking





Clinical Coaching

Madjeen Lorthe, MEd, ICF-ACC*

Madjeen has been coaching Wily Scholars for **five years**. In that time, she's played a critical role in the journeys of **33** students and celebrated **12** graduations. We sat down with Madjeen to talk about what coaching means to her.

**Madjeen is an Associate Certified Coach with the International Coaching Federation*



Madjeen spends time with one of the Wily Scholars she coaches at our 2023 Fall Community Day

What does it mean to be a coach at Wily?

Coaching is about building relationships, and that relationship-building looks different with every single Scholar. It's about giving space for each student to come to their own insights and awareness. To discover what skills they need to build, what information they need.

How does your clinical training help you in your coaching?

Wily Scholars have navigated so many different relationships already: biological relationships, relationships with systems, relationships with people in the helping profession. So they have that antenna up to feel out your energy. They are ready to manage your reactions and your emotions.

That's where having the clinical experience that coaches bring, and being trauma-informed, is so important. The coaching relationship is there to center Scholars and their mental well-being. There are certain traumas that



Madjeen poses at our 2019 Fall Community Day with four of the first Scholars she worked with at Wily

some Scholars have experienced. If you as a coach don't have enough experience, you can have a reaction that's not helpful to the Scholar. And then the Scholar might end up taking care of you, rather than you being in the coaching role.

Our training helps us create a space where Scholars can come in as their whole selves. They can feel seen, heard, and validated, without feeling like they have to take care of us.

Why are you passionate about being a Clinical Coach?

At Wily, you are working with students who are in this phase of life where there's so much potential. In some ways, they arrive already bringing so much fullness and knowledge, but there's also still so much left for them to experience.

It's such a beautiful time to be invited into their lives, to see just how they're thinking about the decisions that they're making, what brings them joy. I just find conversations with them so enriching. I walk away with so much value and insight into how to be as a human in this world.



Madjeen celebrates two of those same Scholars' graduations in 2022

Finding a Fit: Wily Scholars and Career Opportunities

Wily Scholars got to college by being **talented, independent, hardworking** and **driven**. Companies in every industry are seeking the qualities they bring to the table, but sometimes the perfect match never gets made. Companies often rely on referrals to fill their open positions, and Wily Scholars do not have the connections that many of their peers benefit from.

Wily's Career Fair is designed to put those two pieces of the puzzle together: talented young professionals—and companies who understand the value they bring to a team.

BlueWave attended our Career Fair for the first time in 2023. They sponsored the event, sent representatives to network with students, and ended up hiring a Wily Scholar!



Melanie chats with Kat and the rest of the BlueWave team

Add your piece to the puzzle:

We are always looking for companies to sponsor and attend our Career Fair. Reach out to Judi Alperin King at judi@thewilynnetwork.org.



One of the Wily Network students, Melanie, joined BlueWave as a co-op this past January! We would not have met without the career fair. Thank you for the work you do! BlueWave looks forward to working with the Wily Network again in the future.

Kat Himmelberger (she/her)
BlueWave



I feel very grateful to have had the opportunity to talk to the companies at the fair, because other people may have family members who could have helped them get that same opportunity. I don't, so it's harder for me, but at least I have Wily who helped me get that same opportunity.

Melanie (she/they)
Northeastern University '23

Company Attendees

- 47 Brand
- Audax Group
- BellXcel
- BJ's
- BlueWave
- Bridge Independent Living Together, Inc (BILT)
- Boston Children's Hospital
- Boston Red Sox
- CarGurus
- Ceres
- City of Boston Office of Human Services
- City of Boston Office of Neighborhood Services
- EF Education First
- Ernst + Young
- Harvard Business Publishing (HBP)
- Harvard University
- Hercules Capital
- InsideTracker
- K&L Gates, LLP
- Leadership Brainery
- Mass General Brigham
- MFS Investment Management
- Museum of Science
- Neighborhood House Charter School
- Safety Partners Inc.
- Sasaki
- The TJX Companies, Inc
- Trivium Interactive
- We Got Us

Career Fair Sponsors

- BlueWave
- Dedham Savings Community Foundation



We are so grateful for our Career Fair Volunteer Coordinator, **Mary Beth Lisman**. Thank you for all your hard work again this year in making this a successful event for Wily Scholars!

Three Wily alums attended with their companies: **Bilal** '22 from **Trivium Interactive**, **Rachel** '20 from **Ceres** and **Eric** '19 from the **City of Boston Office of Neighborhood Services**. We always invite Wily alums to attend all of our community events, and we were delighted to see **Tikia** '21 take advantage of this networking opportunity.



Connecting with Wily alums who are now positioned at these companies made me feel so comfortable and welcome, knowing someone like me could be at such a good company.

Wily Scholar, Northeastern University

You Complete the Puzzle

Fiscal Year 2023 Financials

In 2023, more than 500 friends, neighbors, companies, charitable foundations and nonprofits made gifts in support of Wily Scholars. Together, we reached our fundraising goals and provided support to 103 Scholars over the course of the year.



Whether it's help with academics, internships, housing or health and well-being, it really amazed me that Wily can care about you in all these different domains and be right there beside you as you're advocating for yourself.

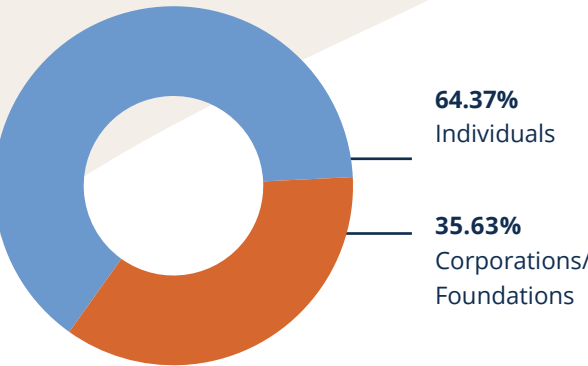
David (he/they), Massachusetts Institute of Technology '23



Scholars spend time with their coach, **Zubin**, at Fall Community Day

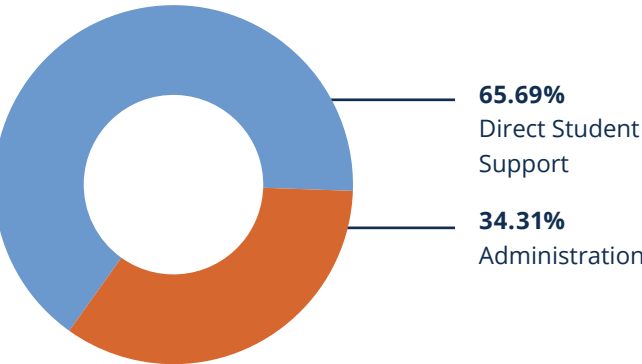
2023 Revenue

Individuals	\$1,700,237
Corporations/Foundation	\$941,132
Total	\$2,641,369



2023 Expenses

Direct Student Support	\$1,447,805
Administration	\$756,131
Total	\$2,203,936



All financial statistics for 2023 are unaudited. If you would like to request a copy of the full, audited financial statements in July of 2024, please email Ashley Linell at ashley@thewilynetwork.org.

Appreciating Generosity

Wily Partners

We are honored to recognize our Wily Partners: those who contribute \$1,000 or more to the Wily Network during the fiscal year. We are truly grateful for the tremendous contribution that Wily Partners make to our program. Your generosity keeps our program running so we can be there for Scholars from freshman year through graduation.

\$100,000+

Katie and Don Bramley*
David Fromm
Ilene Beal Charitable Foundation*
The Phyllis & Jerome Lyle Rappaport Foundation
Stevie and David Spina*

\$99,999-\$50,000

Carole Remick Charitable Foundation
Charles Hayden Foundation
Cummings Foundation
Diane T. Coulopoulos Giving Fund
Frieze Family Foundation
J.E. & Z.B. Butler Foundation*
Lloyd G. Balfour Foundation
Kim and Greg Pappas*
Judi and Bill Rosensweig*
Thompson Family Foundation
Wellington Management Foundation
Robin and Marc Wolpow*
Debbi and Michael Young*

\$49,999-\$25,000

The Boston Foundation
Nevin and Kristine Chitkara*

Katherine DePasquale and Rodolfo Chaparro
Further Forward Foundation*
Liberty Mutual Foundation
Rob and Donna Manning
Moderna Charitable Foundation
Kristin and Stephen Mugford
Gail and Jim Radley*
Hilary and Langley Steinert*

\$24,999-\$10,000

Patty and Mel Alperin*
Audax Charitable Foundation
Bain Capital Children's Charity*
Ann and Arthur Barrett
The Baupost Group
BlueWave
Crocker Philanthropic Foundation Fund
Helena D'Angelo*
Cindy and Jim Duffy
Carolyn Durand
The Equality Fund at the Boston Foundation
Liz and Art Greenwood*
Ed and Barbara Hajim
Hope and David Hirsch
Lisa Howe and Stephen Kaufer*

The Jack Tarver Family Foundation
Anne and Mark Kelley*
Larry Lavine
Cynthia and Seth Lawry
Renee Levin and Larry Jacobson*
Life Science Cares
Zach and Laurel Martin*
Brooke and Will Muggia
Michele Norman and Steve Loose*
Susan and Chris Pappas
Kathy and Bill Parent*
Ned and Lisa Parsons*
Dianne Pink and J. Roy Pottle*
Rockland Trust Charitable Foundation
Roy A. Hunt Foundation
Barbara and Arthur Simons*
Michael Simons*
St. Jean Family*
Scott and Ursula Steele*
Cate and Andy Waldeck
Westfield Capital Management
Natalie and Rod Wright*

\$9,999-\$5,000

Anonymous (1)
Kathy and Mark Alperin*
Mimi and Barry Alperin*
Boyle Family
Heidi Buonanno and Bernie Buonanno III
Bushrod H. Campbell and Adah F. Hall Charity Fund
Robin and Ted Clark
Joy and Mark Denomme*
Eastern Bank Foundation
Jennifer and Bob Ewing*

Linda and Mark Griffin
Allison and Andrew Hirsch*
Jason Hayes Foundation*
Lizanne and John Kenney
Mary Beth and Eric Lisman
Cara and Arthur Maxwell*
Mildred's Dream Foundation
Plymouth Rock Assurance Foundation
Kris Schaefer and Lisa Chapnick*
Sumitomo Pharma America
TJX Foundation

\$4,999-\$2,500

Barrios Committee
Elizabeth and Stephen Clarke
Commonwealth Cares
Dedham Savings Community Foundation
Deanna and Tony DiNovi
Mark DiVincenzo and Terry McGowan*
Michael Douvarjian
Lee and Peter Frechette
The Fuller Foundation
Kathleen and Rob Ix
James Campbell Rhind Fund at The Chicago Community Foundation
Wilma and Howard Kaye
Judi and Tim King*
Chris Montgomery
Morrison and Foerster Foundation
Patton Family
The Red Sox Foundation
Jamie and Nicole Rhind
Daphne Van de Meerssche
Suzanne and David Wakefield*

Please Note: Every effort has been made to ensure that these lists of donors are accurate and complete. If your name has been inadvertently omitted or is listed incorrectly, please accept our apologies and notify Harshini Senthil, Development Coordinator (harshini@thewilynetwork.org).

*Five years of consecutive giving

Appreciating Generosity

\$2,499-\$1,000

- Anonymous (2)

Melissa Akopiantz

Mickey Alperin

Ruth and Jeff Barker*

Nikki and Marshall Bartlett

Corinne Basler*

Elissa Birke and Shawn Fitzgibbon*

Donna Bonaparte

Donna and Joe Bovi

Joanne and Tim Burke
- Linda Cabot and Ed Anderson*

Aimee Cardwell

Tara and Greg Ciongoli

Trinita Conway

Janet and Steve Correia*

Hanley Cox*

Dana and Stuart Davies*

Dedham Women's Exchange

Nancy and Arthur Feibus*

Francisca Fenton

Beth Kressley Goldstein and Dennis Goldstein

- Andrea and John Ham

Emily Helm

Mike and Parrisa Julian*

Jeff Keselman

Vicki and Norty Knox

Hannah Lawry

Ellie and Philip Loughlin

Massachusetts Association of Student Financial Aid Administrators

Laura McTaggart and Tom Nolan

Lisa Miller*

Moderna

Aletta and Chris Mutz

Natixis Investment Managers

- Janet and Jimmy Neissa

Lisa and Benjamin Procter

Pat Profeta and Rob Aranow*

Caroline and David Ryan

Dan Ryan

Sue and Ted Saraceno

Lisa and Garz Soule

Stifler Family Foundation

Janet Tiampo and David Parker

Town Fair Tire

Lynda Voghel

Ellen and Bob Volpe*

Leann and Brian Walsh*

Jane Yusen

Fund-A-Scholar

By contributing the average cost of our program for a Wily Scholar, Fund-A-Scholar donors make a transformative impact. We are pleased to recognize Fund-A-Scholar donors, who help us ensure Scholars have access to all the pieces they need as they navigate college.

- Patty and Mel Alperin*

Ann and Arthur Barrett

The Baupost Group

Katie and Don Bramley*

Carole Remick

Charitable Foundation

Nevin and Kristine Chitkara*

Helena D'Angelo*

Katherine DePasquale and Rodolfo Chaparro

Cindy and Jim Duffy

Carolyn Durand

Further Forward Foundation*

Liz and Art Greenwood*

Linda and Mark Griffin

Ed and Barbara Hajim

Hope and David Hirsch
- Lisa Howe and Stephen Kaufer*

Anne and Mark Kelley*

Cynthia and Seth Lawry

Renee Levin and Larry Jacobson*

Zach and Laurel Martin*

Kristin and Stephen Mugford

Brooke and Will Muggia

Michele Norman and Steve Loose*

Kim and Greg Pappas*

Susan and Chris Pappas

Kathy and Bill Parent*

The Phyllis & Jerome Lyle Rappaport Foundation

Dianne Pink and J. Roy Pottle*

Gail and Jim Radley*

- Judi and Bill Rosensweig*

Barbara and Arthur Simons*

Michael Simons*

Stevie and David Spina*

St. Jean Family*

Scott and Ursula Steele*

Hilary and Langley Steinert*

- Thompson Family Foundation

Cate and Andy Waldeck

Westfield Capital Management

Robin and Marc Wolpow*

Debbi and Michael Young*

The Wily Network Student Assistance Fund at Middlebury College

- Katie and Don Bramley*

Jennifer and Paul Walker
- Natalie and Rod Wright*

Wily Sustainers

One of Wily's core values is that we are committed to the long-term. We are pleased to recognize Wily Sustainers, whose multi-year pledges enable us to live out that core value. Your consistent generosity ensures that we can keep the commitment we make to each Wily Scholar year after year.

- Audax Charitable Foundation

The Boston Foundation

Cummings Foundation

Diane T. Coulopoulos

Giving Fund
- The Jack Tarver Family Foundation

Liberty Mutual Foundation

Rockland Trust Charitable Foundation

*Five years of consecutive giving

As a college student, Wily alum **Treasure** co-founded the Harvard Black Arts Collective.

In April, Treasure returned to Harvard's campus to executive produce and moderate *In The Shadow of Giants: A Commemorative Evening of Black Contemporary Art*. Judi had the honor of participating in the beautiful event!



Judi and Treasure at the Harvard Black Arts Collective event



I met the Wily Network through my volunteer role with the **Cummings Foundation**. Why I think so highly of Wily: the incredible energy in the room when we met, including students, staff and board members; the importance of the work saving lives one extraordinary person at a time; and the deeply thoughtful model that combines what volunteers do well with professional coaching.

Linda L. Snyder (she/her), Cummings Site Visit Committee



A Wily alum celebrates with coach Nathalia for a graduation photoshoot



Scholars learn about paths to graduate school from a guest speaker from Leadership Brainery

Appreciating Generosity

Friends of Wily

Gifts of every amount make a difference for Wily Scholars and our growing community, the Wily Pack. We are proud to recognize all Friends of Wily for their partnership and generosity.

Anonymous (11)
Anna and Tony Abate
Carol Abram
Hila and Zoltan Antal
Eleanor Weller Antonietti
Audax Group
Auli and Ken Batts
Kathleen and Kevin Beam
Denise and Tom Beaudoin
Holly and Chris Bernene
Susan Berry
Judith and Paul Beswick
Nikki and Ken Bettenhauser
Daniel and Shimrit Black
Lisa Blizzard
Kristine and Craig Bloomer*
Laura Bloomer*
Martha and Jeff Blue
Boeing
Ilana Bornstein
June and Michael Bramley*
Michael Bramley*
Kathy Brennan and Gerald Cianciolo*
Janelle Bridson
Tanya and Guy Broadbent
Laura Broffman and Guillermo Narváez Paliza*
Sarah and Bob Bua
Alan Buck
Helen Buck*

Sharon Burke
Susan Campbell
Sarah Carroll
Lisa and Dan Casey
Chevron
Ellen Pinkos Cobb*
Harry Cohen
Kathleen and Scott Cohen
Sheri Cohen
Jodi and Daniel Cooper*
Stephen Rodenhiser
Austin and Caroline Crouse
CTC Trading Group LLC
Cummings Properties LLC
Kathy and Bob Cunha*
Susan and Bob Curtin
Elizabeth Dawson
Brit Dewey and Phil Tinmouth
Casey Dimascio
Lauren Doherty
Linda Dombrowsky
CC Donelan
Dawn and Mark Donovan
Louise Donovan
Nancy and Bill Doyle
Betsy and Rick Edie
Andrea Edwards
Edmond Eger
Renee Eger

*Five years of consecutive giving

There is nothing we look forward to more than a Wily Network Community Day. We had our largest turnout to date at our 2023 Fall Community Day, as we welcomed new students and caught up with returning Scholars over games and a meal. We are so grateful for the opportunity to spend intentional time with one another and deepen the Wily Pack’s connections.



Wily Scholars gather at Fall Community Day

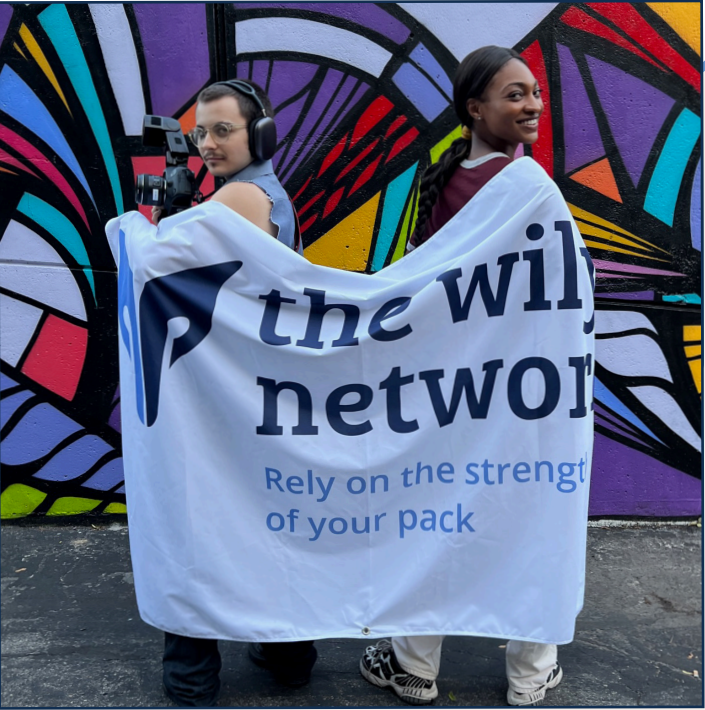


Two Scholars work on a spaghetti-and-marshmallow building competition at Fall Community Day

Michelle Liberman Eisenberg
and Adam Eisenberg
Anne and Jeff Elton
Erin and Mark Epker
Carly Euler
Katherine and Robert Eyre
Lisa Falso
Sheila and Bob Flory
Leigh Forbed
Jennifer and Anthony Fortunato*
Lauren Fragoza
David Franklin
Jill and Tom French
Victor Gamberoni
Robyn and Dale Garth*
Ann Gillespie and Bob Nuzzo*
Kelly and Michael Glew
Sophia Glickman
Hilary Glynn
Sharon Grossman
Susan Hall
Michelle Harris
Carolyn and Eric Harthun
Maureen and Rob Hayes
Gina and Dave Heaney
Hearthstone Foundation
Alyson Hedgepeth
Laura Hewitt
Georgia Hiller
Gemma and Richard Hogan
Megan and Chris Holding*
Leslie Householder
Brenda and Jim Hsu*
Dave and Lydia Icke
Inspire Brands Foundation
Rebecca Ivey
Sufia Jamal
Ingrid and Dale Janes
Sarah Janes
Heather Johnson
Jones Lang Lasalle
Cheryle and Jim Joyce
Megan Kelly
Ellen King*

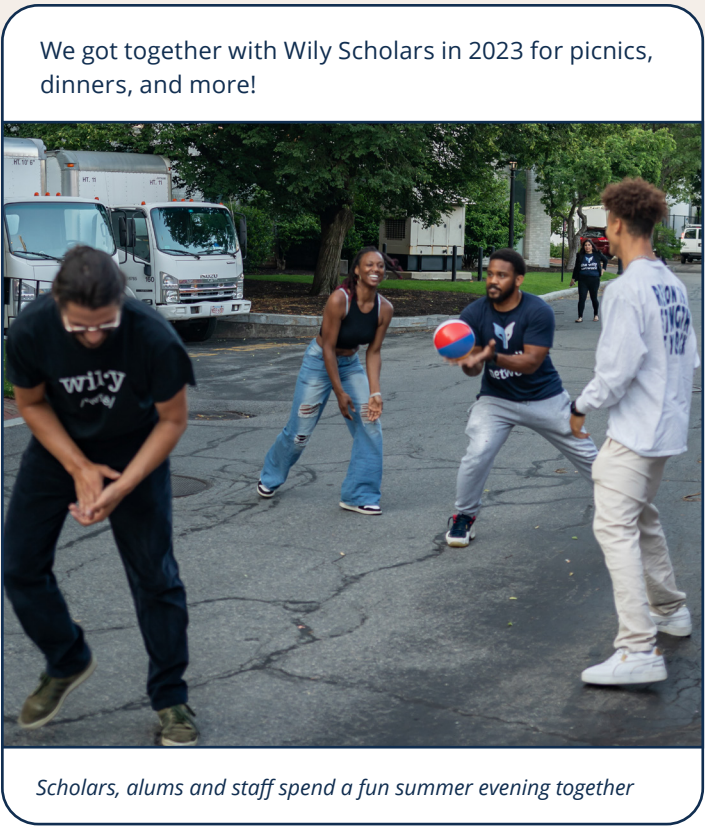
Barbara and Tom Kohler
Natalie Krause and Alex Mukherjee
Matthew Kyller
Karen and Howard Lapsley
Sarah Larson
Cindy and Bob Laughrea
Mary and Ben Leder
Sharon Levy
Madeline and Mark Lewis*
Margaret Lewis and Dan Glotzbach
Rich Li
Roanne and Richard Licht
Kathleen Lindberg
Ashley and John Linell*
Rose and Bill Lovejoy
MA & Northern New England Laborers
Ruth Mallett
Gail Mann
Ellen and Dick Mazow
Karen McHaffie
Dr. Julie Medley
Marjorie Merisier
Tracilee Messina
Jenn Metz
Cathleen Miller
Sara Miller Blanc and Jonathan Blanc*
Alison and Bill Monaghan
Meredith Monaghan
Annie Montesano and Dan Scheibe
Bobby and Jeff Morgenstern
Michele Nathan
Audrey and George Nichols
Linda and Fred Nitschelm
George Noyes
Laura and Matt Olton
Jennifer and Chris Pachus
Margie Palladino
Caren and Randy Parker
Carole and R. Wayne Parrish
Tracy Parsons
Heidi and Lewis Pearlson

Wily Scholars and alums spend a summer evening together taking pictures for Wily, courtesy of **Bentonio**, a photographer and a Wily Scholar. He was assisted by **Treasure**, an art director and a Wily alum.



Appreciating Generosity

- Pega
Bernie Pekala
Emily and Mike Pelton
Jane and George Pelz
Janine and Bob Penfield*
Antonia and Pat Perry
Sharisse Cail Perry
and Steven Perry
Ann Peterson
Anthony Picchione
Tas Pinther
Allison Provost
Jennifer Reardon
Judi and Jack Remondi
- Jill Rizzotti
Jay Robie
Rachel Rock and Josh Levy
Rockland Trust
Fiona Roman
Helen Rosenfeld and
Asheesh Advani
Carol Rosensweig and
Charlene Grant
Lyn Rosensweig and
Bruce Schnelwar
Ann and Sam Rossino
Mimi Deck and Tom Rutledge
Katrina Ryan



*Five years of consecutive giving

- Kristin Ryan
Heidi and Jason Saghir
Julie and Robert Salomon
Cristine Santo and
Joe Panepinto
Kathryn Sargent and
Chris Wilson
Hannah Saris
Judi Seldin
Virginia Shannon
Barbie and Mark
Shaughnessy
Carolyn and Sean
Shaughnessy
Jacqueline Shoback and
Andrew Bernstein
Linda and Richard
Silverman*
Mason Smith and
Gordon Green
Bridget Snell
Linda Snyder and
Steve Kadish
Eileen and Robert Spellman
Kippy Steeves
Anton Steinhart
Lynda Sullivan
Donna and Scott Swanson
Temple Beth-El
Tinder
- Amy and Dave Tormey
John Tormey
Mike Tormey
Linda Towne
Gretchen Troiano
Tracey Turco
United Health Group
Peggy and Don Van Slochem
Mariela Paez Vega
and Miguel Vega
Jennifer and Paul Walker
Constance Walkingshaw
Wayfair
David Webster
Wellington Management
Company
Gregory Whitehead
Susan Whitehead
Pam Willsey
Willsey Connections
Wine for Humanity
Ellie and Mark Winthrop*
Nick Wittemen
Pamela Casey Wohl
Deb Yanofsky and
Steve Shulman
Natalie and Jonny Yaollen
Yield Giving
Leo Young
Heidi Ziobro



Honor and Memory Gifts

Donor	In Honor of
Anonymous	Susan Goldscheid
Carol Abram	Renee Eger
June and Michael Bramley	Donald Bramley
June and Michael Bramley	Katie Bramley
Sarah and Bob Bua	Alex and Charlie Denomme
Helen Buck	Amy and Dave Tormey
Helen Buck	Renee Eger
Lisa and Dan Casey	Sharon Alphas
Crocker Philanthropic Foundation Fund	Laura McTaggart and Tom Nolan
CTC Trading Group LLC	Daniel Glotzbach
Susan and Bob Curtin	Judi Alperin King
Linda Dombrowsky	Charlene Grant
Carolyn Durand	Katie and Don Bramley
Edmond Eger	Renee Eger
Leslie Householder	Hanley Cox
James Campbell Rhind Fund at The Chicago Community Foundation	Nicole Susan Rhind and Tyler Matthew Rhind
Ingrid and Dale Janes	Sarah Janes Bien
Heather Johnson	Alex and Charlie Denomme
Judi King	Sara Miller
Barbara and Tom Kohler	Bonnie Yezukevich
Madeline and Mark Lewis	Margaret Rose Lewis
Ashley and John Linell	Sally McOsker
Ellen and Dick Mazow	Julie King
Bobby and Jeff Morgenstern	Don Bramley
Laura and Matt Olton	Katie Bramley
Lyn Rosensweig and Bruce Schnelwar	Charlene Grant
Ellie and Mark Winthrop	Kim and Greg Pappas

Donor	In Memory of
Cheryle and Jim Joyce	Edana Sofia (Joyce) Benesch
Dr. Julie Medley	Nadine



Since joining Wily, it is easier to ask for help...
I experience less shame, and instead playfully laugh.

Kim (they/them), Middlebury College '24



In Honor of Melanie Mace's Birthday

- Anonymous (2)
Anna and Tony Abate
Kathy and Mark Alperin
Kathleen and Kevin Beam
Denise and Tom Beaudoin
Susan Berry
Lisa Blizard
Elizabeth and Stephen Clarke
Elizabeth Dawson
Lauren Doherty
Dawn and Mark Donovan
Louise Donovan
Jill and Tom French
Carolyn and Eric Harthun
Alyson Hedgepeth
Laura Hewitt
Gemma and Richard Hogan
- Rececca Ivey
Roanne and Richard Licht
Ruth Mallett
Gail Mann
Jenn Metz
Margie Palladino
Caren and Randy Parker
Rockland Trust
Fiona Roman
Katrina Ryan
Eileen and Robert Spellman
Kippy Steeves
Gretchen Troiano
Tracey Turco
Constance Walkingshaw
Pamela Casey Wohl

In Honor of Amy Tormey's Birthday

- Carol Abram
Alan Buck
Andrea Edwards
Lisa Falso
Sharon Grossman
- Sharon Levy
Kathleen Lindberg
Lynda Sullivan
John Tormey
Mike Tormey

Appreciating Generosity

Corporations and Foundations

- Audax Charitable Foundation

Bain Capital Children's Charity*

The Baupost Group

BlueWave

The Boston Foundation

Bushrod H. Campbell and Adah F. Hall Charity Fund

Carole Remick Charitable Foundation

Charles Hayden Foundation

Commonwealth Cares

Crocker Philanthropic Foundation Fund

Cummings Foundation

Dedham Savings Community Foundation

Dedham Women's Exchange

Eastern Bank Foundation

The Equality Fund at the Boston Foundation

Frieze Family Foundation

The Fuller Foundation

Further Forward Foundation*

Hearthstone Foundation

Ilene Beal Charitable Foundation*

J.E. & Z.B. Butler Foundation*

The Jack Tarver Family Foundation

James Campbell Rhind Fund at The Chicago Community Foundation

Jason Hayes Foundation*

Liberty Mutual Foundation

Life Science Cares
- Lloyd G. Balfour Foundation

MA & Northern New England Laborers

Massachusetts Association of Student Financial Aid Administrators

Mildred's Dream Foundation

Moderna Charitable Foundation

Morrison and Foerster Foundation

The Phyllis & Jerome Lyle Rappaport Foundation

Plymouth Rock Assurance Foundation

The Red Sox Foundation

Rockland Trust Charitable Foundation

Roy A. Hunt Foundation

Stifler Family Foundation

Sumitomo Pharma America

Temple Beth-El

Thompson Family Foundation

TJX Foundation

Town Fair Tire

Wellington Management Foundation

Westfield Capital Management

Willsey Connections

Wine for Humanity

Yield Giving



As a first-generation, disabled and low-income student, navigating college independently has been a challenging experience. However, having access to a program like Wily has brought me so much ease in facing these difficulties.

Wily Scholar

Matching Gifts

- Audax Group

Boeing

Chevron

CTC Trading Group LLC

Cummings Properties LLC

Inspire Brands Foundation

Jones Lang Lasalle

Moderna
- Natixis Investment Managers

Pega

Rockland Trust

Tinder

United Health Group

Wayfair

Wellington Management Company



Our team gets a private tour of the Portraits in Pride exhibit from Creative Director and Wily partner **Jean Dolin**.

In Kind Donors

From birthday gifts to free medical services, our in-kind donors make sure that Scholars have access to everything they need to thrive in school. Thank you to our community partners, volunteers and pro bono providers for being there for Wily Scholars in 2023.

Care Packages

Welcome Back Care Packages

- Arthur Barrett, Chair

Barrett Distribution Centers

Bethany Falero

Rich Li

Winter Exams Care Packages

- Robin Barton

Diane Bettencourt

Erica Bowden

Megan Burns

Adrianne Canning

Lisa Capone

Susan Carvalho

Miranda Chapman

Kristine Chitkara

Elizabeth and Stephen Clarke

Katherine Cochran

Joy Denomme, Chair

Heidi Emerson

Erin Epker, Chair

Erica Gelser

Carolyn Glass

Hilary Glynn

Becky Hamlin

Kristina Hatem

Gina and Dave Heaney, Chairs

Megan Holding

Barbara Horan

Ann Hunnewell

- Jennifer Jordan

Becky King

Ashley Linell

Lisa Lynch

Tracy Mahan

Elaine Mann

Jen Martin

Cam McCormick

Iois Mizzi

Michelle Moran

Elizabeth Ohashi

Caren and Randy Parker

Sharisse Cail Perry, Chair

Jennifer Sawyer

Heather Schaefer

Maryann Smith

Lynda Sperry

St. Andrew's Episcopal Church

Tessera Therapeutics

Michael Vanin

Ellen Volpe, Chair

Catherine Walkey

Valentine's Day Care Packages

- Kate and Mike Ascione, Chairs

Britt Bardinelli

Rachel Benson

Camille Carlstrom

Jeremi Carswell

Marybeth Chung

Gretchen Covino

Jess Deede

Caroline Del Col

Camille DeStefano

- Gabe and Joe Dunn, Chairs

Debbie Ferguson

Susan Flanagan-Cahill

Greta Fruhan

Aasma Gilani

Jen Goldberg

Hercules Capital

Sheila and Matt Hiatt

Allison Hirsch, Chair

Vicky Joshi

Audrey Kantaros

Chris Ketcham

Maddie Koehler

Jane Parkin Kullman, Chair

Aiko Laski

Ellie Loughlin

Priya Manasseh

Betsy Martel, Chair

Trish and Mike Mordas

National Charity League

Hillary Price

Dianna Reza

The Rivers School

Denise Rousell

Caitlin and Stu Salyer

Leslie Schutte

Kim Stokes

Sari Tower

Marcia Walsh, Chair

Katherine Wee

Kristen Whitaker

Women of Dartmouth

Spring Exams Care Packages

- Joy Denomme, Chair

Kristan Gately, Chair

Thayer Academy

Cate and Andy Waldeck

Graduation Care Packages

- Audax Charitable Foundation

Gina and Dave Heaney

Lizanne and John Kenney

- Becky King

Mary Beth and Eric Lisman

Kathy and Bill Parent

Tricia and Chris Schade

Allison Sobel, Chair

Calista Thompson

Goods

- Anonymous (1)

Abuzz

Susan Porter

Barrett Distribution Centers

Arthur Barrett

Celsius Therapeutics

Clarke Distribution

Mike Fotiades

Conroy Family

DCU for Kids

Maureen Spaulding

Carly Euler

Diane Genereux

Lynn Girtton

Terrie and David Hallal

Hope & Comfort

Kerry Carter

Sarah Janes

Emma Kaplan

Cindy Kropp

Mary Beth and Eric Lisman

The Local Kitchen & Drinks

Tricia and Tom Wynn

Ruby Macsai-Goren

Cara and Arthur Maxwell

MFS Investment Management

National Charity League

Laura Parker

Caroline and David Ryan

Tessera Therapeutics

The Winsor School

Appreciating Generosity

Gift Giving

Laura Anderson
The Baupost Group
Donna and Joe Bovi
Stacy and Woody Bradford
Maureen Bryan
Trisha Bunce
Katie and Craig Carswell
Jen and Rich Carter
Kerry Carter
Sheri Cohen
Deborah Collum
Alida Coe-Kendall and
Michael Kendall
Jennifer Couture and
Stephen Rodenhiser
Laurie Crist
CC Donelan
Nancy and Bill Doyle
Amy and Billy Drucker
Cindy and Jim Duffy
Betsy and Rick Edie
Joe Emerson
Erin and Mark Epker
Valerie Finnemeyer
Frenkel-Popell Family
FutureFour Consulting
Diane Genereux
Chris Gerndt
Linda and Mark Griffin
Terrie and David Hallal
Monique and Will
Medici Halleck
Geoff Harlan
Cheryl and Steve Haynes
Gina and Dave Heaney
May and John Herr
Lizanne and John Kenney
Becky King

Liza and John Knapp
Cindy and Bob Laughrea
Kelley Laurel and
Dan Brownell
Mary Beth and Eric Lisman
Lisa and Tom Lynch
Lisa Maclean
Michelle and Neil MacLellan
Amy Martin
Cara and Arthur Maxwell
Anne McGrath
Eileen McLaughlin
Michelle Meal
Meredith Monaghan
Andrew Muggia
Annie Muggia
Brooke and Will Muggia
Caroline Muggia
Henry Muggia
Michele Nathan
Michele Norman
and Steve Loose
Katie Oakes and
Vahid Ownjazayeri
Kathy and Bill Parent
Laura Parker
Patton Family
Betsy and Mark Reale
Judi and Jack Remondi
Rachel Rock and Josh Levy
Nancy and Larry Rowe
Caroline and David Ryan
Cristine Santo and
Joe Panepinto
Aimee and Scott Sawyer
Tricia and Chris Schade
Bonnie Sherman
Melissa and Allen Smith
St. Jean Family
Hilary and Langley Steinert



Growing up, no one taught me how to save money or how to invest it. I was only taught to earn money from a job. The financial experts showed people like me that the very tools we need to save money are around us.

Wily Alum, Bridgewater State University

In 2022, Wily Scholars loved the three financial literacy seminars led by volunteers from **CFA Society Boston**. We were lucky enough to welcome them back in March to share more tips and advice with Scholars and alums about budgeting, credit cards and borrowing, and personal investing!



CFA Society Boston volunteers **Aileen Barbiellini Amidei** and **Akshay Anand** meet virtually with Wily Scholars

Donna and Scott Swanson
Calista Thompson
Shanna Trufan
Cate and Andy Waldeck
Kim West
Robin and Marc Wolpow
Natalie and Rod Wright

Professional Services

Aileen Barbiellini Amidei
CFA Society of Boston
Amanda Armstrong
Rise As We
Jami Axelrod
Zan Barry
Amy Collier
Aram Elovic
Elovic Dental

Becky Pechenik Elovic
Elovic Dental
Danielle Frankel
Ripple Effect Consulting
Jeffrey Kublin
ProOptical
Michael Macrides
Hercules Press
Dan Mutty
Atlum Marketing
Nicole O'Connor and
Eric Leone
Sevenpair Studios
Kathleen Parker
K & L Gates
Kris Schaefer
Amy Tormey
Charleston Consulting Group

Some of our best connections come from Wily Scholars. When recent grad **Hansali** did a summer internship with **Harvard Business Publishing**, she knew all Scholars could benefit from their team's insight.

Hansali coordinated a lunch and learn, where Wily Scholars were invited to chat with representatives from HBP's various employee resource groups for people of color, people with LGBTQIA+ identities and people living with different abilities. HBP staff also reviewed Scholars' resumes in preparation for the Wily Career Fair—which HBP attended!



Wily partners with local colleges in a variety of ways. This year, three Wily staff members and a Wily Scholar visited the **Massachusetts Institute of Technology's** Financial Aid office to share what we do and strengthen our relationship with their team.



Young Professionals Association

Nana Boakye-Mensah
Niki Bramley,
Membership Chair
Janelle Bridson
Laura Broffman,
Staff Representative
James Carroll
Patrick Carroll
Hailey Cherepon
Carly Euler
Natalie Figueroa
Morgen Gallagher
Sarah Janes
Samantha King
Ila Kumar
Josie Linell
Ruby Macsai-Goren
Sara Miller Blanc,
Board Representative
Sammi Reinstein

Kevin Richardson, Co-chair
Karine Sevyen, Co-chair
Alina Tang
Joseph Urena
Rachelle Walker
Farrell Eldrian Wu
Kelsey Young
Leo Young

Turning the Tables Hosts

Cynthia and Seth Lawry
Melanie Mace
Michelle Norman
and Steve Loose
Karine Sevyen
Amy Tormey
Leann Walsh
Natalie Wright

Appreciating Generosity

Thank you to the following board members who we said goodbye to in 2023. Each one of these former board members has contributed crucial pieces to Wily's puzzle.

listening

problem
solving

insight

connection

analysis

foresight

Tara Hendricks (she/her)



Over the last four years, Tara helped us analyze and manage some of the most complex aspects of the Wily puzzle. Thoughtful, considerate and able to help us build awareness of many perspectives, Tara stewarded Wily through many pivotal moments in our development.

Michael Julian (he/him)



As a founding board member, Michael has been a teacher to all of us. He was a guiding voice in deepening the board's understanding of the students we serve. His grace and insight has been a gift as he made connections with everyone, especially with Scholars. We are excited to continue to learn from Michael as he transitions to Wily's **Advisory Council**.

Ryan Kim (he/him)



Ryan came to Wily through Community Action Partners (CAP). He helped Wily to expand our thinking around fundraising and communication to include goals for college alumni. He provided a new way of thinking, challenging us to move past the status quo.

Kim Pappas (she/her)



The founding chair of Wily's Advancement and Engagement Committee, Kim is a natural ambassador. During her tenure she brought more than 120 new supporters into the Wily Pack. It is our privilege to welcome Kim to the Wily Network's **Honorary Board**.

Andrew Rudzinski (he/him)



Andy arrived at Wily in 2016, just when we needed to implement financial systems. There was so much to be done, but nothing phased Andy. From designing financial systems to improving our data collection, Andy's natural instinct for problem solving has been critical.

Jennifer Schoen (she/her)



Having directed one of the nation's first campus-based programs for college students navigating life on their own, Jen's guidance was key. She has been here from the beginning to help sort through all the many pieces that came together to form Wily. She will continue to shepherd Wily as she moves to serve on the **Advisory Council**.

intuition

authenticity

connection

innovation

teaching

support

Shalona Williams (she/her)



As a Scholar Representative, Shalona's insight, thoughtfulness, and deep commitment to equity and inclusion made her a strong advocate for Wily Scholars. Her contributions helped deepen the board's understanding of why having a flexible and individualized program is valuable.

Ajani Wilson (he/him)



Ajani has been a dynamic, thought-provoking and active partner on the Wily Board. He took his assignment to represent Wily Scholars and Wily as a whole on the board seriously, sharing creative fundraising ideas and helping Wily staff better understand Scholars' relationships with colleges.

Heidi Ziobro (she/her)



As a Board Fellow, Heidi did not shy away from the complex and challenging conversations. She shared her professional experiences, guiding Wily's path forward. We are so grateful that Heidi stayed on for an additional year after her term on the board concluded.

Care Package Program

Every Wily Scholar receives a handmade care package for the beginning of the school year, Valentine’s Day, winter exams and spring exams. Plus, we always have “stress relief” care packages on hand for those times that Scholars need a pick-me-up, and seniors get both a graduation care package and a “next chapter” care package.

With 102 Scholars served this year, we collected **more than 500 care packages**. They come to Wily from individuals, classrooms, tech startups, and other organizations across the Boston area.



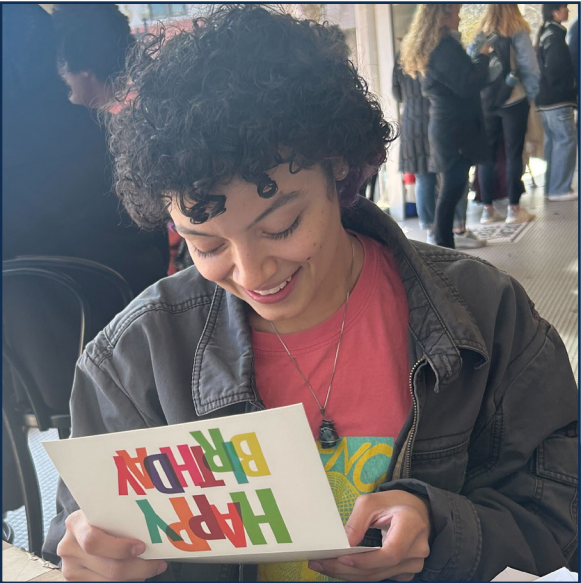
What’s in a care package? A typical care package includes:

- Gift cards
- Snacks and candy
- Basics like small sewing or first aid kits, Tide sticks, or extension cords
- Items that students might need restocked, like toothpaste, pens, or detergent
- Fun and creative items! Volunteers have filled care packages with faux plants, stress balls, and “encouragement jars” full of notes
- Handmade cards



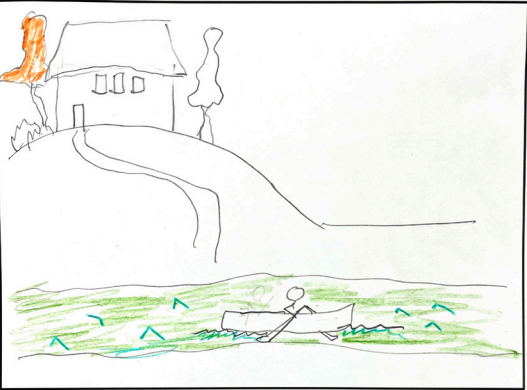
The gifts are great. But I really love the cards, because someone took the time and care to make them. I put them up on my wall.

Wily Scholar, Middlebury College



A Wily Scholar opens a birthday card from a volunteer

What I imagine college to be like:



My hope for you:
is to try something you have never done before

A card from a youth group member at **St. Andrew’s Episcopal Church** for a Wily Scholar’s care package

Welcome Back

This year, **Barrett Distribution Centers** made the largest single donation of care packages in Wily history—100 ‘Welcome Back’ care packages! We weren’t sure we’d have the space to store so many packages for the fall, so Barrett also stored them for us until coaches were ready to hand them out.



Scholars at Fall Community Day open care packages made by the team at **Barrett**



Final exam season comes twice a year, in the winter and the spring, and it’s always a good time for a pick-me-up. Coach **Susan** shares a care package with a Scholar getting ready to push through that final stretch.

Graduation

Wily’s graduation boxes, decorated to match each Scholar’s college, have been a tradition since our first graduations in 2018. Thank you to **Stacy Bradford, CC Donelan, Lizanne Kenney, Becky King, Mary Beth Lisman, Melissa Smith, Trish St. Jean**, and the team at **National Charity League** for making beautiful care packages for new Wily alums in 2023.



Volunteers for **National Charity League** work on a care package for a winter 2023 Northeastern graduate

Next Chapter

We continue working with Wily alums for three months after graduation, as they move from college to the next phase of their journey. In 2023, **Audax Group** helped us kick off that transition with ‘Next Chapter’ care packages, full of items young adults might need as they start careers or graduate school.



A Wily alum gets a ‘Next Chapter’ care package from Director of Development & Communications **Ashley**

Do you know of a group that might be interested in making care packages or gift bags for Wily Scholars?

Email Director of Development & Communications Ashley Linell at ashley@thewilynnetwork.org.



Contribute your piece to the puzzle



Dedicate an event to Wily

Wily Pack members have hosted cooking classes, gift card drives, Facebook fundraisers, book club meetings, birthday parties and more in support of Scholars. Wily can help you plan a creative, custom event that makes an impact.



Build a care package for a Scholar

Receiving a care package filled with snacks, supplies, gift cards and other treats reminds Scholars that there is a network of people out there rooting for them throughout the school year.



Become a Scholar's Gift Giver

It means a lot to receive personal gifts on your birthday and holidays. Become a Gift Giver to help a student celebrate the milestones along their journey through college.



Fill out our volunteer interest form



Board member **Don Bramley** brings Wily staff to share our work with his colleagues at **Audax Group** for the company's Day of Service



Once a part of the Pack, always a part of the Pack! Wily's former Development and Program Coordinator, **Gabe Dunn**, made Valentine's Day care packages for Wily Scholars.



Volunteers from the **National Charity League** wrap holiday gifts for Wily Scholars

Young Professionals Association

We owe a huge thank you to **James Carroll** and **Carly Euler** for two years of chairing the Wily Network's Young Professionals Association (YPA).

The YPA took off under James and Carly's leadership. From spearheading fundraising efforts like cooking classes and raffles, to supporting Scholars at the Career Fair and providing professional development opportunities for YPA members, they have created a strong program and robust calendar of events.

Next up, we are excited to welcome co-chairs **Kevin Richardson** and **Karine Sevyan**, who have already begun brainstorming ideas to take the YPA to the next level.



I can personally attest to the tremendous impact of a robust support system during and beyond college – mentors, sponsors and friends powered me through college, inspiring me to lead by serving others.



Kevin Richardson (he/him)
YPA Co-chair



I'm super excited to co-chair the Wily Network's Young Professionals Association and have the opportunity to make an impact in my community. I was once one of these students and wish I had an organization like Wily.



Karine Sevyan (she/her)
YPA Co-chair

2024 YPA Leadership Team

Kevin Richardson (he/him)
Co-chair

Nikki Bramley (she/her)
Membership Chair

Karine Sevyan (she/her)
Co-chair

Laura Broffman (she/her)
Staff Representative

Sara Miller Blanc (she/her)
Board Representative



YPA members—including new co-chairs **Karine** (center) and **Kevin** (right)—make cards for Wily alums



YPA members volunteer at the **Ilene Beal Scholar Speaker Series**



Learn more about joining the YPA

**Wily by the
numbers
throughout
2023**

One of the most meaningful ways you can make a difference for Wily is through financial support. Contributions of every amount help!

Scan our QR code or visit thewilynnetwork.org/donate to make a gift today. For information about gifts of stock or other securities, or to create a planned gift, please call 781-355-6527.

**Make a
tax-deductible
donation**



Scholars
(as of 12/31/23)

76



New Scholars

30



Graduates

17



"I have made
**meaningful
connections** with
other Wily Scholars"

78.4%

"My coach helped
me **stay in school**"

82.3%

Rate graduated
or on track to
graduate

91.9%

Colleges

11



Alums

68



Care Packages

500+



Birthday and
holiday gifts
delivered

150



"I feel comfortable
asking for help
from at least one
person at Wily"

100%

Gift Cards Donated

603



Coaching Sessions

3,640+



"Wily helped me
with at least one
of my **top priority**
issues this year"

98%

Stipends

900



Career Fair
companies

29



Alum Volunteers

10



Community
Volunteers

298



Partner
Organizations

16



"My coach helped
me connect with
new resources"

86.3%