

Wily Shines a Light  
on 2020

Annual Report



# Be the Light



*the wily network*



# Inside

Be the Light.....	2	Gifts at Work .....	14
Assess. Pivot. Adapt.....	6	By the Numbers.....	16
Solidarity .....	8	Celebrating Generosity .....	17
Wily Learns .....	10	Our Donors.....	18
Lighthouses.....	12	Supporting Wily.....	32

**LOOK FOR THE LINKS!** This year, many of our events have been virtual gatherings and are archived at our website, [thewilynetwork.org](http://thewilynetwork.org). We invite you to take a few minutes to see, hear and experience the Wily community at its best.

## Wily's Core Values

At Wily, our **five core values** help us to enact our mission and vision throughout the year, and remind us of what matters most, every day. Look for the colored symbols through this report, connecting Wily values to our work.



**Wily Scholars are the heart of our mission.**



**We believe in the power of deep, trusting relationships.**



**We believe in the strength of our pack.**



**We are committed to the long term.**



**We are a listening/ learning organization.**

## Our Mission

The Wily Network provides a safety net for students navigating college independently.

- Wily works to ensure Scholars have the tools and networks necessary to thrive in four-year residential colleges.
- Wily strives to support Scholars to transition successfully into post-college life.

Wily Scholars are students who have experienced life challenges such as homelessness or foster care, or whose parents may be deceased, dealing with addiction, mental health issues, or incarceration. Some Scholars may be estranged from their families as a result of identifying as LGBTQIA+.

## Wily Programs

We enact this mission through services and programs, including weekly, one-to-one clinical coaching, financial assistance, community-building support, and networking opportunities to help each Scholar move from surviving to thriving.

# Letter from Judi

## Staff

Gabrael Benson, MSW  
*Development/Program Coordinator*

Bianca Blakesley, LICSW  
*Clinical Scholar Coach*

Laura Broffman  
*Operations Coordinator*

Emma Chavenson  
*Financial Aid Coach*

Korie Clegg, MSW  
*Clinical Scholar Coach*

Beth Franklin  
*Program Assistant*

Susan Goldscheid, MAT  
*Clinical Scholar Coach*

Judi Alperin King, PhD  
*Founder and Executive Director*

Ashley Linell  
*Director of Development  
and Communications*

Madjeen Lorthe, MEd  
*Clinical Scholar Coach*

Kat Castañeda Macdonald, LICSW  
*Director of Coaching,  
Clinical Scholar Coach*

Zubin Mistri, MDiv  
*Clinical Scholar Coach*

Bonnie Yezukevich, LICSW  
*Director of Programming,  
Clinical Scholar Coach*

## Dear Wily Pack,

It's been an unusual year, to say the least. As the Wily Network navigated COVID-19, we drew inspiration from this year's theme, "Be the Light." These words served as a guide as we met unexpected challenges, found new strengths, and remembered what it means to walk together, as a community.

We watched, in respect and admiration, as Wily Scholars faced a year of unknowns. We saw them draw on individual and collective strengths, reach out for (and receive) support, and care for one another as a pack.

We were humbled by generous leadership in the Wily community, as many friends stepped up to meet urgent needs, planned and unplanned. Through our work in diversity, equity and inclusion, we challenged ourselves to grow and reach toward the Wily mission.

Since our founding, we've worked hard to build a resilient, mission-driven organization. This year, that work was tested, and we prevailed. We stood with Scholars. We showed up to work, plan, learn and celebrate. And when we invited you to "Be the Light," you responded with overwhelming generosity.

The 2020 Annual Report describes our year in words and pictures, but, as so often happens, the words of a Wily Scholar below convey Wily's impact — your impact — better than any report.

From everyone at Wily, thank you for your partnership in 2020. You are the light!



Judi Alperin King  
Founder and Executive Director



"Wily has been so helpful as I've transitioned back to campus during the pandemic. During a time where everything is up in the air, Wily has been such a necessary beacon of hope and stability. The transition back to college is always difficult, but this year might have been impossible without all that Wily has done for me."

— Gar, Middlebury College

DESIGN  
Martha Abdella  
abdelladesign.com



# Gratitude



## This year, we inspired one another to:

As COVID-19 unfolded last spring, there were so many unknowns. As always, Wily Scholars were our first priority. Every day, we communicated with Scholars about their needs and their experiences. We reimagined and adapted the basics, from housing to clinical coaching to community suppers.

Thanks to your support, and the incredible resilience of Wily Scholars, we made it through a challenging year, and every Scholar who planned to graduate in 2020 did so.

In March, we created an Emergency COVID-19 Fund, to help Scholars navigate changes like campus closures, unplanned travel and many other unanticipated needs. We were overwhelmed by the generous contributions we received, many from donors, grant-makers and local businesses who reached out to Wily — proactively — to find out how they could help.

In all, the Emergency COVID-19 Fund received gifts from more than 300 donors and grant-makers, for a total of \$439,000.

Even with these successes, there were challenges ahead. Could we pull off a successful fundraising event and annual appeal campaign? Find leaders to inspire us with matching gift challenges, grants and other support?

Thanks to our outstanding Wily community, the answer was YES.

# Be the Light

## COVID-19 Emergency Fund Supporters

We are grateful to all the grant-makers and foundations who responded with additional emergency funds in 2020, including these generous benefactors:

The Ilene Beal Charitable Foundation

Boston Resiliency Fund

Further Forward Foundation

Life Science Cares

Daniel E. Offutt III Charitable Trust

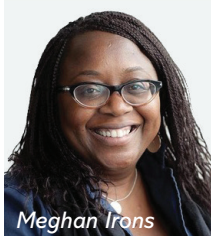
Carole Remick Charitable Foundation

Wellington Management Foundation

“When I think of Wily, I guess I think about having a sort of safety net, and a family to go to. And not just when I’m in need, but when things are going great.”

— Harley, Wily Scholar alum





Meghan Irons



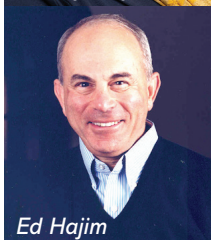
Katherine DePasquale



Olivia Miller



Maddy Day



Ed Hajim



Steve Pemberton



Michael Julian

## Wily Shines a Light on Gratitude: An Evening of Music and Connections

Generously sponsored by the Ilene Beal Charitable Foundation with additional support from Rockland Trust, Eastern Bank and AAFCPAs.

On December 3rd, we welcomed several hundred guests to “Wily Shines a Light on Gratitude,” a virtual celebration of Wily generosity. Thanks to the support of co-chairs Katherine DePasquale and Rodolfo Chaparro, and our host committee, the “Be the Light” annual fund campaign raised over \$425,000 in all. To view the event, visit [bit.ly/WilyShines](https://bit.ly/WilyShines).

Thank you to our host Meghan Irons, Education Reporter, *Boston Globe*, and our featured speakers: Katherine DePasquale, Be the Light co-chair; Olivia Miller, Wily Scholar alum; Maddy Day, Child Welfare and Education Consultant; Ed Hajim, Chairman, HighVista Strategies, and author, *On the Road Less Traveled: An Unlikely Journey from the Orphanage to the Boardroom*; Steve Pemberton, Wily advisory council member and author, *A Chance in the World*; and Michael Julian, Wily board member and AVP, Healthgrades.

Rodolfo Chaparro and Katherine DePasquale, two of Wily’s most committed supporters, have embodied the spirit of the “Be the Light” campaign as leaders — and donors. Together, they made a generous matching gift of \$50,000, which inspired many others to join them in supporting Wily in 2020. Katherine’s message to Wily Scholars in her December 3 “Letter to Wily Scholars” is a simple one that echoes through all of our work: **“We’re rooting for you. You got this.”**

### Be The Light Host Committee

**Katherine DePasquale and Rodolfo Chaparro**  
Be the Light Co-chairs

Ruthie and Jeff Barker

Sara Miller Blanc  
and Jonathon Blanc

Katie and Don Bramley

Anne Cadigan  
and Mike Gaziano

Kristine and Nevin  
Chitkara

Robin Grace  
and Ted Clark

Jodi and Daniel Cooper

Kathy and Bob Cunha

Katherine DePasquale  
and Rodolfo Chaparro

Joy and Mark Denomme

CC Donelan

Erin and Mark Epker

Liz and Art Greenwood

Linda and Mark Griffin

May and John Herr

Allison and Andrew  
Hirsch

Michael Julian

Becky King

Judi and Tim King

Jeff Kline

Cindy and Bob  
Laughrea

Cindy and Seth Lawry

Wendy and Charles  
Leiserson

Renee Levin

Josie Linell

Michelle and Neil  
MacLellan

Laurel and Zach Martin

Annie Montesano  
and Dan Scheibe

Sheila Murphy  
and Jim Martin

Kim and Greg Pappas

Andrea and Dick Patton

Sharisse Cail Perry  
and Steven Perry

Dianne Pink and  
J. Roy Pottle

Judi and Bill Rosensweig

Melissa and Allen Smith

Peggy and Deon Stander

Kyla Truman

Mike Virginio

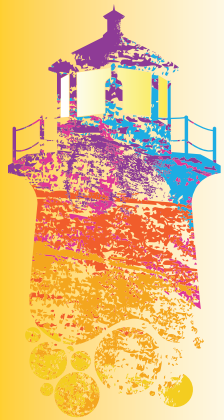
Ellen and Bob Volpe

Suzanne and David  
Wakefield

Susie and Adam  
Winstanley

Natalie and Rod Wright

Debbi and Michael Young



# Inspiration

## Helping Young People Learn and Grow: Daniel Offutt's Legacy

The Daniel E. Offutt III Charitable Trust has honored the Wily Network with leadership support since our founding and has had a lasting impact on our organization. In 2020, a contribution from the Offutt Trust formed a large part of our Emergency COVID-19 Fund and was essential in ensuring that our programs and services were there, without fail, for Wily Scholars during the pandemic. We asked Dick Orenstein, trustee of the Daniel E. Offutt III Charitable Trust, to tell us more about Dan, and how he worked to serve others.

### How does the Wily Network's mission connect to Dan's values and interests?

Dan was a project person and was always looking for ways to connect to his friends by sharing projects. He

wanted to show people the pleasure of accomplishment, whether in building something, repairing something, or learning a new task. This joy of learning was an important basis of Dan's life.

### What kind of difference did Dan hope to make in the world, and how might Wily be enacting some of that difference?

As Dan was nearing the end of his life, he expressed the pleasure of knowing that he would be changing lives through his trust, including helping young adults grow. As the trustee of Dan's estate, and knowing what I do of his life and the early, sad death of his father, I believe Dan would be pleased to know that by supporting Wily, through his Charitable Trust, he is helping people to learn and grow.



*Daniel Offutt*



## THE ILENE BEAL CHARITABLE FOUNDATION

### Embracing Challenges and Serving Others: Ilene Beal's Legacy

The **Ilene Beal Charitable Foundation** has provided major support to the Wily Network for several years, including outstanding generosity in 2020. We asked trustee Gina Regina, who knew Ilene well, to tell us how Wily's mission and Ilene's values are connected.

#### What were some of Ilene's guiding values?

Ilene was a quiet, thoughtful person who, I believe, made a difference in the world by leading through her example. She valued education, hard work, friendship, kindness and generosity, all the while embracing and overcoming the many challenges she faced. Her foundation was one of her efforts to leave the world a little better than she found it.



*Ilene Beal*

#### How do you think Wily's mission connects to Ilene's personal legacy?

The Wily Network works to make the world a better place by recognizing, supporting and mentoring smart, hard-working, resilient young people. We hope that Ilene's life and values will inspire Wily Scholars to work hard, serve others, cultivate respectful, long-lasting relationships and to leave the world better than they found it.



### Sharing the Light: Carole Remick's Legacy

Another generous supporter of our work in 2020 was the **Carole Remick Charitable Foundation**. Mary Kaye Leonard, director of the Remick Foundation, told us more about Carole's life and legacy.

#### How does the Wily Network's mission connect to Carole's values and interests?

Carole Remick spent her life educating young minds as a high school teacher and college professor. She always focused on finding that one student who had the talent but didn't have the resources or connections to make things happen. She studied each student, figured out how to bring their best to light and helped them flourish. Carole was the light!

#### What kind of difference did Carole hope to make in the world, and how might Wily be enacting some of that difference?

Carole wanted to help as many students as possible realize their dreams, no matter their circumstances.

Her legacy is carried on through the Carole Remick Charitable Foundation and aligns perfectly with all the great work Wily is doing to empower students, so they become confident, courageous and determined.



*Carole Remick*



# Assess. Pivot. Adapt.



## The Wily Pack Stayed Strong in an Unusual Year

“We’re here for you” are words we share often with Wily Scholars, and this year, those words meant more than ever. In 2020, we found ways to assess new challenges, pivot with creative solutions, and adapt to a new normal.

**Wily Scholars led the way, demonstrating creativity, stamina and grace at every step.**

Campus closures and other changes in college life meant sudden uncertainties in housing, food and other necessities for many Scholars. We worked with Scholars — and their respective schools — to understand each person’s unique circumstances, and offer support for managing the unknowns. We found safe, meaningful ways to build connections, gather together for holidays and events, create and distribute care packages and gifts, and continue the career and networking opportunities that are so vital to each Wily Scholar’s personal goals and plans.

**When Wily Scholars needed their pack, we were ready.**



We couldn’t gather in person for **Packsgiving 2020**, but with some creative planning, Scholars shared the same meal (via delivery) and celebrated the holiday as a pack.



### Creating, inspiring and sharing strengths

This custom-designed Black Lives Matter t-shirt is just one example of Wily Scholars sharing inspiration and building unique collaborations. Aisha (UMass Boston) suggested that Wily create a Black Lives Matter t-shirt. Lissa (Mass College of Art) created the design, and every Scholar received a t-shirt. J’Saun (Boston College) is producing the shirt at his company, Radical Route, which highlights the work of Black artists (see more at [radicalroute.com](http://radicalroute.com)).

### Community Day

Wily’s Community Day focuses on creating opportunities for social interaction and meaningful connection among Scholars, a unique challenge during a global pandemic. This year’s event included everything from games and pumpkin decorating to break-out discussions, presentations — and even some virtual tours of Scholars’ dorm rooms. Participants also enjoyed a delicious lunch from our friends at East Meets West. Overall, the unusual nature of the gathering helped us celebrate and deepen connections, in spite of the world around us.

# Class of 2020

## Congratulations, Graduates: We are Proud to Walk with You!

Graduation was different this year, but so many important elements were there: caps and gowns, sharing unforgettable Wily moments and memories, an inspiring guest speaker — Bert Jacobs, co-founder of Life Is Good — and most of all, tremendous pride in our graduates. Every Wily Scholar who planned to graduate in 2020 was able to cross that finish line: a truly remarkable achievement.

### Boston University

Taylor R.



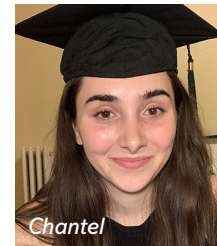
### Middlebury College

Jilly  
Jordan  
Rachel



### Northeastern University

Cameron  
Chantel  
Christina  
Harley  
Isiah



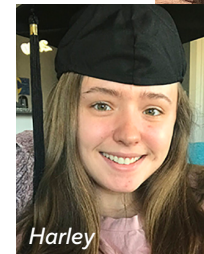
### Massachusetts Institute of Technology

Jonathon  
Rene  
Saffron



### Wellesley College

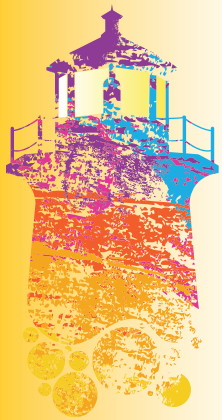
Taylor B.



**We support 72 Scholars across 11 campuses:** Boston College, Boston University, Brandeis University, Bridgewater State University, Emerson College, Harvard University, Massachusetts College of Art and Design, Massachusetts Institute of Technology, Middlebury College, Northeastern University, and UMass Boston (as of 5/2021)







# Solidarity

## Growing through Diversity, Equity and Inclusion

This year, Wily embarked on a transformative process to build **diversity, equity and inclusion** (DEI) into the life of our organization. To lead us in this work, we engaged Kiera Penpeci, PsyD, an experienced DEI consultant who has worked with many organizations to build and sustain a culture of inclusion and anti-racism. In 2020, Dr. Penpeci led trainings for the Board and staff and interviewed coaches to gather their feedback and reflections on Wily programs and culture.

### Why is DEI important for Wily?

**The values and concepts of DEI relate directly to our mission.** Integrating them enables us to better serve Wily Scholars and to build a community where everyone — Scholars, staff members, volunteers, and community partners — feels welcomed and valued.



### Our Commitment to DEI and Anti-racism

As a foundation for this work, Wily adopted a statement\* expressing our shared commitment to DEI and anti-racism. Some of our specific commitments include:

- De-centering white supremacy and prioritizing the intellect, teachings, and lived experiences of our employees and those we serve, in every aspect of our work.
- Challenging our assumptions and continuously critiquing our work, to better align with our mission and values.
- Investing in continued anti-racism, equity, and inclusion work and evaluating the diversity and the sense of belonging among Wily stakeholders.
- Practicing collective accountability through self-reflection and organizational evaluation, honoring our individual experiences and identities, and using our personal privileges to help others and benefit our personal relationships.

\*Read the complete DEI and Anti-Racism statement at [bit.ly/WilySolidarity](https://bit.ly/WilySolidarity).

“My hope for the future is that the Wily Network will become synonymous with anti-racism and inclusion, as an organization and as an employer, so that people from all walks of life will want to be a part of the pack.”

— Kiera Penpeci, PsyD, DEI consultant



### Wily's Black Scholars Affinity Group

Spearheaded by Wily Scholars in the spring of 2020, Wily's Black Scholars Affinity Group was established to provide a safe space for students that identify as Black to freely and authentically engage in discussions regarding their experiences. Our hope is to share the highs and lows and build a support system that promotes empowerment and resiliency.

"I love Wily's Black Affinity Group. It's so much fun getting to talk to other people outside my daily scheduled interactions. Ana is so bright and bubbly naturally — it's contagious. We can talk about anything, which allows us to laugh about the situations we go through and relate to one another. The group provides a break from my scheduled tasks and a space to relax, vent and be spontaneous."

— Tikia, Wily Scholar, Boston College



"As a former Wily Network coach, I was eager to facilitate Wily's Black Scholars Affinity Group. We must create safe spaces for Black students to breathe, thrive and freely engage in conversations about their experiences and address the complexities of racism, should they choose to. My goal for this group is for Black students to have a space to be their authentic selves, to feel seen, supported and celebrated."

— Ana Ayobiojo, former Wily Scholar  
Clinical Coach



# Wily Learns

## 3rd Annual Wily Speaker Series: Wily Shines a Light on College Students and their Mental Well-Being

*Generously sponsored by:*

### THE ILENE BEAL CHARITABLE FOUNDATION

**Mental well-being and self-care have always been part of the Wily Network's programs and services, and this year, these topics have had even greater resonance.** Our 3rd Annual Wily Speaker Series was a virtual gathering that included Scholars, clinical coaches, Wily community members, and leaders in the fields of collegiate student life and mental health.

Guest panelists were Sherri Ettinger Ph.D., LICSW, Head of the Counseling Center at Simmons College, and Micah M. Griffin, Ph.D., MHA, Senior Director of University Health at Penn State University.

The event was hosted by Wily Scholar and MIT senior Mathieu Medina and Sheila Murphy, a consultant at WittKieffer and Wily advisory council member.

We were delighted to present the 2021 Wily Pack Award — our annual award honoring a Wily Scholar who has made a significant impact on our program — to Saffron Deasey, a member of the MIT Class of 2020, during the event. Those of us who have the honor of knowing Saffron have learned from her warmth, wisdom and independent spirit. Saffron's clinical coach, Susan Goldscheid, spoke for us all when she said, "Saffron, I know that Wily was here to benefit you, but I can't

emphasize enough how we all benefit by knowing you." The 2021 Wily Pack Award was made in honor of Gail and Jim Radley, who were the very first donors to the Wily Network and remain among our most visionary supporters.

To watch a recording of this event, visit [bit.ly/WilySpeakerSeries](https://bit.ly/WilySpeakerSeries).

**"We have the deepest respect and admiration for the Wily Network and the difference they are making in so many lives. We are proud of you, we applaud you and we support you."**

**— Gail and Jim Radley, honorees**



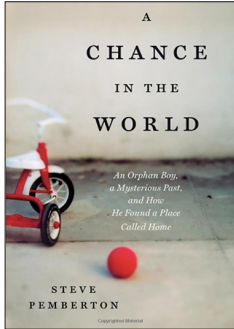
**"The Wily Network is not there to do everything for us. What the Wily Network does is help us manage the noise, and provide us support and care, so we can focus on what we came to school to do: get our degrees. Being a Wily Scholar has helped me develop the tools, networks, and skills to leave college the same way I started: with a very bright future ahead of me."**

**— Saffron Deasey, Wily Scholar alum, MIT Class of 2020, 2021 Wily Pack Award Recipient**





## Wily's Summer Read 2020



Last year we held our first virtual event, Wily's Summer Read, a program created to help the Wily community connect through the shared experience of a great story. We knew that the perfect "read" would offer illuminating perspectives to challenge and inform us, and provide new tools and ideas to

the Wily Network. Steve Pemberton's book, *A Chance in the World*, did all that and more. This frank and moving memoir chronicles Steve's experiences of loss, adversity,

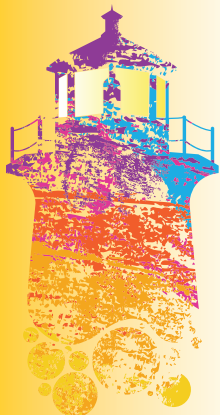
hope and hard-won successes. Judi Alperin King noted that Steve's book was one of the shaping influences of the Wily Network in its earliest days.

Pemberton, who is the Chief Human Resources Officer at WorkHuman and a Wily advisory council member, joined Carmen Ortiz-McGhee, Executive Vice President of NAIC, Wily Scholar J'Saun Bastien, and Wily's Executive Director Judi Alperin King for a virtual discussion on July 27, 2020, about his book and the subject of empathy: what makes it authentic, how it impacts us, and how we can cultivate authentic empathy in our lives.

To watch their conversation, visit [bit.ly/WilySummerRead2020](https://bit.ly/WilySummerRead2020).



Pictured clockwise: Judi Alperin King, J'Saun Bastien, Steve Pemberton, Carmen Ortiz-McGhee



# Lighthouses

## Wily Leadership 2021

Wily is fortunate to have the visionary leadership of our Board of Directors, Honorary Board, and Advisory Council. We are especially pleased to recognize the **Scholar Representatives** on our Board and the leaders of our new **Young Professionals Association**, who bring invaluable insights, experiences and energy to our work. Thank you to all of these dedicated leaders!

### Board of Directors

Sara Miller Blanc  
Don Bramley  
Katie Bramley, *Chair*  
Nevin Chitkara  
Tara Hendricks  
Allison Hirsch, *Treasurer*  
Michael Julian, *Clerk*  
Judi Alperin King  
*Executive Director*  
Zach Martin  
Mathieu Medina  
*Scholar Representative*  
Osamagbe Osagie  
Kim Pappas  
Sharisse Cail Perry  
Judi Rosensweig  
Andy Rudzinski  
Jennifer Schoen  
Marissa Spletter  
*Scholar Representative*  
Scott Steele

### Honorary Board

David Spina  
Stevie Spina  
Robin Wolpow

### Advisory Council

Bryan Allard  
Donna Bonaparte  
Kelly Glew  
Jeff Kline  
Margaret Lewis  
Meredith Mendelson  
Annie Montesano  
Sheila Murphy  
Steve Pemberton  
Kathryn Sargent  
Kris Schaefer  
Carolyn Shaughnessy  
Edward Walker  
Leann Walsh



*Mathieu Medina*



*Marissa Spletter*

## The 2021 Wily Champion Award was given to Kathryn Sargent

A daily question at Wily is: “Did Kathryn read this?” Kathryn’s name was first seen on Wily’s original application for non-profit status in 2014, when she signed on to be a founding board member, and her seal of approval has been on every document we have produced since. She started out as a thought partner, advisor and friend and she has continued as a grant writer, editor, donor and sounding board. Kathryn is now the executive director of The Locker Project, a program that focuses on food insecurity in Maine. She remains an innovative thinker on Wily’s behalf, a true beam of light and an invaluable resource for all of us at the Wily Network.



*Kathryn Sargent*





## Young Professionals Association Leadership\*

Sara Miller Blanc  
*Board Representative*

Austin Crouse  
*Co-chair, Membership*

Laura Broffman  
*Staff Representative*

Natalie Krause  
*Co-chair, Advancement*

Taylor Capuano  
*Co-chair*

Liz Stanfield  
*Co-chair, Membership*

James Carroll  
*Co-chair, Advancement*

Mike Virginio  
*Co-chair*



## Thank you to the 2020 Retiring Board Members

Leann Walsh  
*Board of Directors*

Chantel Riendeau  
*Scholar Representative*

Mike Virginio  
*Board Fellow*

*Pictured left to right, top row: Austin Crouse, Kyla Truman, Elizabeth Stein; middle row: Sara Miller Blanc, Laura Broffman, Sarah Janes; bottom row: Natalie Krause, Mike Virginio, Taylor Capuano*

\*Read more about the YPA on page 32.

## Annual Meeting: January 11, 2021

At the 2021 Annual Meeting of the Wily Network, we continued to explore the year's theme, "Be the Light." We reflected on the many ways that bold leadership, learning and service are shaping all of our lives and carrying the Wily Network forward. This virtual event, like so many of Wily's gatherings this year, was different in

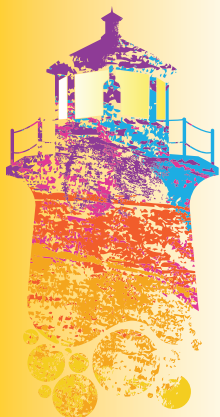
format, but infused with Wily energy and creativity. Edward Walker, a member of Wily's advisory council and Founder/President of Independent Consultants of Education, moderated a lively panel featuring Scholars Saffron Deasey (MIT '20), Mathieu Medina (MIT '21) and Chantel Riendeau (Northeastern '20).



*Ed Walker*

"When COVID hit college campuses Wily jumped into action. I had my coach emailing me, helping me problem solve, figuring out how I was going to get safe, secure housing. Wily didn't freeze: Wily stepped up to the plate where those gaps that already existed from our institutions kind of widened."

— Mathieu Medina, Wily Scholar, MIT '21



# Gifts at Work



## Fund-A-Scholar

The Fund-A-Scholar program honors donors who connect their gifts directly to the resources needed to support Wily Scholars. You help us meet the needs of Scholars today and prepare to welcome new Scholars in the years ahead. You inspire other individuals, families, businesses and grant-makers to join you in building a vibrant Wily community. Most importantly, you let Wily Scholars know that you're proud to be part of their journey.

### How does it work?

As part of the Fund-A-Scholar campaign, you may choose to make a gift that is equivalent to support for one Scholar for a year, one Scholar for four years, or multiple Scholars for four years. These gifts can be made in a single contribution or with a multi-year pledge. These gifts are not sponsorships, but they are a meaningful way to connect giving to impact. Fund-A-Scholar donors are recognized in Wily Network

publications, such as our annual report, and are also included in our donor recognition circles, according to giving level. Anonymous gifts are also welcome.

If you have supported the Fund-a-Scholar program in previous years, thank you! Because of you, the Wily Network is thriving. We are proud to include you as part of our growing community and hope that you'll share our pride in all that you have made possible.

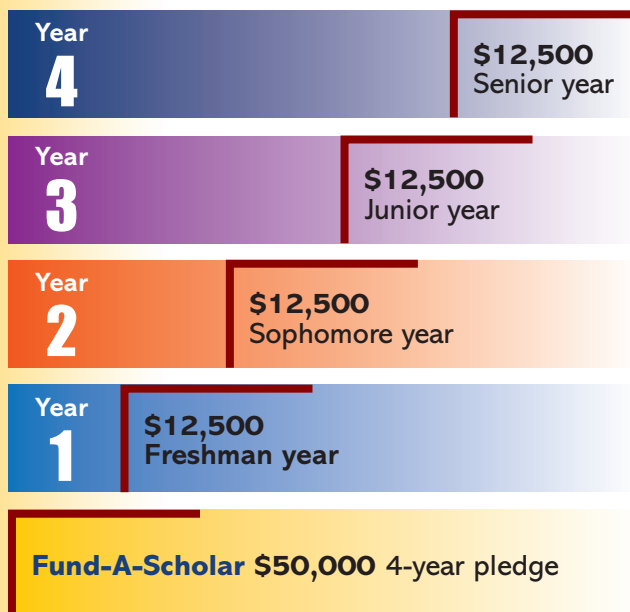
### Examples of your gifts at work\*

These resources and associated costs illustrate some of the ways you are making a difference through your gifts to the Wily Network.

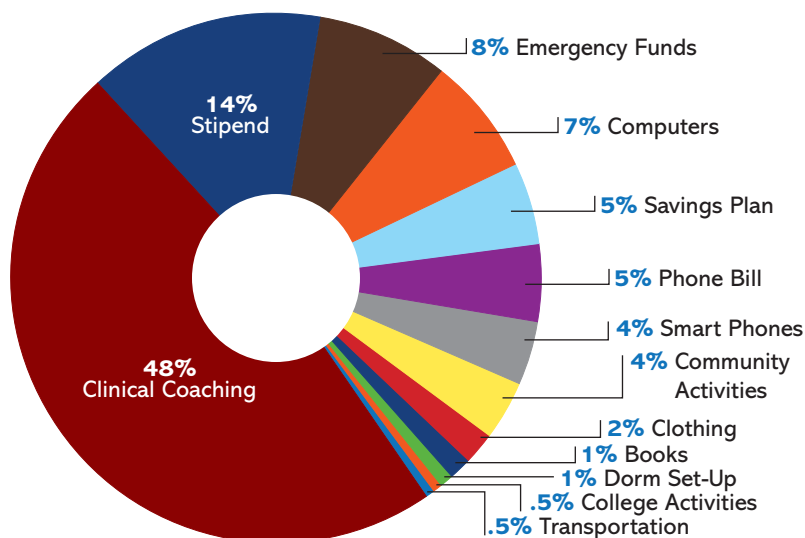
**\$50,000** Four years  
of Wily Network  
support for **one**  
Scholar

**\$12,500** A full year  
of Wily Network  
support for **one**  
Scholar

*\*All gifts to the Wily Network are for general operating purposes, and no gift is designated to a specific Scholar.*



### Fund-A-Scholar Expenses: Average for 1 Scholar



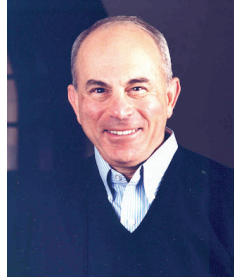


# Donor Spotlight

## Fund-A Scholar Donors

Patty and Mel Alperin\*  
Katie and Don Bramley\*  
Nevin and Kristine Chitkara  
Helena D'Angelo  
Lynne and Joe Delaney  
Cindy and Jim Duffy  
Further Forward Foundation  
Liz and Art Greenwood  
Linda and Mark Griffin  
Barbara and Ed Hajim  
Zach and Laurel Martin  
Michele Norman and Steve Loose  
Daniel E. Offutt III Charitable Trust  
Kim and Greg Pappas  
Kathy and Bill Parent\*  
Dianne Pink and J. Roy Pottle  
Susan and Stu Porter  
Gail and Jim Radley\*  
Carole Remick Charitable Foundation  
Judi and Bill Rosensweig  
Barbara and Arthur Simons  
Michael Simons  
Stevie and David Spina  
St. Jean Family  
Scott and Ursula Steele  
Hilary and Langley Steinert  
Robin and Marc Wolpow\*  
Debbi and Michael Young

## Carrying the Wily Banner: Ed Hajim



Ed Hajim is one of the newest and most enthusiastic supporters of the Wily Network Fund-A-Scholar program. Ed is Chairman of HighVista Strategies, a Boston-based investment firm, and the author of an autobiography, *On the Road Less Traveled: An Unlikely Journey from the Orphanage to the Boardroom*. We asked Ed to share his thoughts about his support of Wily and what our mission means to him.

### How do the mission and programs of the Wily Network connect to your values?

Wily's mission of helping students experiencing financial or other challenges to navigate the difficulties of college life is a vital service. Wily's counseling and care have changed students' lives, and the organization's efforts will produce individuals who are motivated to give back and to make the world a better place.

### What do you hope to accomplish by supporting the Wily Network?

I hope that my support will help Wily carry out its mission of supporting Wily Scholars in a successful college experience, which is a pivotal point in their lives. Wily is an indispensable resource in helping this very important but neglected part of the student population.

### How are you encouraging others to join the Wily community?

I encourage friends to support Wily by carrying the Wily banner wherever I go. I tell them, if you want to make a difference, join the Wily campaign. Wily's action changes lives.

"Wily's been absolutely one of the best, most fondly remembered experiences of my college experience. It was really powerful and meaningful. I think that Wily is the reason I was able to finish school, and graduate, and be in the position that I am now."

— Harley, Wily Scholar alum



# By the Numbers

## Fiscal Year 2020 Financials

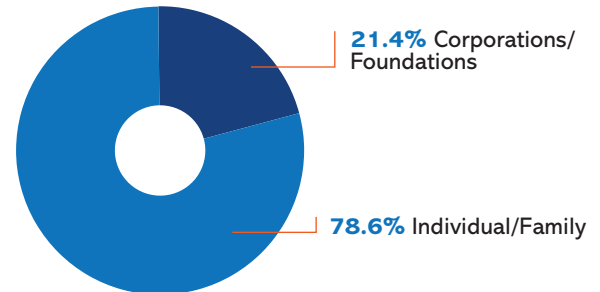
At the Wily Network, we are building a strong, supportive community that includes Scholars and clinical coaches, staff and program alumni, volunteers and many generous friends like you. Gifts of financial support are one important way that **we walk with Wily Scholars** as they learn, grow and thrive. Our community reflects important shared values at the Wily Network,

like equity and inclusion, and working together toward common goals.

Since our founding in 2015, the Wily Network has relied on the partnership and generosity of donors and volunteers who share our commitment to Wily's mission. This year, that support meant more than ever. Thank you.

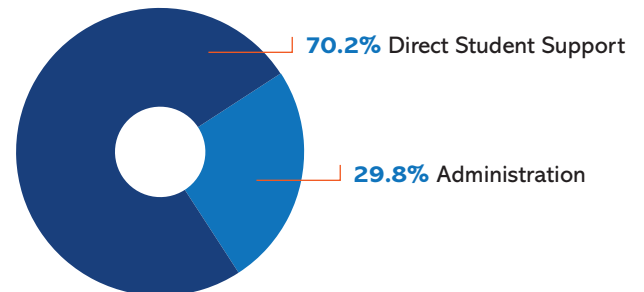
### 2020 Revenue

Individual/Family	\$1,393,607
Corporations/Foundations	\$379,359
<b>Total</b>	<b>\$1,772,966</b>



### 2020 Expenses

Direct Student Support	\$935,796
Administration	\$397,590
	<b>\$1,333,386</b>



All financial statistics for 2020 are unaudited. If you would like to request a copy of the full, audited statements, please email Ashley Linell at [ashley@thewilynnetwork.org](mailto:ashley@thewilynnetwork.org).

"When I moved into college, Judi and I went and got everything I would need for college, the bedding, the computer, notebooks, everything that I would need to be good. And she came back to make sure that I was still good, and if I was missing anything else, she would go get that my freshman year, and it was really helpful for me."

— Eric, Wily Scholar alum

# Celebrating Generosity



## Wily Partners

We are proud to introduce Wily Partners, recognizing all those who contribute \$1,000 or more to the Wily Network during the fiscal year. Becoming a Wily Partner is a wonderful way to support Scholars on their journey and inspire others to join you. It's also our opportunity to say thank you, for your generous partnership. Anonymous gifts are welcomed, and we always honor your preferences for recognition.

## Within Wily Partners, we recognize these levels:

### \$100,000 and above

Daniel E. Offutt III Charitable Trust  
Stevie and David Spina

### \$99,999–\$50,000

The Ilene Beal Charitable Foundation  
Katie and Don Bramley\*  
Carole Remick Charitable Foundation  
Clipper Ship Foundation  
Katherine DePasquale  
and Rodolfo Chaparro  
Kim and Greg Pappas  
Wellington Management Foundation  
Robin and Marc Wolpow\*  
Debbi and Michael Young

### \$49,999–\$25,000

Cummings Foundation  
J.E. & Z.B. Butler Foundation  
Life Science Cares  
Kristin and Stephen Mugford  
Judi and Bill Rosensweig

### \$24,999–\$10,000

Anonymous (1)  
Patty and Mel Alperin\*  
Boston Resiliency Fund  
Nevin and Kristine Chitkara  
Helena D'Angelo  
DCU For Kids  
Lynne and Joe Delaney  
Cindy and Jim Duffy  
Further Forward Foundation  
Liz and Art Greenwood

Ed and Barbara Hajim  
Cindy and Seth Lawry  
Zach and Laurel Martin  
Meg Reynolds and Skip McKee  
Michele Norman and Steve Loose  
Kathy and Bill Parent\*  
Dianne Pink and J. Roy Pottle  
Susan and Stu Porter  
Gail and Jim Radley\*  
Roy A. Hunt Foundation  
Barbara and Arthur Simons  
Michael Simons  
Scott and Ursula Steele  
Hilary and Langley Steinert  
The Philanthropy Connection

### \$9,999–\$5,000

Kathy and Mark Alperin  
Corinne Basler  
Adrianne and Michael Canning  
Eastern Bank  
Jennifer and Robert Ewing  
Linda and Mark Griffin  
Jason Hayes Foundation  
Allison and Andrew Hirsch  
Kathleen and Rob Ix  
Herb and Maxine Jacobs Foundation  
Lisa Howe and Stephen Kaufer  
Judi and Tim King\*  
Kelley Laurel and Dan Brownell  
Renee Levin  
Janine and Bob Penfield  
Kris Schaefer and Lisa Chapnick  
St. Jean Family  
Jenna and Matthew Vettel  
Suzanne and David Wakefield

### \$4,999–\$1,000

Anonymous (3)  
Kate Agarwal  
Melissa Akopiantz  
Mimi and Barry Alperin\*  
Mickey Alperin  
Meryl and Mitchel Appelbaum  
Bain Capital Children's Charity  
Ruth and Jeff Barker\*  
Arthur and Ann Barrett  
Elissa Birke and Shawn Fitzgibbon\*  
Donna Bonaparte  
Jennifer and Robert Bowman  
Kathy Brennan and Gerald Cianciolo  
Jessica and Michael Butler  
Ana Maria Caballero McGuire  
and Kevin McGuire  
Linda Cabot and Ed Anderson\*  
Anne Cadigan and Mike Gaziano  
Aimee Cardwell  
Alex and Antonella Casale  
Jennifer and Beau Coash  
Gabrielle and Richard Coffman  
Trinitia Conway  
Jodi and Daniel Cooper  
Mark Cordes  
Diane Couloupoulos  
Chris and Maribeth Dacey  
Dana and Stuart Davies  
Joy and Mark Denomme  
Dawn and Mark Donovan  
Beth and David Franklin  
Amy Glass  
Joanne and Mark Golden  
Beth Kressley Goldstein  
and Dennis Goldstein  
Robin Grace and Ted Clark  
Asheesh Gupta and Ellie Pierce  
Emily Helm  
May and John Herr  
Hope and David Hirsch  
Gita Iyer and Vijay Vishwanath  
Mary Lou and Bill Jackson  
Chris Jenny  
Michael and Parrisa Julian\*  
Anne and Mark Kelley  
Jeffrey Kline  
Wendy and Charles Leiserson  
Christine and David Letts

Susie and Tony Lisa  
Rose and Bill Lovejoy  
Pam and Andy Martin  
Coleen and Scott McAdam  
Laura McTaggart and Tom Nolan  
Kate Mead  
Meredith Mendelson  
Lisa Miller\*  
Katie Oakes and Vahid Ownjazayeri  
Robyn Parker  
J. Brian Potts  
Lisa and Benjamin Procter  
Judith and Jack Remondi  
Nicole and Jamie Rhind  
Peter Roby  
Rachel Rock and Josh Levy  
Sue and Chuck Ross  
Amy Rothstein  
Andy Rudzinski  
and Stephanie Boucher  
Caroline and David Ryan  
Andres Saenz  
Matthew Scarafoni  
Kris Schaefer and Lisa Chapnick  
Elizabeth Sells  
and Hans Carbonneau  
Kiki and Drew Shilling  
Jacqueline Shoback  
Sonia and Jason Silverman  
Libby and Sean Silvia  
Jennifer and Michael Simons  
Tom Sommerfield  
and Cathy Olofson  
Lisa and Garz Soule  
Peggy and Deon Stander  
John Sulick  
Sunovion Pharmaceuticals, Inc.  
Jeff and Shannon Taylor  
The Rivers School  
Genie and Will Thorndike  
Thornhill Family Charitable Trust  
Kyla Truman and Phillip Graham  
Josef and Dana Volman  
John and Kristine Wahr  
Marcia Walsh  
Leann and Brian Walsh  
Natalie and Rod Wright  
Kellie and David Zupkofska

\*Five years of consecutive giving



# Donors



## Friends of Wily

Gifts of every amount make a difference for Wily Scholars and our growing community. We are proud to recognize all Friends of Wily for their partnership and generosity.

## Be the Light

Anonymous (9)  
 Bryan Allard  
 Mimi and Barry Alperin\*  
 Kathy and Mark Alperin  
 Amazon Smile  
 Elizabeth and Oliver Ames  
 Debbie and Don Aronson  
 Ruth and Jeff Barker\*  
 Elissa Birke and Shawn Fitzgibbon\*  
 Kristine and Craig Bloomer\*  
 Laura Bloomer  
 Marcella and Pieter Boelhouwer  
 Donna Bonaparte  
 Beth and Mark Bono  
 Sheila and Marc Boyle  
 Stacy and Woody Bradford  
 Katie and Don Bramley\*  
 Kathy Brennan and Gerald Cianciolo  
 Laura Broffman  
 and Guillermo Narvaez  
 Melissa Brooks  
 Anne Cadigan and Mike Gaziano  
 Adrienne and Michael Canning  
 Aimee Cardwell  
 Nevin and Kristine Chitkara  
 Jennifer and Beau Coash



Ellen Pinkos Cobb\*  
 Trinitia Conway  
 Jodi and Daniel Cooper  
 Janet and Steve Correia  
 Hanley Cox  
 Molly and Rob Cramer  
 Kathy and Bob Cunha  
 Dana and Stuart Davies  
 Katherine DePasquale  
 and Rodolfo Chaparro  
 Jillian Darling  
 Michele DiStasio  
 Daniel Doherty  
 Dawn and Mark Donovan  
 Karen and Jim Durham  
 Anne and Jeff Elton  
 Jennifer and Robert Ewing  
 Lisa and Mike Falkson  
 Nancy and Arthur Feibus  
 Sheila and Bob Flory  
 Lauren Fragoza  
 Beth and David Franklin  
 Fred Franklin  
 Robyn and Dale Garth\*  
 Joanne and Mark Golden  
 Susan Goldscheid and Marc McGarry  
 Jess Goodwin  
 Andrea and John Ham  
 Patrick Hayes  
 Emily Helm  
 May and John Herr  
 Caroline and Ken Himmelman\*  
 Allison and Andrew Hirsch  
 Hope and David Hirsch  
 Megan and Bill Holding  
 Lisa Howe and Stephen Kaufer  
 Brenda and Jim Hsu  
 Kathleen and Rob Ix  
 Suzi and Dave Johnson  
 Michael and Parrisa Julian\*  
 Natalia Kapourelakos  
 Anne and Mark Kelley  
 Rebecca Kenney  
 Anne Harvey Kilburn

Ellen King  
 Jen King  
 Judi and Tim King\*  
 Vicki and Norty Knox  
 Barbara and Tom Kohler  
 Kim Krawshuk  
 Deborah and Mort Künstler  
 Meredith Laban and Adam Wade  
 Amy Lauer and Mike Kelly  
 Sandra Lawrence  
 Cindy and Seth Lawry  
 Laurie and Michael Lee  
 Wendy and Charles Leiserson  
 Renee Levin  
 Liberman Eisenberg Family  
 Jared Littlejohn  
 Timothy Long  
 Madjeen Lorthie  
 Stacey Marino  
 Pam and Andy Martin  
 Irene Masciarelli  
 Mark McCartney  
 Kathleen McDougall  
 and Douglas Lowe  
 Meg Reynolds and Skip McKee  
 Laura McTaggart and Tom Nolan  
 Meredith Mendelson  
 Ginger Milbury  
 Karen and Jeffrey Miller  
 Lisa Miller\*  
 Bobby and Jeff Morgenstern  
 Aletta and Chris Mutz  
 Hope and Steve Naples  
 Audrey and George Nichols  
 Kathy and Karl Nordgren  
 Sue Orenstein and Jay Leib  
 Robyn Parker  
 Jane and George Pelz  
 Janine and Bob Penfield  
 Antonia Perry  
 Sharisse Cail Perry and Steven Perry  
 Lisa and Benjamin Procter  
 Carol Reiling  
 Nicole and Jamie Rhind  
 Andrea Robinson  
 and Jonathan Talamo\*  
 Selena Rogers  
 Carol Rosensweig  
 and Charlene Grant  
 Amy Rothstein  
 Caroline and David Ryan

Serve Kindness  
 Kiki and Drew Shilling  
 Linda and Dick Silverman\*  
 Sonia and Jason Silverman  
 Libby and Sean Silvia  
 Jennifer and Michael Simons  
 Steven Skolnik  
 Melissa and Allen Smith  
 Tom Sommerfield  
 and Cathy Olofson  
 Stevie and David Spina  
 Peggy and Deon Stander  
 Teresa Stock  
 Sunovion Pharmaceuticals, Inc.  
 Archana and Pete Szpak  
 Carly VanTassel  
 Ellen and Bob Volpe  
 Suzanne and David Wakefield  
 Catherine and Rod Walkey  
 Leann and Brian Walsh  
 Marcia Walsh  
 Mari and Charlie White  
 Pam Willsey  
 Deb Yanofsky and Steve Shulman

## COVID-19 Urgent Need

Anonymous (12)  
 Anna Abate  
 Kate Agarwal  
 Ted Ahrens  
 Carly Alperin  
 Mickey Alperin  
 Patty and Mel Alperin\*  
 Tracy Alperin  
 Sharon Alphas  
 Carol Argento  
 ASICS Digital  
 Katie Barnett  
 Amy and Alan Barry  
 Auli and Ken Batts  
 The Ilene Beal Charitable Foundation  
 Susan Benford  
 Holly Bernene  
 Tracey Bird  
 Shimrit and Daniel Black  
 Heidi Black  
 Russell Bloch  
 Kristine and Craig Bloomer\*  
 Laura Bloomer



*the wily network*

## The Wily Network Student Assistance Fund at Middlebury College

Katie and Don Bramley\*  
 Susan and Brian Kavogian  
 Natalie and Rod Wright



Marcella and Pieter Boelhouwer  
Boston Resiliency Fund  
Stacy and Woody Bradford  
Ben Bramley  
June and Michael Bramley  
Katie and Don Bramley\*  
Nicole Bramley  
Jennifer Braxton and Mary Gorman  
Marcia and Bob Bubolz  
Helen Buck  
Trisha Bunce  
Becca Butler  
Jessica and Michael Butler  
Linda Cabot and Ed Anderson\*  
Jennifer Carlson-Pietraszek  
Mary and Scott Carson

Deena and Robert Ferrara  
Audrey Fisch  
Jennifer and Anthony Fortunato  
Lauren Fragoza  
Further Forward Foundation  
Robyn and Dale Garth\*  
Barbara Gaskin  
Michael Gladstone  
Kelly and Michael Glew  
Jill Goldenberg  
Skippy Goldfein  
Diana and Dan Goldman  
Robin Grace and Ted Clark  
Carol and Zander Grant  
Sarah and Scott Gregorian  
Linda and Mark Griffin

Somiya Kalloo  
Mary and Jeff Keough  
Judi and Tim King\*  
Dr. Laura Kleiman  
Jeffrey Kline  
Barbara and Tom Kohler  
Meredith Laban and Adam Wade  
Lisa Lamoureux  
Terry Landon  
Trisha Langkos  
Sandra Lawrence  
Cindy and Seth Lawry  
Deirdre and Darby Leid  
Christine and David Letts  
Renee Levin  
Madeline and Mark Lewis\*  
Lieberman Eisenberg Family  
Life Science Cares  
Ashley and John Linell  
Therese Lockemy  
Pam and Andy Martin  
Zach and Laurel Martin  
Kathleen McDougall  
and Douglas Lowe  
Meredith Mendelson  
Liana Meyers  
Smaiyr Million  
Susan Molinari  
Annie Montesano and Dan Scheibe  
Denise Mooney  
Monique Nerrow  
Amy Newell  
Katie Oakes and Vahid Ownjazayeri  
Daniel E. Offutt III Charitable Trust  
Sue Orenstein and Jay Leib  
Kathleen Parker  
Carole and R. Wayne Parrish  
Lisa and Ned Parsons  
Amy Patnode  
Janine and Bob Penfield  
Ari Peskoe  
Jennifer Pokempner  
Emily Pollock  
J. Brian Potts  
Pat Profeta and Rob Aranow  
Cristiana Quinn  
Gail and Jim Radley\*  
Sarah Rahman  
Gina Regina  
Emily Reich and Max Gould  
Sydney Resendez

Peter Roby  
Rachel Rock and Josh Levy  
Helen Rosenfeld  
Carol Rosensweig  
and Charlene Grant  
Judi and Bill Rosensweig  
Greg Rossino  
Kathleen and Greg Rush  
Caroline and David Ryan  
Stacey and Frank Santo  
Kris Schaefer and Lisa Chapnick  
Matthew Schattner  
Bev Schmidt  
Dawn and Scott Schnell  
Jennifer Schoen and Janet Bagley\*  
Matthew Schweich  
Madhuparna Sen  
Risa Shames  
Barbie and Mark Shaughnessy  
Carolyn and Sean Shaughnessy  
Jacqueline Shoback  
Linda and Dick Silverman\*  
Sonia and Jason Silverman  
Jennifer and Michael Simons  
Elizabeth and Lucian Snow  
Ann Solberg  
Stevie and David Spina  
St. Jean Family  
Peggy and Deon Stander  
Scott and Ursula Steele  
Hilary and Langley Steinert  
Ron Stoloff and Judi Seldin  
Anne Strand  
Alison Strausberg  
Brennan and Marylou Sullivan  
Alexandra and Bill Taussig  
Elizabeth and Michael Taylor  
Charlotte and Theodore Teplow  
Thornhill Family Charitable Trust  
Kyla Truman and Phillip Graham  
Josef and Dana Volman  
Edward and Bonnie Walker  
Leann and Brian Walsh  
Jennifer Weisman  
Wellington Management Foundation  
Kristina Wile  
Ellie and Mark Winthrop  
Natalie and Rod Wright  
Tricia and Tom Wynn  
Debbi and Michael Young

"It takes strength to realize that people do care about you. People do want to help you. So it does take strength to get whatever notions you have out of your head, and say... that I need help in this moment."

— John, Wily Scholar alum

Lisa and Dan Casey  
Ellen Pinkos Cobb\*  
Gabrielle and Richard Coffman  
Jodi and Daniel Cooper  
Kathy and Steve Cormier  
Kathleen Corscadden  
Diane Coulopoulos  
Molly and Rob Cramer  
Kathy and Bob Cunha  
Nancy and Mike Curry  
Helena D'Angelo  
DCU For Kids  
Geraldine Debray  
and Alfred Naddaff  
Joan DiGiovanni  
Divincenzo-McGowan Family  
Daniel Doherty  
Christopher Drouin  
Katherine and Robert Eyre  
Jayne Farley

Melanie Guerra  
Jessica and Elizabeth Guo  
Andrea and John Ham  
Frances Hamilton  
Sylvia Hammer  
Jessica and Brian Harrington  
Emily Hatch  
Gina and Dave Heaney  
Emily Helm  
Hope and David Hirsch  
Allison and Andrew Hirsch  
Lauren Hollender  
Ching-Yee Hu and Gary Orenstein  
Gita Iyer and Vijay Vishwanath  
Mary Lou and Bill Jackson  
Herb and Maxine Jacobs Foundation  
Chris Jenny  
Jennifer Johnson and Patrick Ryan  
Michael and Parrisa Julian\*  
Maria LaTour Kadison

\*Five years of consecutive giving

# Donors

## Giving Tuesday

Anonymous (1)  
 Holly Bernene  
 Daniel and Shimrit Black  
 Kathleen and Tim Culver  
 Geraldine Debriey  
 and Alfred Naddaff  
 Kathryn Dobrowski  
 Ann Gillespie and Bob Nuzzo  
 Anne Harvey Kilburn  
 Patrick Hayes  
 Dale and Ingrid Janes  
 Sarah Janes  
 Felicia Kiehm  
 Trisha Langkos  
 Anna Vouros and Curt Lefebvre  
 Madeline and Mark Lewis\*  
 Josie Linell  
 Annie O'Connor  
 Heidi and Lewis Pearlson  
 Janine and Bob Penfield  
 Maya Poorvu  
 Julie Price  
 John Ross  
 Andy Rudzinski and Stephanie  
 Boucher  
 Karen Salfity  
 Kathryn Sargent and Chris Wilson  
 Kris Schaefer and Lisa Chapnick  
 Legare Settle  
 Sam Shoolman  
 Diane Silverman  
 Hellie Swartwood  
 and Malcom Carley  
 Hector Vila  
 Faye Wilbur  
 Jonny and Natalie Yaollen

## 2nd Annual Speaker Series

Auli and Ken Batts  
 The Ilene Beal Charitable Foundation  
 Marcella and Pieter Boelhouwer  
 Sheila and Marc Boyle  
 Kathy Brennan and Gerald Cianciolo  
 Robin Cohen  
 Kathy and Steve Cormier  
 Susan and Bob Curtin  
 Cindy and Jim Duffy

Betsy and Rick Edie  
 Jennifer and Anthony Fortunato  
 Elise Gardner  
 Kelly and Michael Glew  
 Gita Iyer and Vijay Vishwanath  
 Mary Lou and Bill Jackson  
 Donna and Matthew Maley  
 Kathryn Maxwell  
 Bobby and Jeff Morgenstern  
 Laura and Matt Olton  
 Cheryl and Neal Oppen  
 Allison Provost  
 Carolyn and Sean Shaughnessy  
 Suzanne and David Wakefield  
 Janet Wertheimer

## Wily's Summer Read

Bryan Allard  
 Debbie and Don Aronson  
 Marcella and Pieter Boelhouwer  
 Ben Bramley  
 Andrew Bridson  
 Anne Cadigan and Mike Gaziano  
 Taylor Capuano and Craig Dwyer  
 Kathy and Steve Cormier  
 Kathy and Bob Cunha  
 Dana D'Orio  
 Kirsta and Chris Davey  
 Susan Dearborn  
 CC Donelan  
 Corrie Dretler  
 Catherine Elcik  
 Ruth Ferguson  
 Natalie Figueroa  
 Carol Fowler  
 Margaret Gerth  
 Liz and Art Greenwood  
 A Lee Hogewood III  
 Beth and John Howard  
 Maria LaTour Kadison  
 Lizanne Kenney  
 Jeffrey Kline  
 Cindy and Bob Laughrea  
 Anna Vouros and Curt Lefebvre  
 Deirdre and Darby Leid  
 Laura Lerner  
 Josephine Li-McLeod  
 Dana Lightsey  
 Therese Lockemy

"My favorite thing about Wily was definitely the people in the community. It was very nice to be around other students who I could relate to, even if our stories were very different, and also having adults who you don't have to explain yourself to, but get what you're about, and then who are there to offer support."

— Jilly, Wily Scholar alum



Eloise Mahoney  
 Sally McOsker  
 Nancy Mirken  
 Trevor Mullineaux  
 Allison Newman  
 Mariela Paez Vega  
 Sonal Pandya  
 Kim and Greg Pappas  
 Bernie Pekala  
 Andy and Danielle Perry  
 Pam Quinn  
 Gail and Jim Radley\*  
 Lynn Riley  
 Sue and Chuck Ross  
 Ana Sanchez  
 Jennifer Schoen and Janet Bagley\*  
 Janine Smith  
 Tanya and Jim Snyder  
 Harold Thomas  
 Amy and Dave Tormey

Suzanne and David Wakefield  
 Katharine Wallace  
 Ellie and Mark Winthrop  
 Natalie and Rod Wright  
 Debbi and Michael Young

## Wily Shines a Light on Gratitude

Anonymous (6)  
 AAFCPAs  
 Sam and Dave Adams  
 Kate Agarwal  
 Melissa Akopiantz  
 Whitney Allen  
 Carly Alperin  
 Robert Andrews  
 Hila and Zoltan Antal  
 Meryl and Mitchel Appelbaum  
 Katie Barnett



# With My Coach



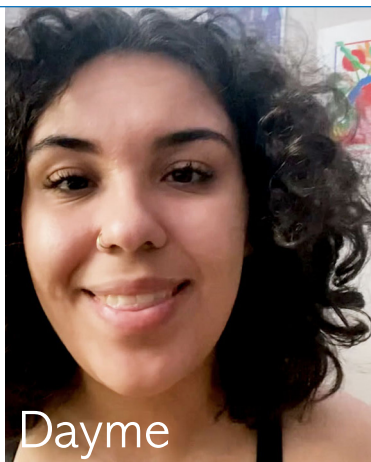
Chantel



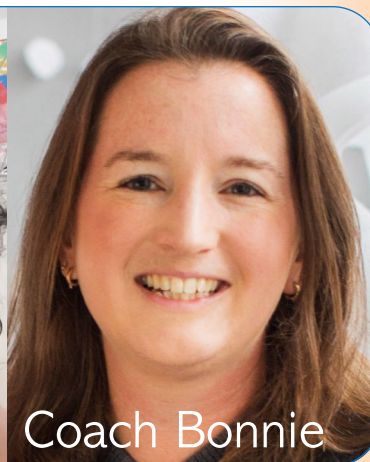
Coach Kat

Chantel, Wily Scholar alum, NEU '20 With my Wily coach, I celebrate the big wins and the small wins, whether it's academic, professional or personal. I know that she's always there.

Dayme, Wily Scholar MIT '21  
My coach helps me a lot with making sure that I'm staying on track with the different aspects of my life. So making sure that even when I'm really, really stressed with schoolwork, I'm not letting my personal care slip.



Dayme



Coach Bonnie

# Donors

## Wily Shines a Light on Gratitude (continued)

Arthur and Ann Barrett  
Amy and Alan Barry  
Corinne Basler  
Arghavan and Hussam Batal  
Auli and Ken Batts  
The Ilene Beal Charitable Foundation  
Katie and John Binda  
June and Michael Bramley  
Michael Bramley  
Kim Brettschneider  
Krista Bretz  
Anne Cadigan and Mike Gaziano  
Erin Callanan  
Katherine and Scott Cameron  
Katherine Cannan  
Alex and Antonella Casale  
Janet Caserio  
Eugenia Chang  
Jane and Anil Chitkara  
Elizabeth and Stephen Clarke  
Jodi and Daniel Cooper  
Mark Cordes  
Kathy and Steve Cormier  
Julia Cosentino  
Austin and Caroline Crouse  
Kathy and Bob Cunha  
Louise and Robert Cunha  
Maggie Cunha  
Katie Cutler  
Chris and Maribeth Dacey  
Kirsta and Chris Davey  
Laura De Veau  
Gregory and Caren Decter  
Joy and Mark Denomme  
Katherine DePasquale  
and Rodolfo Chaparro  
Caitlin and William DeVaul  
Mary Jane and Jim Devins  
Courtney Diamond  
Cristina and Fred Dominguez  
Karen Donoghue and Paul McGinn  
Nancy and Bill Doyle  
Eastern Bank  
Betsy and Rick Edie  
Susan and Peter Enyeart  
Mary Fitzpatrick  
Stephen and Lisa Foley

Freitas Liquors  
Jeffrey and Jennifer Gandel  
Amy Glass  
Beth Kressley Goldstein  
and Dennis Goldstein  
Lynne and Alexis Goltra  
Laura and Chip Goode  
Emmett Greenwood

Owen Greenwood  
Asheesh Gupta and Ellie Pierce  
Susan Hall  
Carol Hani and Ian Agranat  
Maureen and Rob Hayes  
Kelly Honohan  
Cathi Ianno  
Lydia and Dave Icke

Allyson Jaffe  
Ellen Janos  
Jennifer Johnson and Patrick Ryan  
Brent and Jane Johnstone  
Sarina and David Katz  
Waseem Kawaf  
Victoria and Tom Keiser

"I think Wily's response to the pandemic was really incredible for all of the Scholars who didn't have a place to go when their schools closed. They really have been a safety net that Wily Scholars often don't have with their families."

— Jilly, Wily Scholar alum





# With My Coach



Gordon



Gordon, Wily Scholar, BC '23 With my coach, I set my goals and track my progress towards achieving them.

Isiah, NEU '20 The first words my coach said to me as advice was to be kind to myself. And since knowing my coach, I have worked very hard to be much kinder to myself, and they have exposed to me, the wonderful human being that I didn't know I was.



# Donors

## Wily Shines a Light on Gratitude (continued)

Jen Kelly  
Nancy and Jon Kerbs  
Steven Khadavi  
Becky King  
Jeffrey Kline  
Liza and John Knapp  
Sarah and Laurence Knight  
Rachel and Bob Kramer  
Anslee Krouch  
Neal Lao and Haeny Yoon  
Kelley Laurel and Dan Brownell  
Susan Levine  
Ashley and John Linell  
Susie and Tony Lisa  
Rose and Bill Lovejoy  
Susan MacPherson  
and Carson Biederman  
Amy Madden

Raquel Majeski  
Chris and Libby Margraf  
Elise Matefy  
Coleen and Scott McAdam  
Elizabeth McQuillan  
Laura McTaggart and Tom Nolan  
Kate Mead  
Annie Montesano and Dan Scheibe  
Spencer Morgan  
Kristin and Stephen Mugford  
Luke Neumann  
Alyson Nickse  
Kathy and Karl Nordgren  
Sue Orenstein and Jay Leib  
Jennifer and Chris Pachus  
Debbie Lee Parmley  
Andrea and Dick Patton  
Bernie Pekala  
Kristi and Tod Perry  
Sharris Cail Perry and Steven Perry

Susan Petrlik  
Eliza and Sarah Petrow  
Alison Poorvu Jaffe and Daniel Jaffe  
Shannon Poulos  
Betsy and Mark Reale  
Judith and Jack Remondi  
Joyce Ripianzi  
Solomon Rosenberg  
Chris Royer  
Andres Saenz  
Heidi and Jason Saghir  
Matthew Scarafoni  
Kimberly Searfoorce  
Elizabeth Sells and Hans Carbonneau  
Pamela Shepley  
Sue Simon  
Lisa and Garz Soule  
Heather Stacchi  
Jill and Michael Stansky  
Ron Stoloff and Judi Seldin

Manoj Susarla  
Jeff and Shannon Taylor  
Neil Thompson  
Laurie Thomsen  
Genie and Will Thorndike  
Kim Thornton  
Amy and Dave Tormey  
Alexandra Turner  
MaryAnne and Steve Ulian  
Jenna and Matthew Vettel  
Janet and Keith Wade  
John and Kristine Wahr  
Suzanne and David Wakefield  
Edward and Bonnie Walker  
Elizabeth and Jaime Ward  
Sara Warwick  
Karen Willson and Alan Oslan  
Susie and Adam Winstanley  
Natalie and Rod Wright  
Frank and Jennifer Zecca



Wily Coaches and Staff getting ready to host Fall Community Day 2020 via Zoom.

# With My Coach



J'Saun Wily Scholar, BC '21 With my coach, I feel comfortable to be my authentic self. I have been able to open up with my coach more than I have with many other people. And that is because my coach is not just trying to do her job, but because she genuinely cares.



J'Saun



Coach Madjeen



Jordan



Coach Nikki

Jordan, Wily Scholar alum, Middlebury '20 With my Wily coach, I was able to plan my post-graduate studies and prepare myself for a life after college.



# Donors

## Intro to Wily Events

### Ella and Emilie Andrews' Fundraiser

Anonymous (1)  
Ella Andrews  
Emilie Andrews  
John Gifford  
Amy Pollack-Howard

### Georgina Arrieta-Ruetenik's Silent Auction

Georgina Arrieta-Ruetenik  
and Jim Ruetenik  
Alison and Peter Atallah  
Jane Brand  
Ana Maria Caballero McGuire  
and Kevin McGuire  
Maureen Callahan  
MarySue and Donald Cotton  
Maggie Curtis

Beth and John Gamel  
Debra and Robert Gelles  
Margaret Gerth  
Sisi Nyunt Goneconto  
and George Goneconto  
Maurice Handel  
Jeff Keselman  
Susan Kirk  
Cynthia Lemere  
Ashley and John Linell  
Heather Martin  
Kristin and Thomas Mollerus  
Judy Mouradian and Ted Ruetenik  
Jennifer Muroff  
Joanne Ochalla  
Richard Oppenheimer  
Marc Pagnier  
Heidi Ruetenik  
Ken Ruetenik

Danielle Sammut  
Amy Tercatin  
Sunu and Michael Yeh

### Sara Miller Blanc's Trivia Night

Anonymous (3)  
Kathy and Mark Alperin  
Taylor Babcock  
Ela Bajus  
Sara Miller Blanc and Jonathon Blanc\*  
Ilana Bornstein  
Katie Boyle  
Matt Ennis  
Kristi Faby  
Beth and David Franklin  
Emma Franklin  
Jake Franklin  
Yvette Gong  
Jana Harnitchek  
Stephen James  
Michael Katz  
Erica King  
Judi and Tim King\*  
Jenna Miller  
Spencer Morgan  
Kaitlin O'Donnell  
Ed Pearson  
Morgan Phillips  
Josh Waxman  
Jen Whitman  
Natalie and Jonny Yaollen

### Michael Julian's Birthday Fundraiser

Paul Braude  
Jeffrey Drummond  
Diana Erickson  
Carla Florencia  
Carol Fowler  
Todd Herrmann  
Betty Sabine  
Randy Stakeman  
Rhoda Underhill  
John White

### Debbi Young's Birthday Fundraiser

Anonymous (1)  
Jane Ayoub  
Sharmaine Braams  
Cathy DuBois  
Honey and Laurie Kepnes  
Madelyn Kinemond  
Lesley Muller  
Susan Petrlik  
Michelle Roccia  
Lynn Kratus Snoyer  
Jill Traister  
Elizabeth Weaver



On February 1, Georgina Arrieta-Ruetenik spearheaded a silent auction and fundraiser at SOMA physical therapy, raising over \$3,500 for Wily.

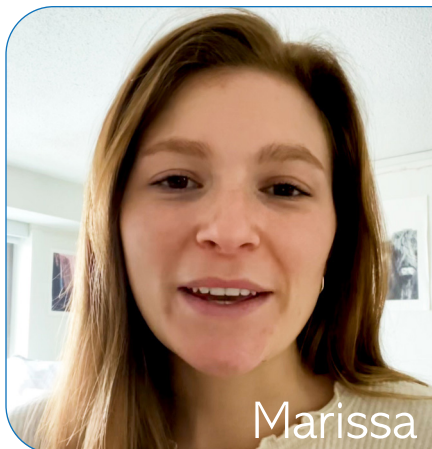
### Taylor Capuano's Birthday Fundraiser

Greg Berman  
Melissa Capuano  
Taylor Capuano  
and Craig Dwyer  
Erin Connelly  
Elizabeth Dobbs George  
Amanda Gross  
Lauren Richards  
Carly VanTassel  
Sarah Wheeler

"When I think of Wily, I think of people who advocate for me, and teach me how to advocate for myself."

— Jilly,  
Wily Scholar  
alum

# With My Coach

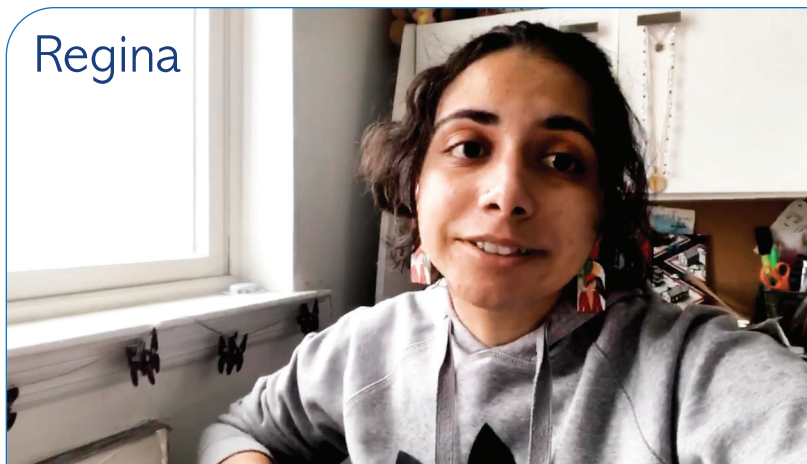


Marissa



Coach  
Madjeen

Marissa, Wily Scholar, BC '22 With my coach, I brainstormed organization and university resources that helped me in achieving my academic, personal and career-oriented goals that I had to set with her.



Regina



Coach Judi

Regina, Wily Scholar, Middlebury '22 I just want to say my experience with having a coach has been amazing. They're always encouraging me to do my best and lean into my passions.



# Donors

## Honor and Memory Gifts

DONOR	IN HONOR OF
Anonymous	Renee Levin
June and Michael Bramley	Katie Bramley
Anonymous	Debbi and Mike Young
Amy and Alan Barry	Judi Alperin King
Jennifer Braxton and Mary Gorman	“Congrats to the 2020 Wily Scholars and to Judi for the Cummings Grant!”
Helen Buck	Amy Tormey
Kathy and Bob Cunha	Patrick Dowling
Maggie Cunha	Professor Daniel Chambliss
Louise and Robert Cunha	Kathy Cunha
Karen and Jim Durham	Judi Alperin King
Phillip Graham	Kyla Truman
Liz and Art Greenwood	Katie and Don Bramley and Zach Martin
Emmett Greenwood	Liz Greenwood
Owen Greenwood	Liz Greenwood
Patrick Hayes	Gabe Benson
Herb and Maxine Jacobs Foundation	Chantel Riendeau
Mary Lou and Bill Jackson	Katie Bramley
Chris Jenny	Kim and Greg Pappas
Waseem Kawaf	Fawaz Kawaf
Jeff Keselman	Georgina Arrieta-Ruetenik and Jim Ruetenik
Steven Khadavi	Katherine DePasquale

DONOR	IN HONOR OF
Barbara and Tom Kohler	Bonnie Yezukevich
Trisha Langkos	Dick Orenstein
Cindy and Seth Lawry	Zach Martin
Elizabeth McQuillan	Wendy and Charles Leiserson
Meredith Mendelson	Judi Alperin King
Bobby and Jeff Morgenstern	Don Bramley
Hope and Steve Naples	Jennifer Schoen
Sarah Rahman	Gibran Ashai
Carol Reiling	Christina Breiter
Judith and Jack Remondi	Melissa and Allen Smith
Solomon Rosenberg	Michael Julian III
Sonia and Jason Silverman	Judi and Tim King
Sonia and Jason Silverman	Mr. & Mrs. Melvin and Patty Alperin
Sonia and Jason Silverman	The King family
Josef and Dana Volman	Kim Pappas
Suzanne and David Wakefield	Judi Rosensweig

DONOR	IN MEMORY OF
Jodi and Daniel Cooper	Ann Dynan
Deena and Robert Ferrara	Liz Beal
Jeffrey Kline	Ellen Kline
Selena Rogers	Minister Albert Olin Sr.
Karen Willson and Alan Oslan	Ellen Kline

## IN MEMORY OF SCOTT KING

Kathy and Mark Alperin

Laurie and Tony Amonte

Laura and Michael Arends

Maura and Thomas Bagley

Rev. Deacon Donald Battiston

Boston College Gators

Jennifer and Robert Bowman

Nevin and Kristine Chitkara

Kathleen and Daniel Chouinard

Mary Jane and Jim Devins

Betsy and Rick Edie

Erin and Mark Epker

Rita and Kevin Gill

Joanne and David Gooding

Kathleen and Matthew Kenney

Judi and Tim King

Christiane and Oliver Kuehberger

Kathryn and Gregory Lally

Ashley and John Linell

Kara and Jason McLoy

Allison and Erik Richman

Saint Dismas Prison Ministry Foundation

Melissa and Allen Smith

John Sulick

Thayer Academy Varsity Field Hockey Team

Kellie and David Zupkofska

## Corporations and Foundations

AAFCPAs

Amazon Smile

ASICS Digital

Bain Capital Children's Charity

Boston Resiliency Fund

Clipper Ship Foundation

Cummings Foundation

DCU For Kids

Eastern Bank

Freitas Liquors

Jason Hayes Foundation

J.E. & Z.B. Butler Foundation

Life Science Cares

Roy A. Hunt Foundation

Saint Dismas Prison Ministry Foundation

Serve Kindness

Sunovion Pharmaceuticals, Inc.

The Philanthropy Connection

The Rivers School

Wellington Management Foundation



**BOSTON  
RESILIENCY  
FUND**



**Clipper Ship Foundation**



**Cummings  
Foundation**



**LIFE SCIENCE CARES**

**WELLINGTON  
MANAGEMENT®**

## Matching Gifts

Anonymous (1)

AAFCPAs

Aetna Foundation, Inc.

Alexion

Bank of America

Battelle Memorial Institute

Berkshire Partners LLC

Boeing

Boston Scientific

Chevron

Cummings Properties LLC

Google

Healthgrades

Humana

Jones Lang Lasalle

United Health Group

Verisign

Wayfair

Wellington Management Company



*Thank you to Rockland Trust Bank for, once again, donating office space to Wily at the West Roxbury branch, in 2020.*

# In Kind Donors

Last March when colleges said “go home,” many Wily Scholars were left without a place to live, access to the means to earn money, and the items they needed to attend school. Thank you to our community partners, volunteers and pro bono providers for being there for Wily Scholars in 2020.

## Care Packages

### Valentine's Day

Jessica Cherry  
Marissa Crozier  
Nancy Doyle, *Chair*  
Audrey Gavin  
Melissa Lukowski  
Martha McNally  
Melissa Smith, *Chair*  
Thayer Academy

### COVID-19

Anonymous (1)  
Katie and Don Bramley, *Chairs*  
Deirdre Leid, *Chair*  
Darby Leid, *Chair*

### Spring Exams

Cindy and Jim Duffy, *Chairs*  
Caroline and David Ryan, *Chairs*  
St. Jean Family, *Chairs*

### Summer Break

Sally Abend  
Martha Blue



*The care package program continued despite the pandemic.*

Joan DiGiovanni  
CC Donelan, *Chair*  
Nicole Kelly  
Val Kolligian  
Sarah Lazarus  
Jane Nelson  
Mimi Deck Rutledge, *Chair*  
Dale Ryder  
Holly Salemy  
Patti Satterthwaite  
Patricia Waters

### Welcome Back

Kathy Alperin, *Chair*  
Anne Cadigan, *Chair*  
Rotary Club of Sharon, Inc.  
Tanya Snyder, *Chair*

### Halloween

Katie Leiserson, *Chair*  
Wendy and Charles Leiserson, *Chairs*  
Elizabeth McQuillan

### Winter Exams

Kate Ascione, *Chair*  
Belmont Hill School  
Katie Binda  
Paula Bogar  
Lisa Capone  
Kristine Chitkara  
Kit Cunningham, *Chair*  
Ellen Curran  
Joy Denomme, *Chair*  
Erin Epker, *Chair*  
Carolyn Glass  
Hilary Glynn  
Kristina Hatem  
Megan Holding  
Ann Hunnewell  
Jennifer Jordan  
Becky King

Annmari Landry  
Ashley Linell  
Karen McHaffie  
Sharisse Cail Perry, *Chair*  
Betsy Reale, *Chair*  
Wendy Scoppa, *Chair*  
Maryann Smith  
Sunovion Pharmaceuticals, Inc.  
The Rivers School  
Ellen Volpe, *Chair*  
Amy Warner

### Gift Giving

Laura Anderson  
Eileen Balicki  
Cheryl Boland  
Jen Boulay  
Stacy and Woody Bradford  
Trisha Bunce  
Jessica and Michael Butler  
Jen and Rich Carter  
Sheri Cohen  
Kate and Jack Conway  
Laurie Crist  
Mary Jane and Jim Devins  
CC Donelan  
Nancy and Bill Doyle  
Cindy and Jim Duffy  
Lisa Flathers  
Mary Gibbs and Brad Smith  
Linda and Mark Griffin  
Andrea and John Ham  
Geoff Harlan  
Cheryl and Steve Haynes  
Gina and Dave Heaney  
May and John Herr  
Heidi Hughey  
Kathy Keddie  
Anne and Mark Kelley  
Lizanne Kenney  
Liza and John Knapp  
Cindy and Bob Laughrea  
Kelley Laurel and Dan Brownell  
Christine and David Letts  
Sara and Ted Lyons  
Michelle and Neil MacLellan  
Amy Martin  
Kathleen McDougall  
and Douglas Lowe

Annie Montesano and Dan Scheibe  
Monique Nerrow  
Michele Norman and Steve Loose  
Kathy and Bill Parent  
Andrea and Dick Patton  
Rachel Rock and Josh Levy  
Judi and Bill Rosensweig  
Caroline and David Ryan  
Cris Santo and Joe Panepinto  
Aimee and Scott Sawyer  
Kate and Andrew Scammon  
Bonnie Sherman  
Melissa and Allen Smith  
Wendy and Aaron Smith  
Rachel Solomons  
St. Jean Family  
Peggy and Deon Stander  
Hilary and Langley Steinert  
Karen Sullivan  
Donna and Scott Swanson  
Elizabeth and Michael Taylor

*Hope and Comfort continued to provide hygiene products while Welcome Home helped to outfit donated apartments.*

Sonia and Zack Tsilis  
Leann and Brian Walsh  
Kathleen and Eric Wilbur  
Robin and Marc Wolpow  
Natalie and Rod Wright  
Tricia and Tom Wynn

### Gift Cards

Anonymous (3)  
Carol Berman  
Sara Miller Blanc  
and Jonathon Blanc  
Katie and Don Bramley  
James Carroll  
Austin and Caroline Crouse  
Samantha and Aaron Edelman  
Katrina Ellis  
Beth Emery  
Nicole Frahm  
Linda and Mark Griffin  
Tina Harford





*Thank you to **Boston BullPen Project** for helping two Scholars make it to graduation by providing funds to cover unanticipated college bills.*

Sarah Janes  
Lizanne Kenney  
Natalie Krause  
Josie Linell  
Isabelle and Ian Loring  
Sarah MacDonald  
Noelina Nakiguli  
Rob Perez  
Linda Rapciak  
Legare Settle  
Melissa and Allen Smith  
Liz Stanfield  
Elizabeth Stein  
The Amma School  
The Meadowbrook School  
Kyla Truman and Phillip Graham  
Carly VanTassel  
Mike and Deanna Virginio

## Goods

Caren Block  
Boston BullPen Project  
Melissa Chung  
City Realty  
*Stephen Whalen*

*Stephen Whalen of **City Realty** donated a Boston apartment for Wily Scholars during the pandemic.*

Steve Dickerman  
Tina Harford  
Hope & Comfort  
*Pat Flaherty*  
*Jesse Mattleman*  
Jacqueline Jones  
La Fabrica Central  
*Michelle Estades*  
Wendy and Charles Leiserson  
Renee Levin  
MassBio  
Janet and Peter Merrill  
Kim and Greg Pappas

Steve Pemberton  
Karl Reid  
Rockland Trust Bank  
Legare Settle  
Welcome Home  
*Julie Plaut Mahoney*

## Graduation

Karen Bates  
Sheila Boyle  
Katie Bramley  
Anne Elton  
Pamela Gildehaus  
Life is Good  
*Bert Jacobs*  
Annie Montesano, *Chair*  
Kathy Parent  
Virginia Shannon  
Peggy Stander  
Hilary Steinert, *Chair*  
Susie Winstanley

## Networkers

Nasiba Abdul-Karim  
Mamta Arora  
Kim Binaso  
Don Bramley  
Cristina Brennan  
Charmayne Brewster  
Taylor Capuano  
Aimee Cardwell  
Stavros Cholidis  
Mary Cockroft  
Austin Crouse  
Carole Dembek  
John Engelhart  
Kristi Faby  
Amy Gear  
Darren Harvey  
Caroline Himmelman  
Aaron Jones  
Chyreese Jones  
Maria LaTour Kadison  
Julie King  
John Leonard

Lorraine Levine  
Lauren Li  
Yu Liang  
Avianna McGrath  
Gary Orenstein  
Greg Pappas  
Kaushal Patel  
Paige Querol  
Kritika Ramani  
Katrin Schumann  
Legare Settle  
Ted Shin  
Pam Slatcher  
Sara Zwicker

## Professional Services

Martha Abdella  
*Abdella Design*  
*Alexandria Real Estate Equities, Inc.*  
Jay Bacrania  
*Signet Education, LLC*  
Daniel Black  
*Hencove Marketing*  
Robin Clebniak

*What a luxury for Wily Scholars to have access to free eye exams, glasses and contacts from **ProOptical** in Boston.*

*InternWorks*  
John Da Silva  
*Harvard School of Dental Medicine*  
Kristie Dean  
*The Soul Project*  
Tammy Dowley-Blackman  
Aram Elovic  
*Elovic Dental*  
Becky Pechenik Elovic  
*Elovic Dental*  
Ros Everdell  
SOAR  
Meryl Glassman  
Gillian Katz

*Having regular dental care is a critical part of your overall health. For the last four years, **Elovic Dental** has provided free dental care to Wily Scholars.*

*Real World Playbook*  
Jeffrey Kublin  
*ProOptical*  
Therese Lockemy  
Dan Muttly  
*Altum Marketing*

*Pro bono oral surgery provided by the **Harvard School of Dental Medicine** has meant Scholars can focus on their studies, pain and debt free.*

Nicole O'Connor and Eric Leone  
*Sevenpair Studios*  
Carmen Ortiz-McGhee  
Kathleen Parker  
*K & L Gates*  
Steve Pemberton  
Sydney Resendez  
Renee Rotman  
*New England OB-GYN*  
Cris Santo  
Kerrienne Sullivan  
*Hencove Marketing*  
Amy Tormey  
*Charleston Consulting Group*

## 2nd Annual Speaker Series: An Evening to Learn and Grow

### 2020 Sponsors

The Ilene Beal Charitable Foundation  
Lisa Bohné  
*Lavender Florist*  
Rob Burns  
*Night Shift Brewing*  
Kristie Dean  
*The Soul Project*  
James Morton  
*YMCA of Greater Boston*  
Monica Ordóñez  
*Jorge Ordóñez Selections*  
Wellesley College



# Volunteer

## How You Can Support Wily

Wily's strength comes from every member of the pack, including our many generous donors and volunteers. Whether you are a new friend, or looking for fresh ways to engage, we hope you'll consider these opportunities.

### Make a Tax-Deductible Donation

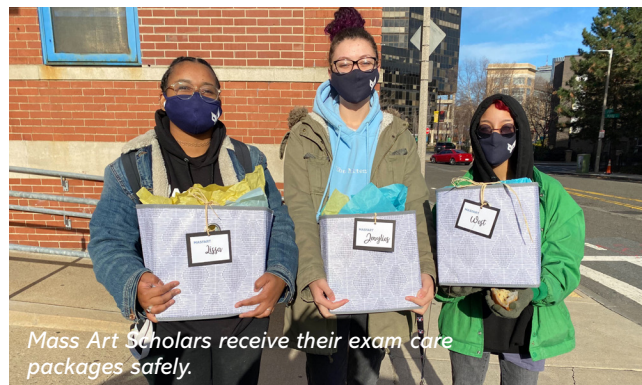
One of the most meaningful ways you can support Wily is through financial support. Contributions of every amount make a difference! Visit [thewilynnetwork.org/donate](http://thewilynnetwork.org/donate) to make a gift today. For information on gifts of stock or other securities, or to create a planned gift, please call 781-355-6527. Gifts in honor and in memory are welcomed.

### Create Care Packages for Scholars

Throughout the year, Wily volunteers create care packages for holidays, exam weeks and other occasions. These packages give Scholars a boost and remind them that we're rooting for them!

### Support Wily Career Networking

Share your knowledge and experience with Wily Scholars, and help them build a network for future success.



*Mass Art Scholars receive their exam care packages safely.*

### Gift Giving for Scholars

You can make a four-year commitment to provide gifts for a Scholar on significant occasions like birthdays and holidays. This is a great way to show your support for a Scholar throughout their college journey.

### Host or Attend a Wily Introduction

Learn more about Wily and support our work by hosting an intro event for friends, family or colleagues. Virtual events are a great option!

### Include Wily in Your Next Celebration

Invite friends and loved ones to support Wily in honor of your birthday, anniversary or other special occasion.



*Coordinators Gabe Benson and Laura Broffman prep goody bags for Scholars for Fall Community Day.*

### Support Scholars with a Gift Card

Gift cards are a welcome contribution any time of year and help Wily Scholars with food, school supplies and other necessities. Host a Gift Card Party, or send an individual gift card. Gift card suggestions: Amazon, CVS, Visa or Amex, Target, Uber or Lyft.

### NEW! The Wily Young Professionals Association (YPA)

Founded in 2020, the Wily YPA is a great place to meet and network with young professionals in the Wily community. YPA members use their time, talent, and resources to support and raise awareness of Wily's



mission, increase the organization's network and funding, and provide professional development opportunities for Scholars and YPA members. Visit [thewilynnetwork.org/young-professionals-association](https://thewilynnetwork.org/young-professionals-association) to learn more.

*For more information about any of these giving or volunteering opportunities, contact Ashley Linell, Director of Development at [ashley@thewilynnetwork.org](mailto:ashley@thewilynnetwork.org). We look forward to hearing from you!*

## wilyThanks

**Joy Denomme** — for her incredible leadership and support of our Care Package Program, including her work to gather and assemble 64 care packages delivered to Scholars at 9 different universities during their final exam weeks. We appreciate you, Joy!



**Linda Griffin** — a steadfast friend to Wily, who provided gifts for two Scholars this year, as well as holiday gift cards, and is a generous supporter of Wily's Fund-a-Scholar Program. Linda, thank you for being a light in the Wily community!

**Mike Julian** — board member, for his dedication to Wily Scholars. Mike helps Scholars develop their professional networking skills through LinkedIn info sessions and 1:1 career help. Mike, your ability to make connections contributed to a Wily alum securing employment!



### Lizanne Kenney

— whose many contributions include gift-giving for a new Scholar, holiday gift cards and creating personalized Valentine's Day packages for Scholars at Boston College. Lizanne, we are grateful to you!

**Renee Levin** — for years of generous support, including the creation of thoughtful care packages for Scholars who had to move due to the pandemic, and for serving on the host committee for our December 3rd celebration. We are fortunate to have you in the pack, Renee!



### Trish St. Jean

— for her commitment to Wily Scholars. In addition to being a gift-giver and care package chairperson, Trish is also a generous supporter of Wily's Fund-a-Scholar Program. Thank you for all that you do for the Wily Pack, Trish!



## Wily Shines a Light on Gratitude Singers

Our December virtual event was infused with musical performances from Charles Coxon, Jennifer Ese, Linnea Nordgren and Dan Costello, and Abigail vanLuling.




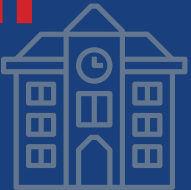











In a year of change and challenges, we found new strengths.

Your support made it possible.  
Thank you!



info@thewilynetwork.org  
781-355-6527  
thewilynetwork.org  
1920 Centre Street, Suite 1  
West Roxbury, MA 02132  
Follow Our Pack



 <p>Scholars <b>72</b></p>	<p>Colleges <b>11</b></p> 	 <p>Virtual coaching sessions <b>2,592</b></p>	<p>Stipends disbursed <b>1,584</b></p> 	<p>Graduates as of 2020 <b>20</b></p> 
<p>2020 Graduates <b>13</b></p> 	<p>Dining In with Wily <b>25</b></p> 	<p>Care packages distributed <b>323</b></p> 	 <p>Birthday and holiday gifts delivered <b>72</b></p>	<p>New Scholars accepted during the pandemic <b>34</b></p> 
<p>Gift cards donated <b>413</b></p> 	 <p><b>300</b> Wily masks distributed</p>	<p>Donors <b>627</b></p> 	 <p>Emergency grants and donations <b>306</b></p>	<p>Virtual community celebrations <b>6</b></p> 
 <p><b>8</b> Virtual events</p>	<p>Volunteers <b>203</b></p> 	<p><b>13</b> Staff</p>  <p>New staff <b>3</b></p>	<p><b>5</b> New driver's licenses supported</p> 